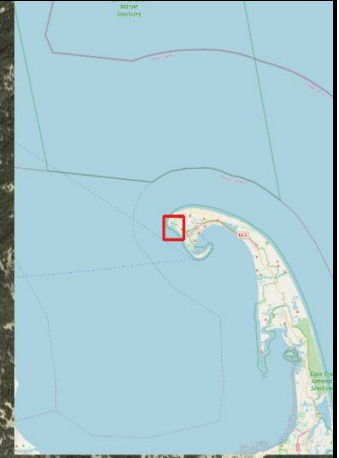


Tactics Legend

- DF** Deflection Booming
- DV** Diversion Booming
- EX** Exclusion Booming
- FO** Free Oil Recovery
- PR** Passive Recovery
- SR** Shoreside Recovery
- S** Staging Area
-  Boat Ramp
- BB** Beach Berm
- TG** Tide Gate
-  Protected-Water Boom
-  Open-Water Boom
-  Snare/ Sorbent Boom



Equipment - All Tactics

Boom(ft)	0
Marine anchors	0
Shore anchors	0
Sorbent Boom(ft)	0
FO Recovery Sys	1
Shore Responders	2
Boat Responders	2
Boats	2

Response Trailer, Tactics Deployment, and Responder Safety Information

A total of 1 state response trailers are required to implement all the tactics in this GRS.  
 Responders should always consider on-scene conditions before deploying GRP tactics.  
 Tactics may not be safe or effective under certain conditions.  
 Responder safety should always be the first priority.

Location



**Latitude:** 42°3'27" N  
**Longitude:** 70°14'9" W  
**NOAA Chart #** 13249-1

Version

2/22/2022

**Geographic Response Strategy**

**Hatches Harbor CI08**

Tactic #	Purpose	Response Equipment	Deployment Resources	Deployment Notes
<b>BB-01</b> 	Exclude spilled oil from impacting sensitive areas by constructing a barrier from natural materials	Build a beach berm. Use local beach and inter-tidal bar sediments. Do not destroy any part of foreshore. If berm is expected to remain in place for more than a few days, place one or more 20' x 12" pipe in the channel and build berm on top of pipe. Use culvert plugs to control water flow through the pipe. Permitting may be required.		Construction of beach berms typically require the use of heavy equipment and should only be attempted by professional responders. Beach berms should not be constructed without explicit direction from the Unified Command. Permits for earth-moving to construct beach berms are required from state and federal agencies (MADEP, Army Corp. of Eng) and concurrence from Natural Resource Trustee Agencies may also be
<b>FO-02</b> 	Contain and recover spilled oil on the water in the offshore & nearshore environment	1 or more onwater skimming systems		Deploy on-water recovery task force(s) in configuration suitable for types of vessels used and sea conditions, with skimming system(s) and temporary storage for recovered oil and water. Location not exact, will move to chase oil.

Local contacts

CCNS	<a href="tel:5083493785">(508) 349-3785</a>
Provincetown Fire	<a href="tel:5084877023">(508) 487-7023</a>
Provincetown Harbormaster	<a href="tel:5084877023">(508) 487-7023</a>
USFWS	<a href="tel:4135393194">(413) 539-3194</a>



*Hatches Harbor looking southeast*

Resources Protected

Marine Mammals	Seals
Fish	Shellfish, finfish
Invertebrates	<b>None identified</b>
Birds	Waterfowl concentration, Plovers (April 1-August 31)
Threat/End. Species	Piping Plovers (April 1 - August 31)
Cultural	<b>None identified</b>
Subsistence	<b>None identified</b>
Human Use	Commercial boat harbor, aquaculture, high-use recreation area
Commercial Fishing	<b>None identified</b>
Land Management	CCNS
Coastal Habitat	Marsh, sheltered tidal flats



*Hatches Harbor looking northeast*

Special Considerations & Navigational Hazards

Use caution in sandy dunes during months when plovers are present. Nesting areas may include beaches sand spits foredunes and washover areas in dunes. Consult with USFWS as early as possible regarding shoreline collection areas and access plans. Opening to Hatches Harbor constantly shifting. Beach Berm placement will vary based on shoreline contour and opening location at time of incident. Use extreme caution. Shoal waters with numerous reefs rocks & continually shifting sand bars. Currents and winds are locally variable and can create dangerous operating