

INCIDENT BRIEFING (ICS 201)

| | | |
|---|---|------------------------------|
| 1. Incident Name: 2025 Newbury/Newburyport/Salisbury GRS EX | 2. Incident Number: NNS-25 | 3. Date: 15MAY2025 |
|---|---|------------------------------|

4. Tactic Map/FR Deployment Drills

Deploy and test 900 ft DV01a-alt tactic as shown below.

MassDEP North Shore Geographic Response Strategy
Newburyport NS02A

Tactics Legend

- DF Deflection Booming
- DV Diversion Booming
- EX Exclusion Booming
- FO Free Oil Recovery
- PR Passive Recovery
- SR Shoreside Recovery
- S Staging Area
- BR Boat Ramp
- BB Beach Berm
- TG Tide Gate
- Protected-Water Boom
- Open-Water Boom
- Snare/ Sorbent Boom

Equipment - All Tactics

| | |
|------------------|------|
| Boom(ft) | 2400 |
| Marine anchors | 14 |
| Shore anchors | 4 |
| Sorbent Boom(ft) | 200 |
| FO Recovery Sys | 0 |
| Shore Responders | 2 |
| Boat Responders | 3 |
| Boats | 2 |

Version

2/15/2023

| Response Trailer, Tactics Deployment, and Responder Safety Information | Location |
|---|---|
| A total of 3 state response trailers are required to implement all the tactics in this GRS. Responders should always consider on-scene conditions before deploying GRP tactics. Tactics may not be safe or effective under certain conditions. Responder safety should always be the first priority. | Latitude: 42°48'56" N Longitude: 70°52'21" W NOAA Chart # 13282 |

5. Situation Summary and Health and Safety Briefing (for briefings or transfer of command):

An oil spill has occurred that threatens the **Merrimack River** and the adjacent shorelines. The **Newbury, Newburyport, and Salisbury** Fire Departments and Harbormasters will utilize various common Geographic Response Strategy (GRS) tactics to protect sensitive resources in **Merrimack River** and the surrounding area.

| | |
|--------------------------------|--|
| 6. Prepared by: MassDEP | Position/Title: Exercise Controller |
| ICS 201, Page 1 | Date/Time: 15MAY2025 |

INCIDENT BRIEFING (ICS 201)

| | | |
|---|--------------------------------------|------------------------------|
| 1. Incident Name: 2025 Newbury/Newburyport/Salisbury GRS EX | 2. Incident Number: NNS-25 | 3. Date: 15MAY2025 |
|---|--------------------------------------|------------------------------|

7. Current and Planned Objectives:

Program Objective: Demonstrate the ability of local first responders to conduct initial response activities within the first 4-6 hours of an oil spill incident by deploying MassDEP oil spill response equipment and implementing common Geographic Response Strategy (GRS) tactics.

Exercise Objective: Complete test of DV01a-alt tactic as outlined in Newburyport GRS (NS02A), ICS-201 Section 4 and Ops Brief.

| Tidal Information (approx.) for Newburyport, MA on 15MAY2025 | | | | | | | |
|--|-----|------|-----|------|-----|------|-----|
| HIGH | | | | LOW | | | |
| AM | ft | PM | ft | AM | ft | PM | ft |
| 1:39 | 8.5 | 2:15 | 7.3 | 8:07 | 0.4 | 8:10 | 1.5 |

| Wind Speed | Wind Direction | Wind Average | Air Temp | Sky Condition |
|------------|----------------|--------------|----------|---------------|
| 5-10 mph | E | 8 mph | 65 | Morning rain |

8. Current and Planned Actions, Strategies, and Tactics:

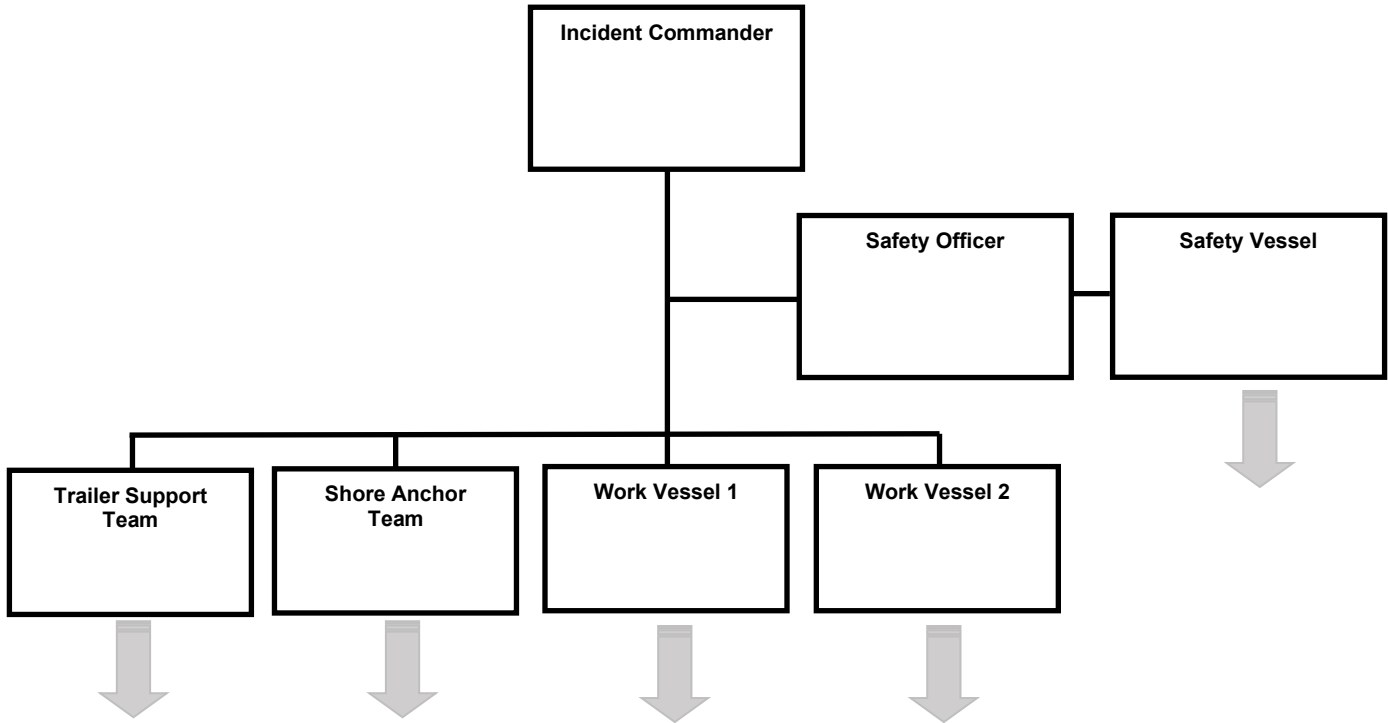
| Time: | Actions: |
|-------|---|
| 0930 | <u>All Personnel Mobilize and Stage Equipment:</u> North End Boat Club (282 Merrimac St, Newburyport) |
| 1000 | Intro, Sign-In, and Exercise Overview |
| 1015 | Classroom Session |
| 1115 | Trailer Equipment Familiarization and Hands-on Training |
| 1215 | LUNCH |
| 1245 | <u>All Personnel Transit to Deployment Staging Location:</u> Cashman Park Public Boat Launch (Sally Snyder Way, Newburyport) |
| 1300 | Final Safety and Operational Brief |
| 1315 | Initiate Test of DV01a-alt Tactic |
| 1445 | Demobilize, Rinse, Repack Equipment |
| 1515 | Conduct Hot Wash |
| 1530 | Secure from Exercise |
| | |
| | |

| | |
|-----------------------------|--|
| Prepared by: MassDEP | Position/Title: Exercise Controller |
| ICS 201, Page 2 | Date/Time: 15MAY2025 |

INCIDENT BRIEFING (ICS 201)

| | | |
|--|-------------------------------|-----------------------|
| 1. Incident Name: 2025 Newbury/Newburyport/Salisbury GRS EX | 2. Incident Number: NNS-25 | 3. Date: 15MAY2025 |
|--|-------------------------------|-----------------------|

9. Current Organization (fill in additional organization as appropriate):



| | |
|-------------------------|-------------------------------------|
| 6. Prepared by: MassDEP | Position/Title: Exercise Controller |
| ICS 201, Page 3 | Date/Time: 15MAY2025 |

INCIDENT BRIEFING (ICS 201)

| 1. Incident Name: 2025 Newbury/Newburyport/Salisbury GRS EX | 2. Incident Number: NNS-25 | 3. Date: 15MAY2025 |
|---|--------------------------------------|--|
| 10. Resource Summary: | | |
| Resource: | Resource Identifier: | Notes (location/assignment/status): |
| Newbury FD | Personnel | 2-3 |
| Newbury PD/HM | Personnel | 1 |
| Newburyport FD | Personnel | 14 (7 on duty crew) |
| Newburyport HM | Personnel | 5 |
| Salisbury FD | Personnel | 6-8 |
| Salisbury HM | Personnel | 1 |
| USCG | Personnel | TBD |
| EPA | Personnel | 1 (Observer) |
| MassDEP/MassDEP NERO | Personnel | 2-4 |
| Nuka Research | Personnel | 2 |
| MER | Personnel | 3 |
| 25 ft Safeboat (x2) | Vessel (x2) | Newburyport HM |
| 29 ft Safeboat | Vessel | Newburyport FD |
| 25 ft Safeboat | Vessel | Salisbury FD |
| Boom Rinse | Support | North End Boat Club / Newburyport FD Truck |
| Radios | Support | Channel TBD |
| Drone Team (2 pilots/2 drones) | Support | Salisbury FD |
| MassDEP Trailer – Salisbury | Response Equipment | TBD |
| MassDEP Trailer – Newburyport | Response Equipment | TBD |
| 6. Prepared by: MassDEP | | Position/Title: Exercise Controller |
| ICS 201, Page 4 | | Date/Time: 15MAY2025 |

SAFETY MESSAGE/PLAN (ICS 208)

KNOWN SAFETY HAZARDS:

- **Lines under tension** Boom towing and shoreside anchoring.
- **Pinch points** Connecting boom, boom towing, vessel operations.
- **Heavy lifting** Boom and anchors - observe safe lifting practices.
- **Entanglement** - Working around lines, anchors, and boom during shoreside and on-water deployment operations. Do not stand in the bight of lines or where boom is flaked out for deployment.
- **Loose clothing and jewelry** - Refrain from wearing loose clothing that may snag or become entangled on equipment. Jewelry including necklaces and rings should be removed.
- **Slips, trips, and falls** - Exercise caution in wet, muddy, and rocky areas and when working on piers, docks, or boat ramps near water. When working in, on, or near equipment trailers during boom retrieval and deployment, special precautions must be taken to avoid injury. For example, caution tape (provided in each trailer) should be tied to trailer ramp cables to mark their location.
- **Crushing injuries** - Exercise caution when working with anchors, while driving shoreside stakes with sledge or slide hammers, and when working alongside other vessels to avoid crushing injuries.
- **Vessel Operations** - Exercise caution when working near other vessels in boom deployment, towing, and rigging operations. Use caution when working near outboard motors and propellers.
- **Flotsam and debris** - Exercise Safety Officers shall conduct shoreside walkdowns to identify and remove dangerous objects (glass, sharp materials, or debris washed up on shore) that may endanger participants and/or impede exercise activities. Medical waste should only be retrieved by on-scene medical personnel. Flotsam should only be removed if it can be done safely and only if it impedes exercise activities.
- **Hypothermia** - Dependent on water temperature. If a participant is immersed in water, extricate safely and quickly, and treat them as appropriate.
- **Heat Stress/Stroke** - Dependent upon air temperature and humidity. Exposure may put participants at risk for heat stress, which can result in heat stroke, heat exhaustion, heat cramps, or rashes. Participants exhibiting heat stress symptoms must be treated immediately.

SPECIFIC PRECAUTIONS:

- An Exercise Safety Officer will be identified and responsible for all participant safety.
- First-Aid equipment should be made available. EMTs/Paramedics will be available on-scene.
- Personal Flotation Devices (PFDs) are required for all vessel crews and all shoreside personnel working along shorelines, boat ramps, and piers.
- All working personnel shall wear the appropriate foot gear during operations (waders, steel-toe boots)
- Sufficient personnel shall engage in loading and unloading boom from trailers to prevent injury.
- Hearing protection should be worn when working around generators and air compressors.
- Vessel operators shall conduct a safety brief with passengers to review vessel-specific safety precautions.
- An on-vessel spotter shall be assigned to provide guidance to the vessel operator.
- Utilize fenders when mooring alongside piers/docks and when rafting with other vessels.
- Person overboard - vessel spotter must maintain constant visual contact with the person overboard and provide position and direction assistance to the vessel operator. "Emergency" phrases must be communicated to all exercise participants via radio. Incident Commander will halt all exercise activity.
- Vessel load balancing - Each vessel operator must ensure that personnel and equipment are stationed and distributed appropriately on deck.
- Vessel occupancy – Vessel operators must adhere to the vessel's occupancy limits to avoid overloading.
- Hydration – Participants should ensure they remain properly hydrated throughout the exercise, especially in extreme heat situations. Water will be provided.
- Sunscreen – Participants should ensure proper sunscreen application based on weather conditions.

3. Prepared by: MassDEP

Position/Title: Exercise Controller

ICS 208, Page 1

Date: 15MAY2025