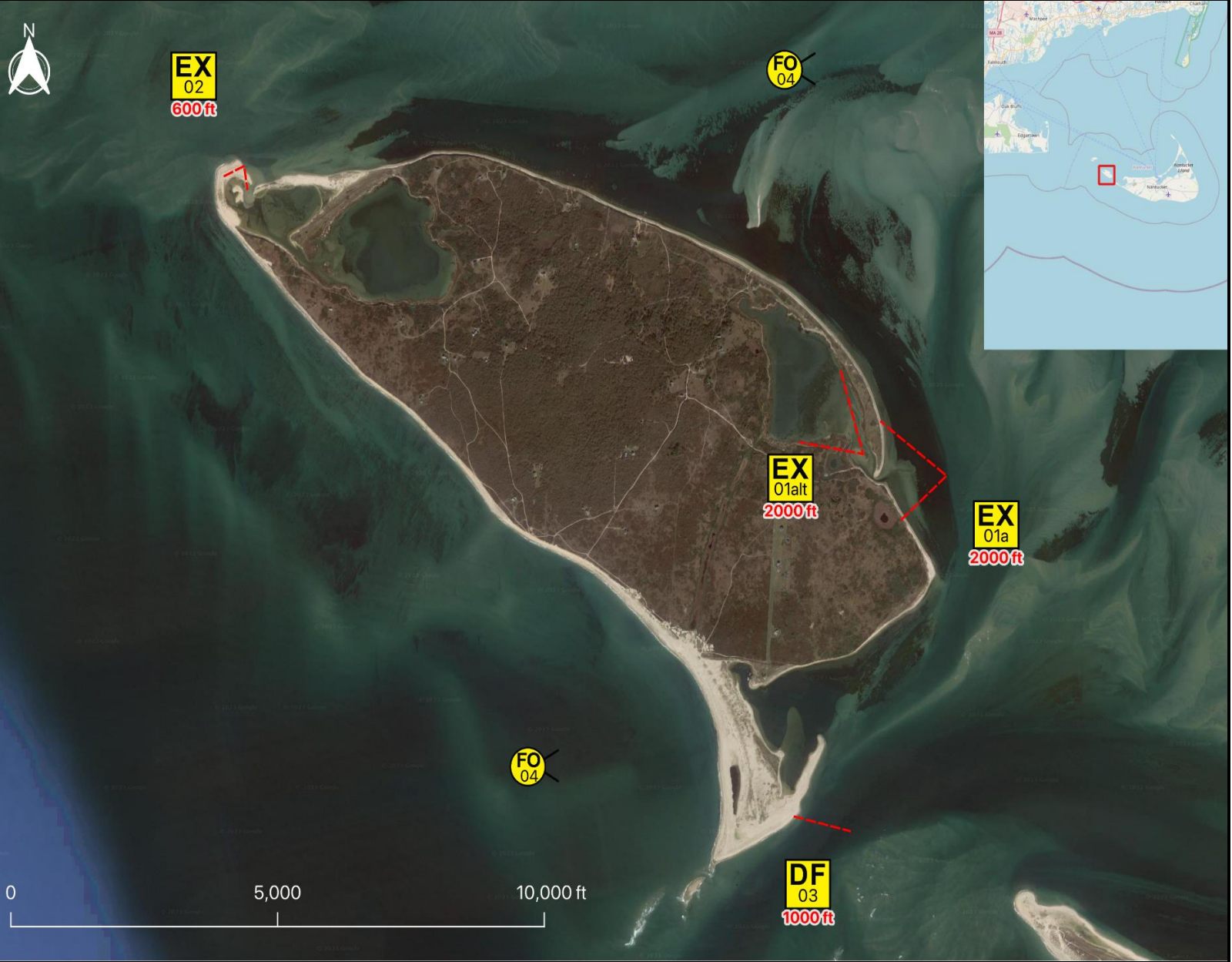


Tactics Legend

- DF** Deflection Booming
- DV** Diversion Booming
- EX** Exclusion Booming
- FO** Free Oil Recovery
- PR** Passive Recovery
- SR** Shoreside Recovery
- S** Staging Area
-  Boat Ramp
- BB** Beach Berm
- TG** Tide Gate
-  Protected-Water Boom
-  Open-Water Boom
-  Snare/ Sorbent Boom



Equipment - All Tactics

Boom(ft)	5600
Marine anchors	28
Shore anchors	7
Sorbent Boom(ft)	0
FO Recovery Sys	2
Shore Responders	2
Boat Responders	9
Boats	3

Version
2/16/2023

Response Trailer, Tactics Deployment, and Responder Safety Information







A total of 6 state response trailers are required to implement all the tactics in this GRS. Responders should always consider on-scene conditions before deploying GRP tactics. Tactics may not be safe or effective under certain conditions. Responder safety should always be the first priority.

Location

Latitude: 41°18'3" N
Longitude: 70°15'31" W
NOAA Chart # 13241-1

Geographic Response Strategy

Tuckernuck Island CI26

Tactic #	Purpose	Response Equipment	Deployment Resources	Deployment Notes
EX-01a 	Prohibit oil slicks from entering a sensitive area	2000 ft protected water boom 10 marine anchor system 2 shoreline anchor system	2 shore responders 2 response boats 6 boat responders	Tend through tidal changes. Deploy boom as depicted to exclude oil from sensitive areas. Anchor every 200-300'. Not tide dependent. Deploy shoreside anchor first. Readjust boom angle as needed to reduce entrainment
			Testing Date	
EX-01alt 	Prohibit oil slicks from entering a sensitive area	2000 ft protected water boom 10 marine anchor system 2 shoreline anchor system	2 shore responders 2 response boats 6 boat responders	Tend through tidal changes. Deploy boom as depicted to exclude oil from sensitive areas. Anchor every 200-300'. Not tide dependent. Deploy shoreside anchor first. Readjust boom angle as needed to reduce entrainment
			Testing Date	
EX-02 	Prohibit oil slicks from entering a sensitive area	600 ft protected water boom 3 marine anchor system 2 shoreline anchor system	2 shore responders 1 response boats 3 boat responders	Tend through tidal changes. Deploy boom as depicted to exclude oil from sensitive areas. Anchor every 200-300'. Not tide dependent. Deploy shoreside anchor first. Readjust boom angle as needed to reduce entrainment
			Testing Date	
DF-03 	Direct spilled oil away from a location to be protected or to change the course of the slick.	1000 ft protected water boom 5 marine anchor system 1 shoreline anchor system	2 shore responders 2 response boats 6 boat responders	Tend through tidal changes. Deploy boom as depicted to deflect incoming oil away from sensitive areas. Anchor every 200-300'. Deploy shoreside anchor first.
			Testing Date	
FO-04 	Contain and recover spilled oil on the water in the offshore & nearshore environment	1 or more onwater skimming systems		Deploy on-water recovery task force(s) in configuration suitable for types of vessels used and sea conditions, with skimming system(s) and temporary storage for recovered oil and water. Location not exact, will move to chase oil.
		N/A	Testing Date	
FO-04 	Contain and recover spilled oil on the water in the offshore & nearshore environment	1 or more onwater skimming systems		Deploy on-water recovery task force(s) in configuration suitable for types of vessels used and sea conditions, with skimming system(s) and temporary storage for recovered oil and water. Location not exact, will move to chase oil.
		N/A	Testing Date	

Local contacts

Nantucket-Fire	(508) 228-2324
Nantucket-Harbormaster	(508) 228 7261
Nantucket Soundkeeper	(508) 775-9767
Madaket Harbormaster	(508) 958 1577
USFWS	(413) 539-3194



East Pond looking northeast

Resources Protected

Marine Mammals	Seals
Fish	Shellfish, finfish
Invertebrates	None identified
Birds	Waterfowl concentration, Seabirds, shorebirds
Threat/End. Species	Piping Plovers (April 1- August 31), Roseate Terns (foraging mid-July thru Sept 30)
Cultural	None identified
Subsistence	None identified
Human Use	High-use recreational area
Commercial Fishing	None identified
Land Management	None identified
Coastal Habitat	Marsh, sheltered tidal flats, barrier beach



North Pond looking northeast

Special Considerations & Navigational Hazards

Use caution in sandy dunes during months when plovers are present. Use caution operating in nearshore areas when Roseate Terns are foraging. Nesting areas may include beaches, sandspits, foredunes, & washover areas in dunes. Consult with USFWS as early as possible regarding shoreline collection areas and access plans. Use extreme caution. Shoal waters with numerous reefs rocks & continually shifting sand bars. Currents and winds are locally variable and can create dangerous operating environments. Vessel operators should have local knowledge.