

Tactics Legend

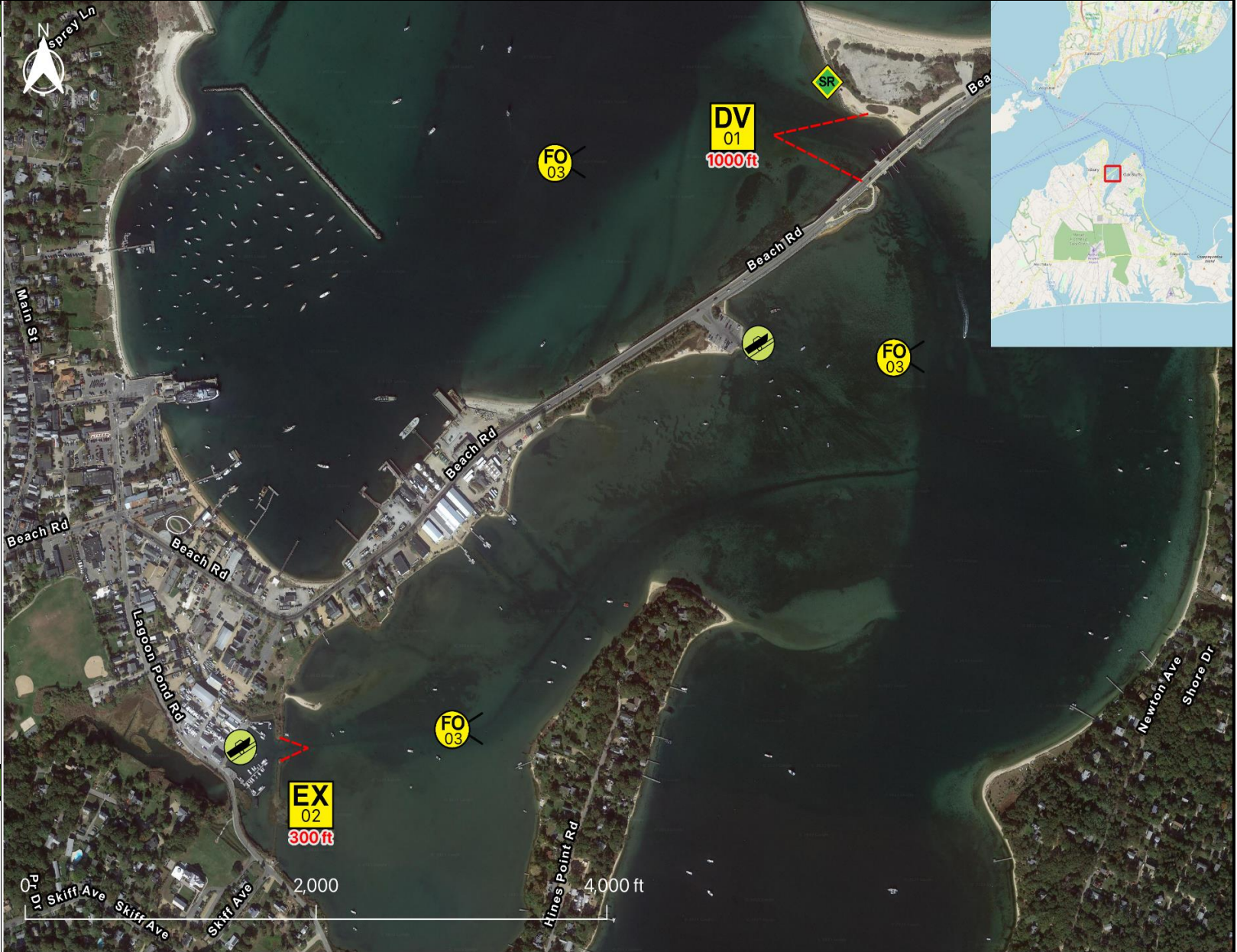
- DF** Deflection Booming
- DV** Diversion Booming
- EX** Exclusion Booming
- FO** Free Oil Recovery
- PR** Passive Recovery
- SR** Shoreside Recovery
- S** Staging Area
-  Boat Ramp
- BB** Beach Berm
- TG** Tide Gate
-  Protected-Water Boom
-  Open-Water Boom
-  Snare/ Sorbent Boom

Equipment - All Tactics

| | |
|------------------|------|
| Boom(ft) | 1300 |
| Marine anchors | 7 |
| Shore anchors | 4 |
| Sorbent Boom(ft) | 0 |
| FO Recovery Sys | 3 |
| Shore Responders | 2 |
| Boat Responders | 6 |
| Boats | 2 |

Version

2/16/2023



Response Trailer, Tactics Deployment, and Responder Safety Information







A total of 2 state response trailers are required to implement all the tactics in this GRS.
 Responders should always consider on-scene conditions before deploying GRP tactics.
 Tactics may not be safe or effective under certain conditions.
 Responder safety should always be the first priority.

Location

Latitude: 41°27'16" N
Longitude: 70°35'31" W
NOAA Chart # 13238-1

Geographic Response Strategy

Vineyard Haven Harbor CI19

| Tactic # | Purpose | Response Equipment | Deployment Resources | Deployment Notes |
|--|--|---|---|---|
| DV-01  | Redirect spilled oil from one location or direction of travel to a specific site for recovery. | 1000 ft protected water boom 5 marine anchor system 2 shoreline anchor system | 2 shore responders 2 response boats 6 boat responders | Tend through tidal changes. Deploy boom as depicted to divert incoming oil to the collection site. Anchor every 200-300'. Adjust angle as necessary to reduce entrainment. Set up shoreside recovery and tend throughout tide. Deploy shoreside anchor first. |
| | | 5/28/2009 Testing Date | Y Tested | |
| EX-02  | Prohibit oil slicks from entering a sensitive area | 300 ft protected water boom 2 marine anchor system 2 shoreline anchor system | 2 shore responders 1 response boats 3 boat responders | Tend through tidal changes. Deploy boom as depicted to exclude oil from sensitive areas. Anchor every 200-300'. Not tide dependent. Deploy shoreside anchor first. Readjust boom angle as needed to reduce entrainment |
| | | Testing Date | N Tested | |
| FO-03  | Contain and recover spilled oil on the water in the offshore & nearshore environment | 1 or more onwater skimming systems | | Deploy on-water recovery task force(s) in configuration suitable for types of vessels used and sea conditions, with skimming system(s) and temporary storage for recovered oil and water. Location not exact, will move to chase oil. |
| | | N/A Testing Date | Tested | |
| FO-03  | Contain and recover spilled oil on the water in the offshore & nearshore environment | 1 or more onwater skimming systems | | Deploy on-water recovery task force(s) in configuration suitable for types of vessels used and sea conditions, with skimming system(s) and temporary storage for recovered oil and water. Location not exact, will move to chase oil. |
| | | N/A Testing Date | Tested | |
| FO-03  | Contain and recover spilled oil on the water in the offshore & nearshore environment | 1 or more onwater skimming systems | | Deploy on-water recovery task force(s) in configuration suitable for types of vessels used and sea conditions, with skimming system(s) and temporary storage for recovered oil and water. Location not exact, will move to chase oil. |
| | | N/A Testing Date | Tested | |
| SR-04  | Remove spilled oil that has been diverted to a designated recovery site accessible from shore | 1 skimming system 1 storage tank or bladder 1 hoses, pumps, fittings | 2 shore responders | Set up shoreside recovery tactic at general location depicted on map. Some access points located at private residences. Access may be difficult. |
| | | N/A Testing Date | Tested | |

Local contacts

| | |
|---|---|
| Martha's Vineyard Comm. Ctr. 24-hr | (508) 693-1212 |
| Tisbury- Harbormaster | (508) 696 4249 |
| Tisbury-Fire | (508) 696-4246 |
| Tisbury-Shellfish | (508) 696 4201 |
| Martha's Vineyard Commission | (508) 693-3453 |
| Oak Bluffs-Fire Chief | (508) 693-0077 |
| Oak Bluffs-Shellfish Dept | (508) 693-0072 |
| Oaks Bluffs Harbormaster/Marina Manager | (508) 693-4355 |
| Nantucket Soundkeeper | (508) 775-9767 |
| USFWS | (413) 539-3194 |



Vineyard Haven Harbor and Lagoon Pond looking southeast

Resources Protected

| | |
|---------------------|---|
| Marine Mammals | Seals |
| Fish | Shellfish, finfish |
| Invertebrates | None identified |
| Birds | Waterfowl concentration |
| Threat/End. Species | Roseate Terns (foraging mid-July thru Sept 30) |
| Cultural | None identified |
| Subsistence | None identified |
| Human Use | Commercial boat harbor, aquaculture, high-use recreational area |
| Commercial Fishing | None identified |
| Land Management | None identified |
| Coastal Habitat | Marsh, sheltered tidal flats |



Site of DV-01, Lagoon Pond entrance looking north

Special Considerations & Navigational Hazards

Use caution in sandy dunes during months when plovers are present. Use caution operating in nearshore areas when Roseate Terns are foraging. Nesting areas may include beaches, sandspits, foredunes, & washover areas in dunes. Consult with USFWS as early as possible regarding shoreline collection areas and access plans. Use extreme caution. Shoal waters with numerous reefs rocks & continually shifting sand bars. Currents and winds are locally variable and can create dangerous operating environments. Vessel operators should have local knowledge.