

Tactics Legend

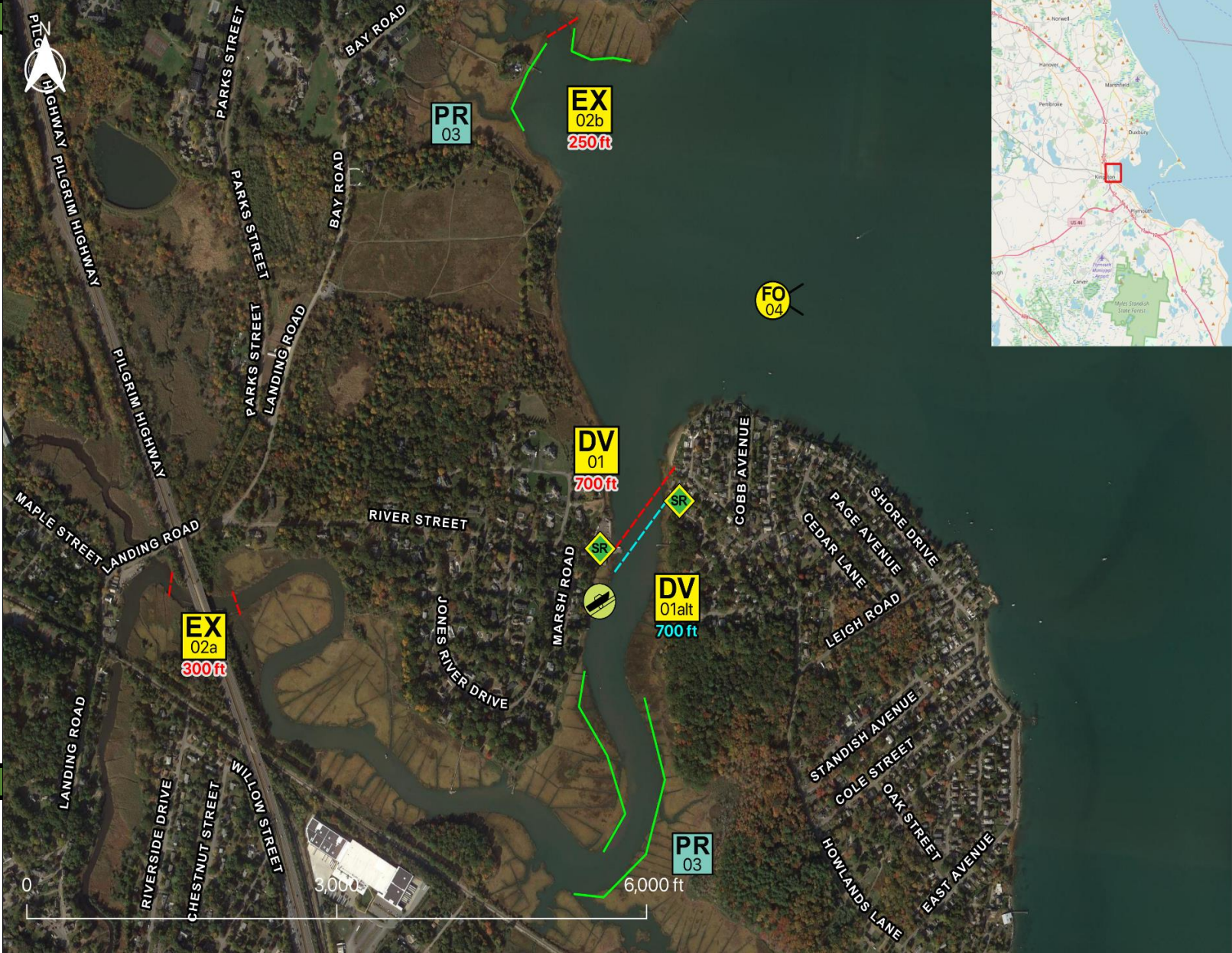
- DF** Deflection Booming
- DV** Diversion Booming
- EX** Exclusion Booming
- FO** Free Oil Recovery
- PR** Passive Recovery
- SR** Shoreside Recovery
- S** Staging Area
-  Boat Ramp
- BB** Beach Berm
- TG** Tide Gate
-  Protected-Water Boom
-  Open-Water Boom
-  Snare/ Sorbent Boom

Equipment - All Tactics

Boom(ft)	1950
Marine anchors	11
Shore anchors	8
Sorbent Boom(ft)	4200
FO Recovery Sys	1
Shore Responders	2
Boat Responders	3
Boats	2

Version

2/22/2022



Response Trailer, Tactics Deployment, and Responder Safety Information









A total of 2 state response trailers are required to implement all the tactics in this GRS. Responders should always consider on-scene conditions before deploying GRP tactics. Tactics may not be safe or effective under certain conditions. Responder safety should always be the first priority.

Location

Latitude: 41°59'57" N
Longitude: 70°42'42" W
NOAA Chart # 13253

Geographic Response Strategy

Kingston SS11

Tactic #	Purpose	Response Equipment	Deployment Resources	Deployment Notes
DV-01 	Redirect spilled oil from one location or direction of travel to a specific site for recovery.	700 ft protected water boom 4 marine anchor system 4 shoreline anchor system	2 shore responders 1 response boats 3 boat responders	Tend through tidal changes. Deploy boom as depicted to divert incoming oil to the collection site. Anchor every 200-300'. Adjust angle as necessary to reduce entrainment. Set up shoreside recovery and tend throughout tide. Deploy shoreside anchor first.
		9/16/2015	Testing Date	
DV-01alt 	Redirect spilled oil from one location or direction of travel to a specific site for recovery.	700 ft protected water boom 4 marine anchor system 4 shoreline anchor system	2 shore responders 1 response boats 3 boat responders	Tend through tidal changes. Deploy boom as depicted to divert incoming oil to the collection site. Anchor every 200-300'. Adjust angle as necessary to reduce entrainment. Set up shoreside recovery and tend throughout tide. Deploy shoreside anchor first. Alternate deployment with tide - reset during slack.
		9/16/2015	Testing Date	
EX-02a 	Prohibit oil slicks from entering a sensitive area	300 ft protected water boom 2 marine anchor system 4 shoreline anchor system	2 shore responders 1 response boats 3 boat responders	Tend through tidal changes. Deploy boom as depicted to exclude oil from sensitive areas. Anchor every 200-300'. Not tide dependent Deploy shoreside anchor first.
			Testing Date	
EX-02b 	Prohibit oil slicks from entering a sensitive area	250 ft protected water boom 1 marine anchor system 4 shoreline anchor system	2 shore responders 1 response boats 3 boat responders	Tend through tidal changes. Deploy boom as depicted to exclude oil from sensitive areas. Anchor every 200-300'. Not tide dependent Deploy shoreside anchor first.
			Testing Date	
PR-03 	Remove spilled oil by collecting it in a sorbent material	3000 ft sorbent boom 3000 ft sorbent pom-poms 86 anchor stakes	2 shore responders	Place and stake snare or sorbent boom in areas that are likely to pool and collect oil and across the mouths of the streams and intertidal areas. Use snare boom for persistent oils and sorbent boom for non-persistent oils. Approach the streams and intertidal areas on rising tide. Replace as necessary to maximize oil recovery.
		N/A	Testing Date	
PR-03 	Remove spilled oil by collecting it in a sorbent material	1200 ft sorbent boom 1200 ft sorbent pom-poms 34 anchor stakes	2 shore responders	Place and stake snare or sorbent boom in areas that are likely to pool and collect oil and across the mouths of the streams and intertidal areas. Use snare boom for persistent oils and sorbent boom for non-persistent oils. Approach the streams and intertidal areas on rising tide. Replace as necessary to maximize oil recovery.
		N/A	Testing Date	
FO-04 	Contain and recover spilled oil on the water in the offshore & nearshore environment	1 or more onwater skimming systems		Deploy on-water recovery task force(s) in configuration suitable for types of vessels used and sea conditions, with skimming system(s) and temporary storage for recovered oil and water. Location not exact, will move to chase oil.
		N/A	Testing Date	
SR-05 	Remove spilled oil that has been diverted to a designated recovery site accessible from shore	2 skimming system 2 storage tank or bladder 2 hoses, pumps, fittings	2 shore responders	Set up shoreside recovery tactic at general location depicted on map. Some access points located at private residences. Access may be difficult
		N/A	Testing Date	

Local contacts

Kingston Conservation Commission	781-585-0537
Kingston Dept of Emergency Management	781-585-3135
Kingston Fire Dept	781-585-0532
Kingston Harbormaster & Shellfish Constable	781-585-0519
Mass. Dept of Environmental Protection (24 Hours)	888-304-1133
U.S. Coast Guard (24 Hours)	617-223-5750



View looking east towards Hwy 3 bridge. (EX-02a)

Resources Protected

Marine Mammals	None identified
Fish	Anadromous Fish, Finfish
Invertebrates	Lobster, crab, shrimp, shellfish
Birds	Seabirds
Threat/End. Species	None identified
Cultural	None identified
Subsistence	None identified
Human Use	Boat Ramp, Commercial Fishing, Marina, Recreational Fishing
Commercial Fishing	None identified
Land Management	State Management Area
Coastal Habitat	Beach, Marsh, Rocky, Riprap, Tidal Flats



View looking west towards the boat ramp at the end of River Street and the location of DV-01

Special Considerations & Navigational Hazards

Aquaculture plots located in the area of DV01. Spills may originate from Rt 3 bridge. Vessel operators should have local knowledge.