

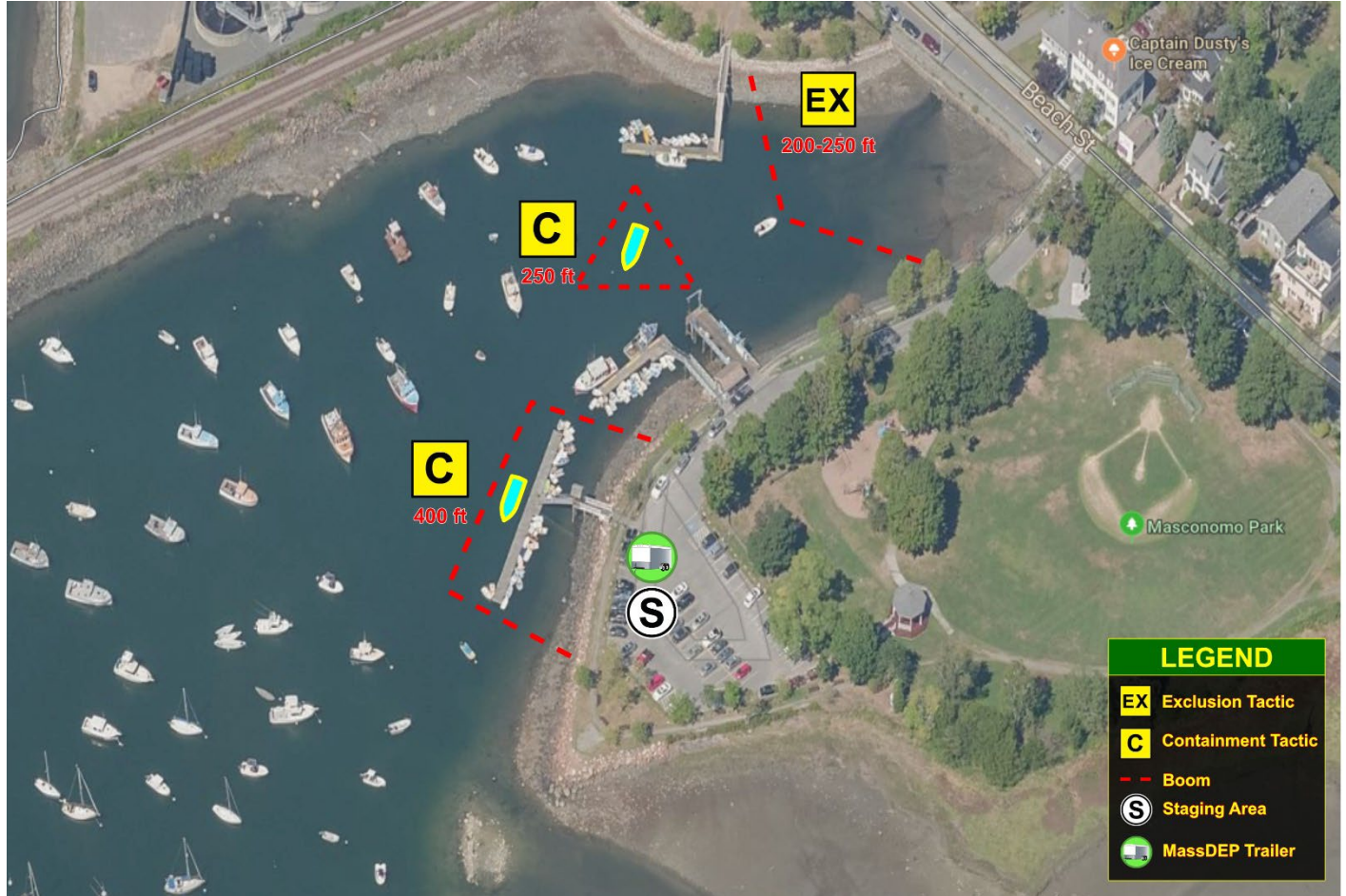
INCIDENT BRIEFING (ICS 201)

1. Incident Name: 2024 Manch/Glouc/Rckpt GRS EX

2. Incident Number: 99-24

3. Date: 10APR24

4. Tactic Map/FR Deployment Drills



5. Situation Summary and Health and Safety Briefing (for briefings or transfer of command): Recognize potential incident Health and Safety Hazards and develop necessary measures (remove hazard, provide personal protective equipment, warn people of the hazard) to protect responders from those hazards.

An oil spill has occurred that threatens **Sawmill Brook and Manchester Harbor**. The **Manchester, Gloucester, and Rockport** Fire Departments and Harbormasters will utilize various common Geographic Response Strategy (GRS) tactics to protect sensitive resources in **Sawmill Brook and Manchester Harbor** and the surrounding area.

6. Prepared by: MassDEP

Position/Title: Exercise Controller

ICS 201, Page 1

Date/Time:

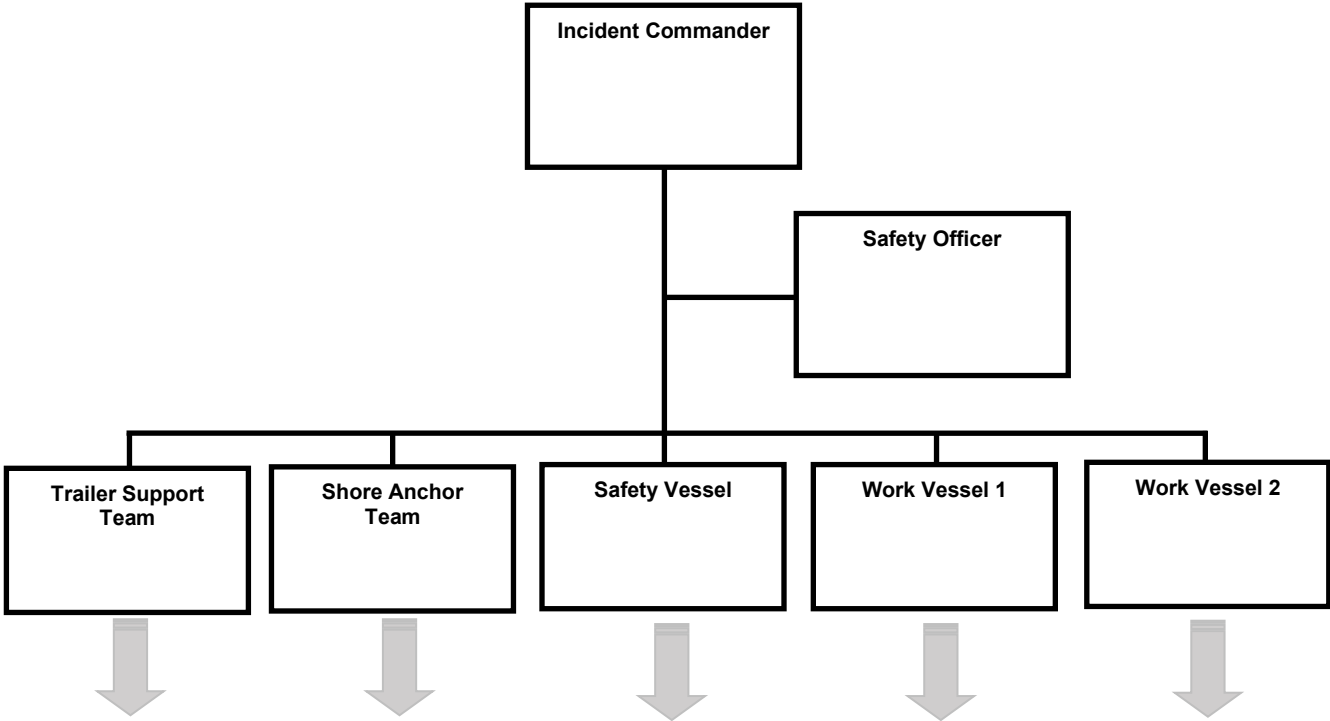
INCIDENT BRIEFING (ICS 201)

1. Incident Name: 2024 Manch/Glouc/Rckpt GRS EX

2. Incident Number: 99-24

3. Date: 10APR24

9. Current Organization (fill in additional organization as appropriate):



6. Prepared by: MassDEP

Position/Title: Exercise Controller

ICS 201, Page 3

Date/Time:

INCIDENT BRIEFING (ICS 201)

1. Incident Name: 2024 Manch/Glouc/Rckpt GRS EX	2. Incident Number: 99-24	3. Date: 10APR24
10. Resource Summary:		
Resource	Resource Identifier	Notes (location/assignment/status)
Gloucester FD	Personnel	5
Gloucester HM	Personnel	5
Manchester FD	Personnel	5
Manchester HM	Personnel	5
Rockport FD	Personnel	TBD
Rockport HM	Personnel	2-3
USCG Sector Boston	Personnel	3-4
23' Parker/250hp; 25' Parker/175hp; 20' Custom Marine/90hp; 13' Boston Whaler/50hp	Vessels	Gloucester HM
25' Defender/450hp; 14' RHIB/35hp	Vessels	Manchester FD
25' Eastern/45hp; 21' Pumpout/135hp	Vessels	Manchester HM
MassDEP Trailer - Gloucester HM	Response Equipment	Hands-On Training
MassDEP Trailer - Manchester FD	Response Equipment	Boom Deployment
MassDFS Rehab Unit	Exercise Support	TBD
Drone - Manchester PD	Drone Support	TBD
6. Prepared by: Prepared by: MassDEP Position/Title: Exercise Controller		
ICS 201, Page 4		Date/Time:

SAFETY MESSAGE/PLAN (ICS 208)

1. Safety Message/Expanded Safety Message, Safety Plan, Site Safety Plan:

KNOWN SAFETY HAZARDS:

- **Lines under tension** (boom towing and shoreside anchoring)
- **Pinch points** (connecting boom, boom towing, vessel operations)
- **Heavy lifting** (boom and anchors) - Observe safe lifting practices.
- **Entanglement** – Personnel, lines/rigging, and boom. Personnel, lines, propellers. Maintain situational awareness when working around lines, anchors and boom during shoreside and on-water deployment operations to ensure that entanglement does not occur. Do not stand in the bight of lines or where boom is faked out for deployment.
- **Loose clothing and jewelry** – Refrain from wearing loose clothing that may snag or become entangled on equipment. Jewelry including necklaces and rings should be removed while engaged in equipment deployment operations.
- **Slips, trips, and falls** - Exercise caution in wet, muddy, and rocky areas and when working on piers or bulkheads near water to avoid falling. During boom deployment and retrieval when working in, on, or near the equipment trailers and ramps, special precaution must be taken to avoid injury when working on trailer ramp and around trailer ramp cables. Caution tape provided in trailer should be attached to trailer ramp cables to mark their location.
- **Crushing injuries** – Use caution when working with anchors, driving shoreside stakes with sledgehammer, and when working alongside other vessels to avoid crushing injuries.
- **Vessel Operations** – Working near other vessels; Boom deployment and towing and rigging near outboard motors and vessel screws/propellers.
- **Flotsam and debris** – Conduct shoreside walkdown (Exercise Safety Officer) to identify and remove dangerous objects including glass, sharp objects, or debris washed up on shore that may endanger participants and/or impede exercise activities. Medical waste should only be retrieved by on-scene medical personnel. Flotsam should only be removed if it can be done safely and only if it impedes exercise activities.
- **Hypothermia** – Dependent on water temperature. If participant is immersed in water, extricate safely and quickly, and treat as appropriate.
- **Heat Stress/Stroke** – Dependent upon air temperature and humidity. Exposure to extreme heat may put participants at risk for heat stress. Heat stress can result in heat stroke, heat exhaustion, heat cramps, or heat rashes. Participants exhibiting heat stress related symptoms must be treated immediately IAW participating agency protocols.

SPECIFIC PRECAUTIONS:

- An Exercise Safety Officer will be identified and be responsible for participant safety.
- FIRST AID equipment is available. EMT/Paramedics are available on-scene.
- Personal Flotation Devices (PFDs) are required for all vessel personnel and all shoreside personnel working along shoreline, bulkheads or piers.
- Steel-toe boots and safety glasses should be worn.
- Hearing protection should be worn when working around generator and air compressor.
- Sufficient personnel shall engage in loading and unloading boom from trailers to prevent injury.
- All vessel operators will conduct a safety brief with passengers to review vessel-specific safety precautions.
- During vessel operations, a spotter should be assigned to provide guidance to vessel operator. Utilize fenders when mooring alongside pier/dock and when rafting with other vessels.
- Man overboard – Assigned vessel spotter must maintain constant visual contact with man overboard and provide position and direction to vessel operator. “Emergency” phrase must be communicated to all exercise participants. Incident Commander or Exercise Coordinator will halt all exercise activity.
- Vessel load balancing - Each vessel operator must ensure that personnel and equipment are stationed and distributed appropriately on deck.
- Hydration – Participants should ensure they remain properly hydrated based on their level of exertion and on-scene weather conditions (heat, humidity). Water is provided.
- Sunscreen – Participants should ensure proper sunscreen application based on weather conditions. Sunscreen is provided.

2. Site Safety Plan Required? Yes No

Approved Site Safety Plan(s) Located At: N/A

3. Prepared by: MassDEP

Position/Title: Exercise Controller

ICS 208, Page 1

Date:

Appendix A: Supplemental Exercise Information

Safety Marine Information Broadcast (SMIB)

Mariners are advised that an oil spill exercise will be conducted in Manchester Harbor in the vicinity of Masconomo Park on **April 10, 2024, from approximately 11:00 a.m. until 1:00 p.m.** Containment boom will be deployed in the water and vessels with the Manchester, Gloucester, and Rockport Fire Departments and Harbormasters will be operating in the area. Mariners are advised to use caution when transiting this area. Interested mariners may contact the Manchester-by-the-Sea Harbormaster or the U.S. Coast Guard by VHF radio.