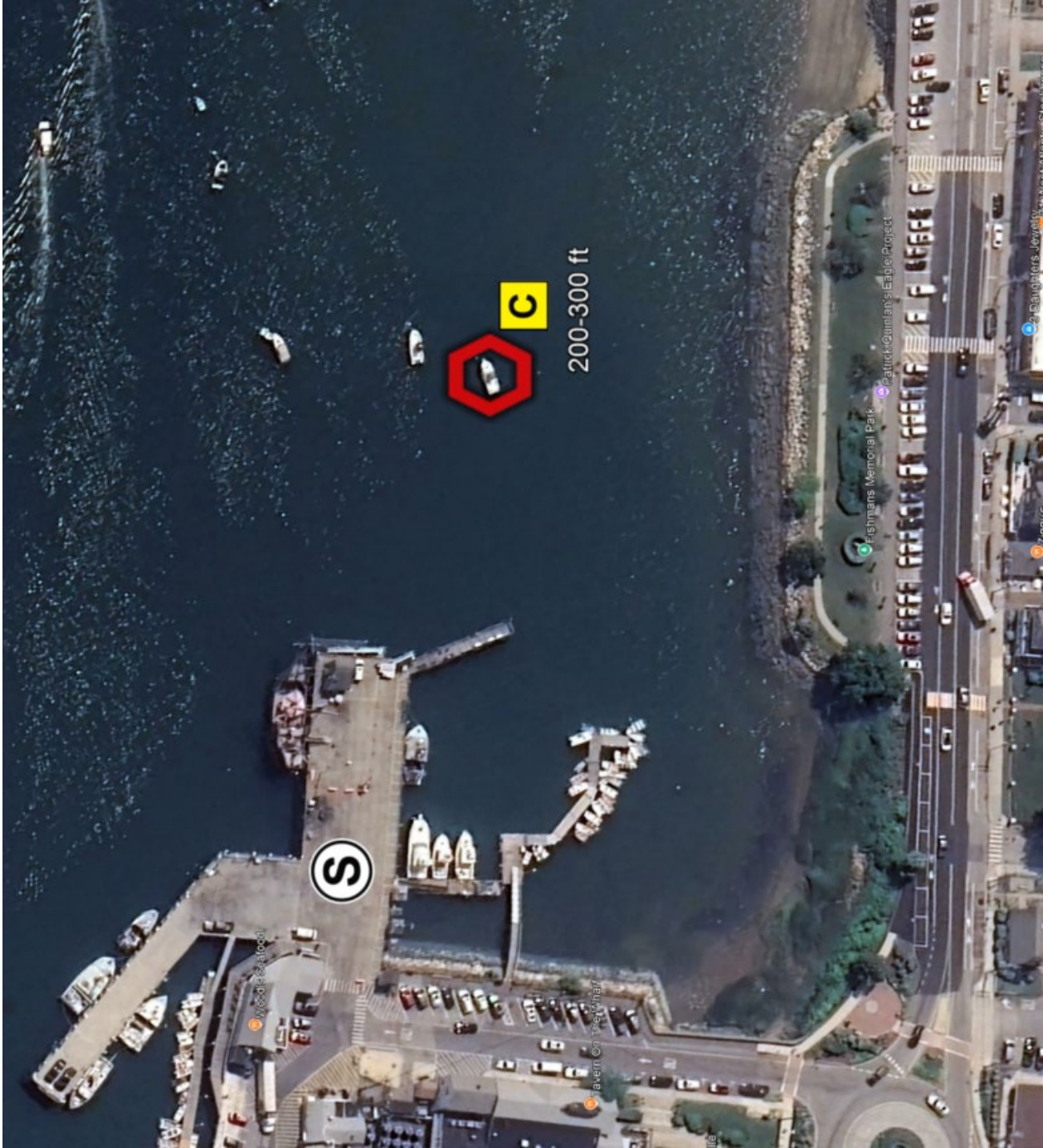


# INCIDENT BRIEFING (ICS 201)

1. Incident Name: 2025 Plymouth/Kingston FR EX	2. Incident Number: PK-25	3. Date: 29APR2025
---	------------------------------	-----------------------

## 4. Tactic Map/FR Deployment Drills

Phase 1: Deploy 200-300 ft of containment boom around a vessel moored near Plymouth Town Wharf



1. Incident Name:  
2025 Plymouth/Kingston FR EX

2. Incident Number:  
PK-25

3. Date:  
29APR2025

Phase 2: Deploy 150-200 ft of boom in a DV/EX configuration at the confluence of Town Brook and Plymouth Harbor



5. Situation Summary and Health and Safety Briefing (for briefings or transfer of command):

An oil spill has occurred that threatens **Town Wharf, Town Brook** and the surrounding areas. The **Plymouth and Kingston** Fire Departments and Harbormasters will utilize various common Geographic Response Strategy (GRS) tactics to protect sensitive resources in these areas.

6. Prepared by: MassDEP

Position/Title: Exercise Controller

ICS 201, Page 1

Date/Time: 29APR2025

## INCIDENT BRIEFING (ICS 201)

<b>1. Incident Name:</b> 2025 Plymouth/Kingston FR EX	<b>2. Incident Number:</b> PK-25	<b>3. Date:</b> 29APR2025
--	-------------------------------------	------------------------------

**7. Current and Planned Objectives:**

**Program Objective:** Demonstrate the ability of local first responders to conduct initial response activities within the first 4-6 hours of an oil spill incident by deploying MassDEP oil spill response equipment and implementing common Geographic Response Strategy (GRS) tactics.

**Exercise Objective:** Complete the deployment of 200-300 ft of containment boom around a moored vessel near Town Wharf then a 150-200 ft EX/DV tactic at Town Brook (as outlined in ICS-201 Section 4 and Ops Brief).

Tidal Information (approx.) for Plymouth, MA on 29APR2025							
HIGH				LOW			
AM	ft	PM	ft	AM	ft	PM	ft
12:46	12.4	1:21	10.8	7:19	-1.6	7:33	-0.2

Wind Speed	Wind Direction	Wind Average	Air Temp	Sky Condition
10-20 mph	SW	14 mph	60	Partly cloudy

**8. Current and Planned Actions, Strategies, and Tactics:**

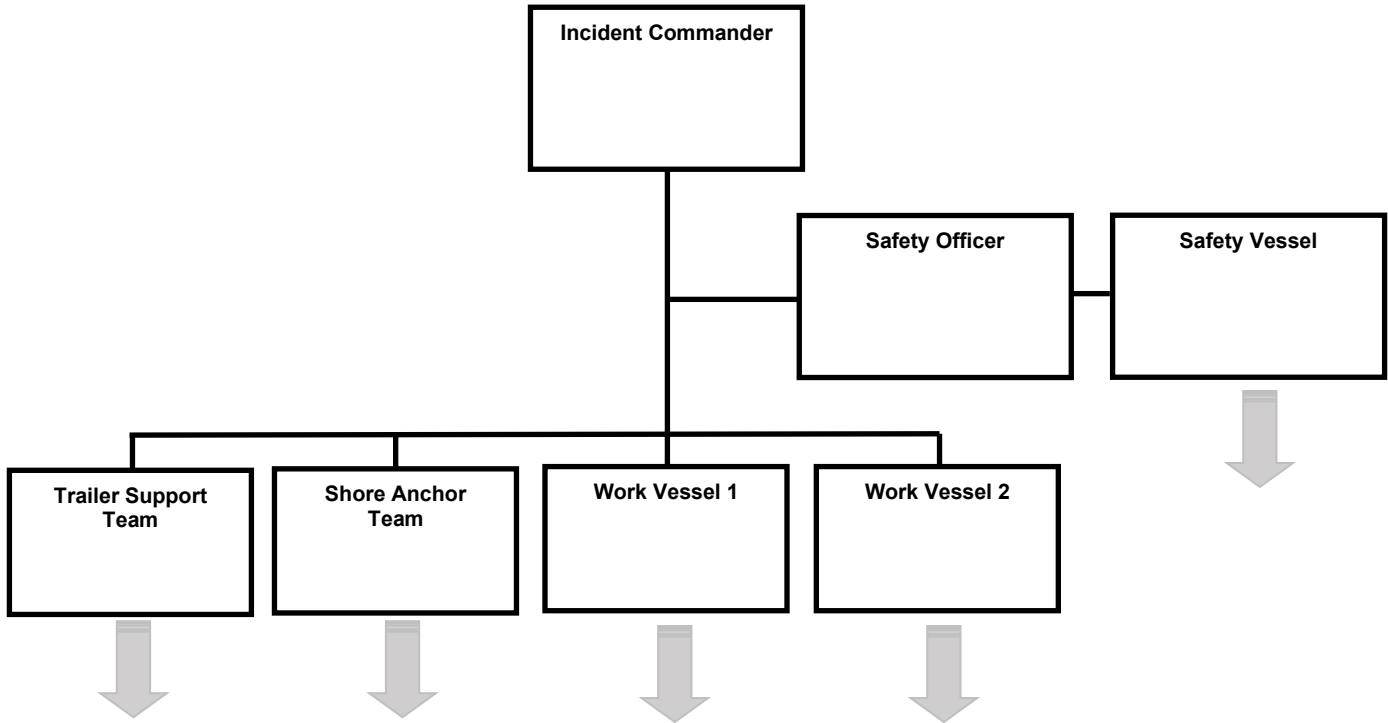
Time:	Actions:
0830	All Personnel Mobilize and Stage Equipment: Plymouth Harbormaster Office (185 Water St, Plymouth)
0900	Intro, Sign-In, and Exercise Overview
0915	Classroom Session
1015	Trailer Equipment Familiarization and Hands-on Training
1115	LUNCH
1145	Final Safety and Operations Brief
1200	All vessels transit from Harbormaster Dock to Town Wharf and deploy 200-300 ft of containment boom around a moored vessel
1245	Demobilize containment array and all vessels transit to Town Brook for the deployment of a 150-200 ft DV/EX tactic
1345	Demobilize, Rinse, Repack Equipment at Plymouth Harbormaster Dock
1430	Conduct Hot Wash at Plymouth Harbormaster Dock
1445	Secure from Exercise

<b>Prepared by:</b> MassDEP	<b>Position/Title:</b> Exercise Controller
<b>ICS 201, Page 2</b>	<b>Date/Time:</b> 29APR2025

# INCIDENT BRIEFING (ICS 201)

1. Incident Name: 2025 Plymouth/Kingston FR EX	2. Incident Number: PK-25	3. Date: 29APR2025
---	------------------------------	-----------------------

9. Current Organization (fill in additional organization as appropriate):



6. Prepared by: MassDEP	Position/Title: Exercise Controller
ICS 201, Page 3	Date/Time: 29APR2025

## INCIDENT BRIEFING (ICS 201)

<b>1. Incident Name:</b> 2025 Plymouth/Kingston FR EX	<b>2. Incident Number:</b> PK-25	<b>3. Date:</b> 29APR2025
<b>10. Resource Summary:</b>		
<b>Resource:</b>	<b>Resource Identifier:</b>	<b>Notes (location/assignment/status):</b>
Plymouth FD	Personnel	6
Plymouth HM	Personnel	3-4
Kingston FD	Personnel	3
Kingston HM	Personnel	TBD
Plymouth Town Manager & Select Board	Personnel	TBD - Observing
USCG	Personnel	3-5
MassDEP/MassDEP SERO/NERO	Personnel	4-5
Nuka Research	Personnel	2
MER	Personnel	2-3
27' Safeboat	Working Vessel	Plymouth HM
15' Whaler	Working Vessel	Plymouth HM
34' HM Boat	Safety Vessel	Plymouth HM
Boom Rinse	Support	Plymouth HM
Drone & Drone Team	Support	Plymouth HM
Radios	Support	All
MassDEP Trailer – Plymouth	Response Equipment	On Water Deployment
MassDEP Trailer – Kingston	Response Equipment	Trailer Training Stations
<b>6. Prepared by:</b> MassDEP	<b>Position/Title:</b> Exercise Controller	
<b>ICS 201, Page 4</b>	<b>Date/Time:</b> 29APR2025	

## SAFETY MESSAGE/PLAN (ICS 208)

### KNOWN SAFETY HAZARDS:

- **Lines under tension** Boom towing and shoreside anchoring.
- **Pinch points** Connecting boom, boom towing, vessel operations.
- **Heavy lifting** Boom and anchors - observe safe lifting practices.
- **Entanglement** - Working around lines, anchors, and boom during shoreside and on-water deployment operations. Do not stand in the bight of lines or where boom is flaked out for deployment.
- **Loose clothing and jewelry** - Refrain from wearing loose clothing that may snag or become entangled on equipment. Jewelry including necklaces and rings should be removed.
- **Slips, trips, and falls** - Exercise caution in wet, muddy, and rocky areas and when working on piers, docks, or boat ramps near water. When working in, on, or near equipment trailers during boom retrieval and deployment, special precautions must be taken to avoid injury. For example, caution tape (provided in each trailer) should be tied to trailer ramp cables to mark their location.
- **Crushing injuries** - Exercise caution when working with anchors, while driving shoreside stakes with sledge or slide hammers, and when working alongside other vessels to avoid crushing injuries.
- **Vessel Operations** - Exercise caution when working near other vessels in boom deployment, towing, and rigging operations. Use caution when working near outboard motors and propellers.
- **Flotsam and debris** - Exercise Safety Officers shall conduct shoreside walkdowns to identify and remove dangerous objects (glass, sharp materials, or debris washed up on shore) that may endanger participants and/or impede exercise activities. Medical waste should only be retrieved by on-scene medical personnel. Flotsam should only be removed if it can be done safely and only if it impedes exercise activities.
- **Hypothermia** - Dependent on water temperature. If a participant is immersed in water, extricate safely and quickly, and treat them as appropriate.
- **Heat Stress/Stroke** - Dependent upon air temperature and humidity. Exposure may put participants at risk for heat stress, which can result in heat stroke, heat exhaustion, heat cramps, or rashes. Participants exhibiting heat stress symptoms must be treated immediately.

### SPECIFIC PRECAUTIONS:

- An Exercise Safety Officer will be identified and responsible for all participant safety.
- First-Aid equipment should be made available. EMTs/Paramedics will be available on-scene.
- Personal Flotation Devices (PFDs) are required for all vessel crews and all shoreside personnel working along shorelines, boat ramps, and piers.
- All working personnel shall wear the appropriate foot gear during operations (waders, steel-toe boots)
- Sufficient personnel shall engage in loading and unloading boom from trailers to prevent injury.
- Hearing protection should be worn when working around generators and air compressors.
- Vessel operators shall conduct a safety brief with passengers to review vessel-specific safety precautions.
- An on-vessel spotter shall be assigned to provide guidance to the vessel operator.
- Utilize fenders when mooring alongside piers/docks and when rafting with other vessels.
- Person overboard - vessel spotter must maintain constant visual contact with the person overboard and provide position and direction assistance to the vessel operator. "Emergency" phrases must be communicated to all exercise participants via radio. Incident Commander will halt all exercise activity.
- Vessel load balancing - Each vessel operator must ensure that personnel and equipment are stationed and distributed appropriately on deck.
- Vessel occupancy – Vessel operators must adhere to the vessel's occupancy limits to avoid overloading.
- Hydration – Participants should ensure they remain properly hydrated throughout the exercise, especially in extreme heat situations. Water will be provided.
- Sunscreen – Participants should ensure proper sunscreen application based on weather conditions.

Prepared by: MassDEP

Position/Title: Exercise Controller

ICS 208, Page 1

Date: 29APR2025