



MassDEP Geographic Response Plan – 2016 Marblehead Harbor (NS-27) Exercise

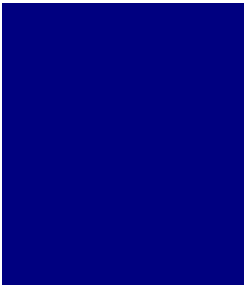
Exercise Plan

May 25, 2016

The Exercise Plan (ExPlan) gives elected and appointed officials, observers, media personnel, and players from participating organizations information they need to observe or participate in the exercise. Some exercise material is intended for the exclusive use of exercise planners, controllers, and evaluators, but players may view other materials that are necessary to their performance. All exercise participants may view the ExPlan.

EXERCISE OVERVIEW

Exercise Name	2016 Marblehead Harbor GRP Exercise
Exercise Date	May 25, 2016
Scope	This exercise is a Full Scale Exercise, planned for approximately six hours in Marblehead, MA and upon the waters of the Marblehead Harbor. Exercise play is limited to the Marblehead Harbor and the adjacent shoreline.
Mission Area(s)	Response
Core Capabilities	Environmental Response/Health and Safety, Operational Coordination, Operational Communications.
Objectives	<p>Objective 1: Demonstrate the ability to deploy oil spill equipment from one or more MassDEP pre-positioned oil spill response trailers utilizing common Geographic Response Plan (GRP) tactics.</p> <p>Objective 2: Demonstrate the ability to assemble a spill response organization utilizing Incident Command System (ICS) principles through development and execution of an Incident Briefing (ICS 201) and implementation of on-site incident management and tactical operations.</p> <p>Objective 3: Demonstrate the ability to effectively communicate between multiple local, state, and federal agencies including fire departments, police departments, harbormasters, and other state and federal first responders using VHF communications.</p>
Threat or Hazard	Discharge of oil into a navigable waterway
Scenario	An oil spill has occurred that threatens Marblehead Harbor. The Marblehead and Swampscott Fire Departments and Harbormasters staff will utilize GRP NS-27 to deploy protective booming to protect sensitive resources in Marblehead Harbor.
Sponsor	Massachusetts Department of Environmental Protection.
Participating Organizations	<p>Participating organizations will include:</p> <ul style="list-style-type: none">• Marblehead Fire Department (MFD)• Marblehead Harbormaster (MHM)• Swampscott Fire Department (BFD)• Swampscott Harbormaster (BHM)



- Rehab-Five
- Atlantic Ambulance Service
- MassDEP
- U.S. Coast Guard Sector Boston (USCG)
- Moran Environmental Recovery (MER)
- Nuka Research and Planning Group, LLC (Nuka Research)



Point of Contact

Julie Hutcheson, Marine Oil Spill Program Coordinator
Massachusetts Department of Environmental Protection
Oil Spill Prevention and Response Program
1 Winter St.
Boston, MA 02108
(617) 556-1191
Julie.Hutcheson@state.ma.us

GENERAL INFORMATION

Exercise Objectives and Core Capabilities

The following exercise objectives in Table 1 describe the expected outcomes for the exercise. The objectives are linked to core capabilities, which are distinct critical elements necessary to achieve the specific mission area(s). The objectives and aligned core capabilities are guided by elected and appointed officials and selected by the Exercise Planning Team.

Exercise Objective	Core Capability
Demonstrate the ability to deploy oil spill equipment from one or more MassDEP pre-positioned oil spill response trailers utilizing common Geographic Response Plan (GRP) tactics.	Environmental Response/Health & Safety
Demonstrate the ability to assemble a spill response organization utilizing Incident Command System (ICS) principles through development and execution of an Incident Briefing (ICS 201) and implementation of on-site incident management and tactical operations	Operational Coordination
Demonstrate the ability to effectively communicate between multiple local, state, and federal agencies including fire departments, police departments, harbormasters, and other state and federal first responders using VHF communications	Operational Communication

Table 1. Exercise Objectives and Associated Core Capabilities

APPENDIX A: EXERCISE SCHEDULE

Time	Personnel	Activity	Location
May 25, 2016			
0830	Marblehead & Swampscott FD & HM	Mobilize and Stage Equipment	Chandler Hovey Park/Lighthouse Point and Corinthian YC at Nahant St.
0900	All	Conduct First Responder Training, GRP Overview, Oil Spill 101 (classroom)	Abbot Public Library, 235 Pleasant St., Marblehead, MA 02945
1030	All	Transit to Chandler Hovey Park/Lighthouse Point	
1045	All	Conduct MassDEP trailer equipment familiarization and hands-on training	Chandler Hovey Park/Lighthouse Point
1130	All	Lunch	Chandler Hovey Park/Lighthouse Point
1200	All	Safety, Operational, and Communications Briefing. Deploy Diversion (DV-01a) tactic at cove south fo Lighthouse Point. Deploy surrogate. Evaluate configuration.	Chandler Hovey Park/Lighthouse Point and Corinthian YC
1330	All	Demobilize all boom, rinse and repack equipment	Chandler Hovey Park/Lighthouse Point and Corinthian YC
1400	All	Hot Wash/Complete and turn in all Participant Feedback Forms	Chandler Hovey Park/Lighthouse Point
1430	All	Demobilize/Adjourn	

Tides (Marblehead Harbor, MA – May 25, 2016)

HIGH				LOW			
AM	ft	PM	ft	AM	ft	PM	ft
2:03	9.8	2:41	8.8	8:23	0.1	8:35	1.1

APPENDIX B: EXERCISE PARTICIPANTS

Participating Organizations	
Town of Marblehead, MA	Participant Count
Marblehead Fire Department	10
Marblehead PD/Harbormaster	5-6
Town of Swampscott MA	
Swampscott Fire Department	10
Swampscott Harbormaster	2
Other	
Atlantic Ambulance Service	2
TOWN PARTICIPANTS	29-30
Federal	
United States Coast Guard (USCG)	7
State	
Massachusetts Department of Environmental Protection (MassDEP)	2-3
Nuka Research and Planning Group, LLC (contractor for MassDEP)	3
Moran Environmental Recovery (contractor for MassDEP)	2
TOTAL	43-45

APPENDIX C: EXERCISE EQUIPMENT

Agency	Type	Description (length, horsepower, spec capability)
Local		
Marblehead FD	MassDEP Trailer	Boom Deployment
	Apparatus	Boom/Equipment Rinse
	Vessel	25' Safeboat
Marblehead HM	Vessel	25' Hornet
Swampscott FD	MassDEP Trailer	Boom/Equipment Demonstration
	Vessel	19' Boston Whaler/150HP
Rehab-Five*	Support Equip.	Tents/Canopies, Water, Other
Atlantic Ambulance	Ambulance	First Aid/Emergency Transport
State		
MassDEP	Trailer(s)	<i>See above under local equipment</i>

* - Roger Baker (volunteer firefighter) provides services for firefighters including cooling tents, water, food

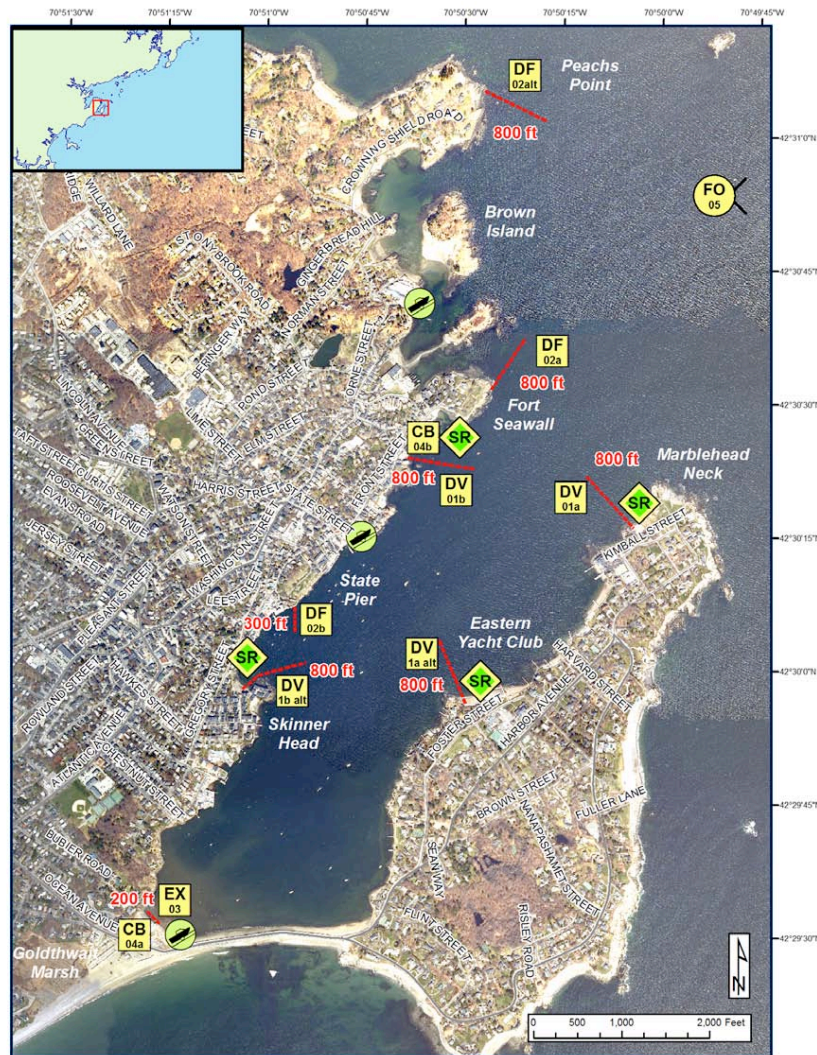
[illegible]

*This exercise will serve as a proof of concept for maritime/land interoperability.

APPENDIX E: MARBLEHEAD HARBOR (NS-27) GRP MAP



North Shore Geographic Response Plan
Marblehead Harbor NS-27



BB Beach Berm	DF Deflection Booming	MD Mosquito Ditch
CB Culvert Block	EX Exclusion Booming	U.S. Coast Guard Station
DV Diversion Booming	SR Shoreside Recovery	Boat Ramp
PR Passive Recovery	FO Free-oil Recovery	Snare or Sorbent Boom
		Protected-water Boom (Flood Tide)
		Protected-water Boom (Ebb Tide)
		Beach Berm Material

Map Legend

A total of 3 State Response Trailers are required to implement all of the tactics in this GRP. Responders should always consider on-scene conditions before deploying GRP tactics. Tactics may not be safe or effective under certain conditions. Responder safety should always be the first priority.

Version: August 2011
Page 1 of 4

Nuka Research and Planning Group, LLC

