

INCIDENT BRIEFING (ICS 201)

1. Incident Name: 2024 Onset/Wareham GRS EX	2. Incident Number: 107-24	3. Date: 23SEP2024
---	-----------------------------------	--------------------

4. Tactic Map/FR Deployment Drills

MassDEP Buzzards Bay Geographic Response Strategy

Tactics Legend

DF	Deflection Booming
DV	Diversion Booming
EX	Exclusion Booming
FO	Free Oil Recovery
PR	Passive Recovery
SR	Shoreside Recovery
S	Staging Area
BR	Boat Ramp
BB	Beach Berm
TG	Tide Gate
PW	Protected-Water Boom
OW	Open-Water Boom
SS	Snare/ Sorbent Boom

Equipment - All Tactics

Boom(ft)	1400
Marine anchors	8
Shore anchors	4
Sorbent Boom(ft)	0
FO Recovery Sys	0
Shore Responders	2
Boat Responders	3
Boats	2

Version
2/15/2023

Little Harbor BB24

Location

Latitude: 41°43'37" N
Longitude: 70°40'54" W
NOAA Chart #

Response Trailer, Tactics Deployment, and Responder Safety Information

A total of 2 state response trailers are required to implement all the tactics in this GRS. Responders should always consider on-scene conditions before deploying GRP tactics. Tactics may not be safe or effective under certain conditions. Responder safety should always be the first priority.

5. Situation Summary and Health and Safety Briefing (for briefings or transfer of command): Recognize potential incident Health and Safety Hazards and develop necessary measures (remove hazard, provide personal protective equipment, warn people of the hazard) to protect responders from those hazards.

An oil spill has occurred that threatens **Little Harbor** and the adjacent shorelines. The **Onset and Wareham** Fire Departments and Harbormasters will utilize various common Geographic Response Strategy (GRS) tactics to protect sensitive resources in **Little Harbor** and the surrounding area.

6. Prepared by: MassDEP	Position/Title: Exercise Controller
ICS 201, Page 1	Date/Time: 23SEP2024

INCIDENT BRIEFING (ICS 201)

1. Incident Name: 2024 Onset/Wareham GRS EX	2. Incident Number: 107-24	3. Date: 23SEP2024
--	-----------------------------------	---------------------------

7. Current and Planned Objectives:

Program Objective: Demonstrate the ability of local first responders to conduct initial response activities within the first 4-6 hours of an oil spill incident by deploying MassDEP oil spill response equipment and implementing common Geographic Response Strategy (GRS) tactics.

Exercise Objective: Complete test of DV01b tactic as outlined in Section 4 and Ops Brief.

Tidal Information (approx.) for Onset, MA on 23SEP2024							
HIGH				LOW			
AM	ft	PM	ft	AM	ft	PM	ft
12:58	3.8	1:29	4.3	6:43	0.2	8:42	0.7

Wind Speed	Wind Direction	Wind Average	Air Temp	Sky Condition
14 mph	NE	10-20 mph	66	Mostly cloudy

8. Current and Planned Actions, Strategies, and Tactics:

Time:	Actions:
0830	All Personnel Mobilize and Stage Equipment: Onset Fire Station (8 Sand Pond Rd, East Wareham)
0900	Intro, Sign-In, and Exercise Overview
0915	Classroom Session
1015	Trailer Equipment Familiarization and Hands-on Training
1115	All Personnel Transit to Deployment Staging Location: Little Harbor Beach, Wareham
1130	LUNCH
1200	Final Safety and Operational Brief
1215	Initiate Test of DV01b Tactic
1345	Demobilize, Rinse, Repack Equipment
1415	Conduct Hot Wash
1430	Secure from Exercise

Prepared by: MassDEP	Position/Title: Exercise Controller
ICS 201, Page 2	Date/Time: 23SEP2024

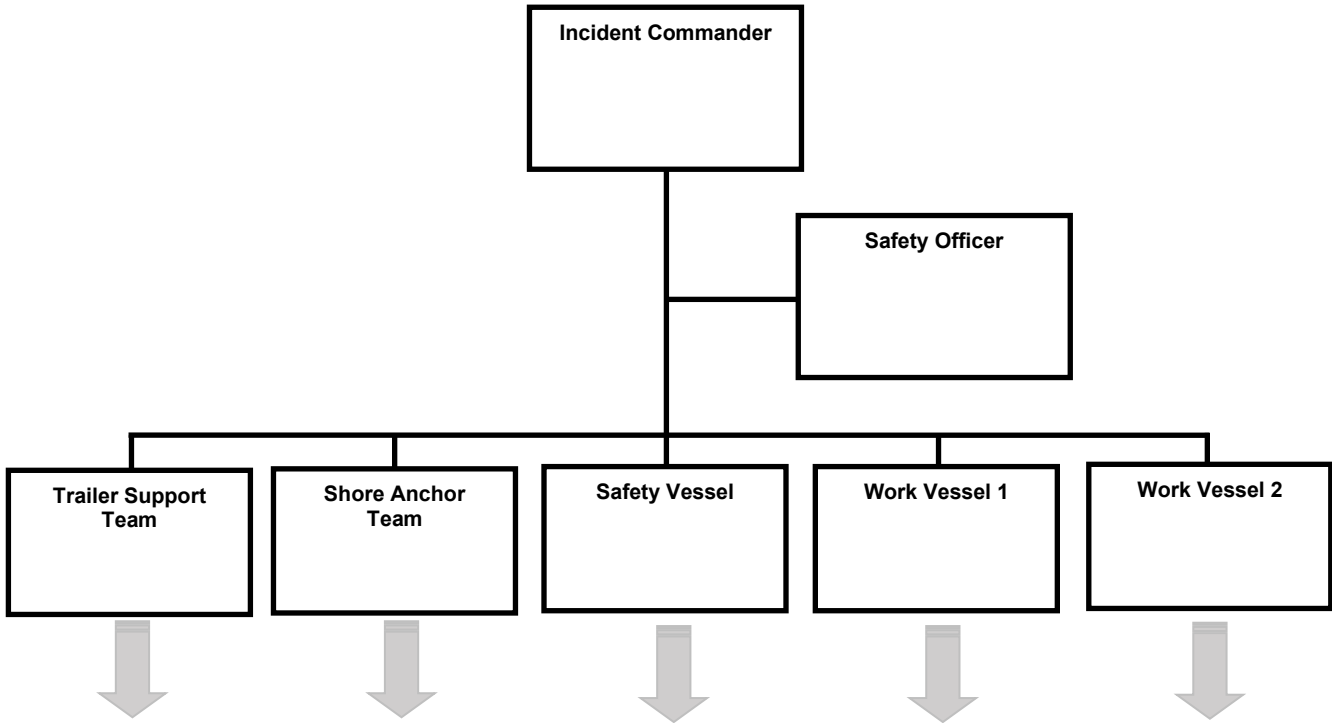
INCIDENT BRIEFING (ICS 201)

1. Incident Name: 2024 Onset/Wareham GRS EX

2. Incident Number: 107-24

3. Date: 23SEP2024

9. Current Organization (fill in additional organization as appropriate):



6. Prepared by: MassDEP

Position/Title: Exercise Controller

ICS 201, Page 3

Date/Time: 23SEP2024

INCIDENT BRIEFING (ICS 201)

1. Incident Name: 2024 Onset/Wareham GRS EX	2. Incident Number: 107-24	3. Date: 23SEP2024
10. Resource Summary:		
Resource:	Resource Identifier:	Notes (location/assignment/status):
Wareham FD	Personnel	4-8 (4-5 active, 3-4 command)
Wareham HM	Personnel	2-3
Onset FD	Personnel	4-8 (4-5 active, 3-4 command)
USCG	Personnel	3-4
MassDEP/MassDEP SERO	Personnel	2-4
Nuka Research	Personnel	2
MER	Personnel	2-3
25' Safeboat	Vessel	Wareham FD – TBD based on available crews
21' Whaler	Vessel	Wareham FD – TBD based on available crews
25' Safeboat	Vessel	Onset FD
18' Skiff	Vessel	Wareham HM
Pump Truck (Boom Rinse)	Support	Wareham FD Pump Truck
MassDEP Trailer – Wareham	Response Equipment	Trailer training & On-water deployment
6. Prepared by: MassDEP		Position/Title: Exercise Controller
ICS 201, Page 4		Date/Time: 23SEP2024

Updated by MassDEP 2/2023

SAFETY MESSAGE/PLAN (ICS 208)

1. Safety Message/Expanded Safety Message, Safety Plan, Site Safety Plan:

KNOWN SAFETY HAZARDS:

- **Lines under tension** (boom towing and shoreside anchoring)
- **Pinch points** (connecting boom, boom towing, vessel operations)
- **Heavy lifting** (boom and anchors) - Observe safe lifting practices.
- **Entanglement** - Maintain situational awareness when working around lines, anchors, and boom during shoreside and on-water deployment operations. Do not stand in the bight of lines or where boom is flaked out for deployment.
- **Loose clothing and jewelry** - Refrain from wearing loose clothing that may snag or become entangled on equipment. Jewelry including necklaces and rings should be removed.
- **Slips, trips, and falls** - Exercise caution in wet, muddy, and rocky areas and when working on piers, docks, or boat ramps near water to avoid falling. When working in, on, or near equipment trailers during boom retrieval and deployment, special precautions must be taken to avoid injury. For example, caution tape (provided in each trailer) should be tied to trailer ramp cables to mark their location and avoid trip injuries.
- **Crushing injuries** - Exercise caution when working with anchors, while driving shoreside stakes with sledge or slide hammers, and when working alongside other vessels to avoid crushing injuries.
- **Vessel Operations** - Exercise caution when working near other vessels in boom deployment, towing, and rigging operations. Use caution when working near outboard motors and propellers.
- **Flotsam and debris** - Exercise Safety Officers shall conduct shoreside walkdowns to identify and remove dangerous objects (glass, sharp materials, or debris washed up on shore) that may endanger participants and/or impede exercise activities. Medical waste should only be retrieved by on-scene medical personnel. Flotsam should only be removed if it can be done safely and only if it impedes exercise activities.
- **Hypothermia** - Dependent on water temperature. If a participant is immersed in water, extricate safely and quickly, and treat them as appropriate.
- **Heat Stress/Stroke** - Dependent upon air temperature and humidity. Exposure to extreme heat may put participants at risk for heat stress. Heat stress can result in heat stroke, heat exhaustion, heat cramps, or heat rashes. Participants exhibiting heat stress related symptoms must be treated immediately, and in accordance with participating agency protocols.

SPECIFIC PRECAUTIONS:

- An Exercise Safety Officer will be identified and be responsible for all participant safety.
- First-Aid equipment should be made available. EMTs/Paramedics will be available on-scene.
- Personal Flotation Devices (PFDs) are required for all vessel crews and all shoreside personnel working along shorelines, boat ramps, and piers.
- All working personnel shall wear the appropriate foot gear during operations (waders, steel-toe boots)
- Sufficient personnel shall engage in loading and unloading boom from trailers to prevent injury.
- Hearing protection should be worn when working around generators and air compressors.

- Vessel operators shall conduct a safety brief with passengers to review vessel-specific safety precautions.
- A spotter shall be assigned to provide guidance to the vessel operator.
- Utilize fenders when mooring alongside piers/docks and when rafting with other vessels.
- Person overboard - Vessel spotter must maintain constant visual contact with the person overboard and provide position and direction assistance to the vessel operator. "Emergency" phrases must be communicated to all exercise participants via radio. Incident Commander will halt all exercise activity.
- Vessel load balancing - Each vessel operator must ensure that personnel and equipment are stationed and distributed appropriately on deck.
- Vessel occupancy – Vessel operators must adhere to the vessel's occupancy limits to avoid overloading.
- Hydration – Participants should ensure they remain properly hydrated throughout the exercise, especially in extreme heat situations. Water will be provided.
- Sunscreen – Participants should ensure proper sunscreen application based on weather conditions.

3. Prepared by: MassDEP

Position/Title: Exercise Controller

ICS 208, Page 1

Date: 23SEP2024