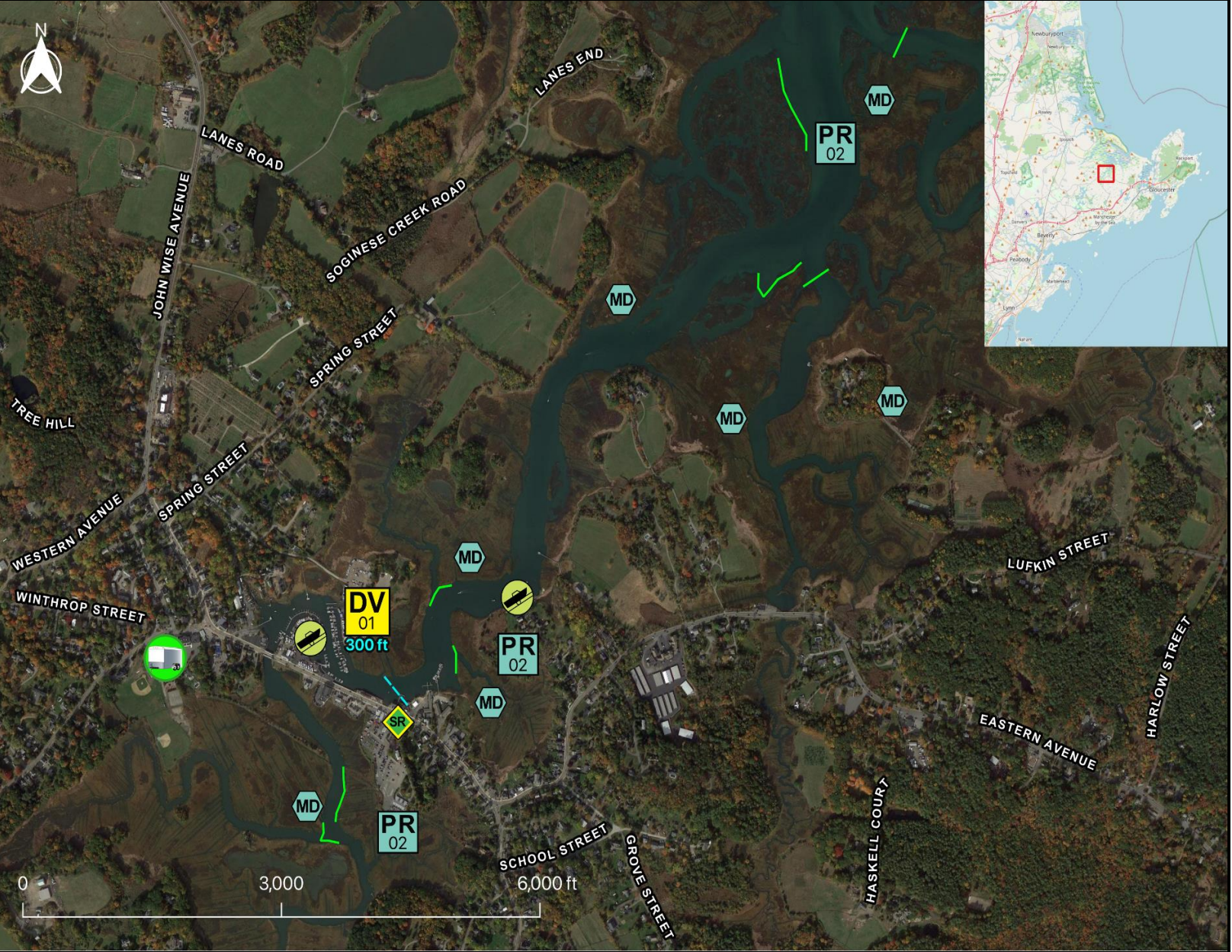


Tactics Legend

- DF** Deflection Booming
- DV** Diversion Booming
- EX** Exclusion Booming
- FO** Free Oil Recovery
- PR** Passive Recovery
- SR** Shoreside Recovery
- S** Staging Area
-  Boat Ramp
- BB** Beach Berm
- TG** Tide Gate
-  Protected-Water Boom
-  Open-Water Boom
-  Snare/ Sorbent Boom



Equipment - All Tactics

Boom(ft)	300
Marine anchors	2
Shore anchors	2
Sorbent Boom(ft)	3000
FO Recovery Sys	0
Shore Responders	2
Boat Responders	3
Boats	2

**Version**  
10/13/2022

Response Trailer, Tactics Deployment, and Responder Safety Information






A total of 1 state response trailers are required to implement all the tactics in this GRS.  
 Responders should always consider on-scene conditions before deploying GRP tactics.  
 Tactics may not be safe or effective under certain conditions.  
 Responder safety should always be the first priority.

Location

**Latitude:** 42°38'9" N  
**Longitude:** 70°46'3" W  
**NOAA Chart #** 13279

**Geographic Response Strategy**

**Essex River NS11**

<b>Tactic #</b>	<b>Purpose</b>	<b>Response Equipment</b>	<b>Deployment Resources</b>	<b>Deployment Notes</b>
<b>DV-01</b> 	Redirect spilled oil from one location or direction of travel to a specific site for recovery.	300 ft protected water boom 2 marine anchor system 4 shoreline anchor system	2 shore responders 1 response boats 3 boat responders	Tend through tidal changes. Deploy boom as depicted to divert incoming oil to the collection site. Anchor every 200-300'. Adjust angle as necessary to reduce entrainment. Set up shoreside recovery and tend throughout tide. Deploy shoreside anchor first. Alternate deployment with tide - reset during slack.
		N/A	<b>Testing Date</b>	
<b>PR-02</b> 	Remove spilled oil by collecting it in a sorbent material	1800 ft sorbent boom 1800 ft sorbent pom-poms 51 anchor stakes	2 shore responders	Place and stake snare or sorbent boom in areas that are likely to pool and collect oil and across the mouths of the streams and intertidal areas. Use snare boom for persistent oils and sorbent boom for non-persistent oils. Approach the streams and intertidal areas on rising tide. Replace as necessary to maximize oil recovery.
		N/A	<b>Testing Date</b>	
<b>PR-02</b> 	Remove spilled oil by collecting it in a sorbent material	500 ft sorbent boom 500 ft sorbent pom-poms 14 anchor stakes	2 shore responders	Place and stake snare or sorbent boom in areas that are likely to pool and collect oil and across the mouths of the streams and intertidal areas. Use snare boom for persistent oils and sorbent boom for non-persistent oils. Approach the streams and intertidal areas on rising tide. Replace as necessary to maximize oil recovery.
		N/A	<b>Testing Date</b>	
<b>PR-02</b> 	Remove spilled oil by collecting it in a sorbent material	700 ft sorbent boom 700 ft sorbent pom-poms 20 anchor stakes	2 shore responders	Place and stake snare or sorbent boom in areas that are likely to pool and collect oil and across the mouths of the streams and intertidal areas. Use snare boom for persistent oils and sorbent boom for non-persistent oils. Approach the streams and intertidal areas on rising tide. Replace as necessary to maximize oil recovery.
		N/A	<b>Testing Date</b>	
<b>SR-03</b> 	Remove spilled oil that has been diverted to a designated recovery site accessible from shore	1 skimming system 1 storage tank or bladder 1 hoses, pumps, fittings	2 shore responders	Set up shoreside recovery tactic at general location depicted on map. Some access points located at private residences. Access may be difficult.
		N/A	<b>Testing Date</b>	

**Local contacts**

Essex Fire Department	<a href="tel:978-768-6511">978-768-6511</a>
Essex Harbormaster	<a href="tel:978-768-6363">978-768-6363</a>
Essex Shellfish Constable	<a href="tel:978-361-5044">978-361-5044</a>
Mass Bays Estuary Assn	<a href="tel:978-374-0519">978-374-0519</a>
U.S.C.G. Station Merrimack	<a href="tel:978-462-3428">978-462-3428</a>
Mass Division of Marine Fisheries	<a href="tel:617-626-1520">617-626-1520</a>
Environmental Police	<a href="tel:800-632-8075">800-632-8075</a>



*Essex River (09 April 2008 photo)*

**Resources Protected**

Marine Mammals	None identified
Fish	None identified
Invertebrates	Shellfish
Birds	Roseate Tern
Threat/End. Species	None identified
Cultural	None identified
Subsistence	None identified
Human Use	Boat Ramps, Marina
Commercial Fishing	None identified
Land Management	None identified
Coastal Habitat	Marsh/Swamp, Tidal Flats



*Essex River looking north from RT 133 bridge at low tide (21 May 2009 photo)*

**Special Considerations & Navigational Hazards**

Tidal range 7-9 ft. Tidal current max speed of 1 kt in main channel. Vessel operators should have local knowledge and experience in operating in strong currents.