

Tactics Legend

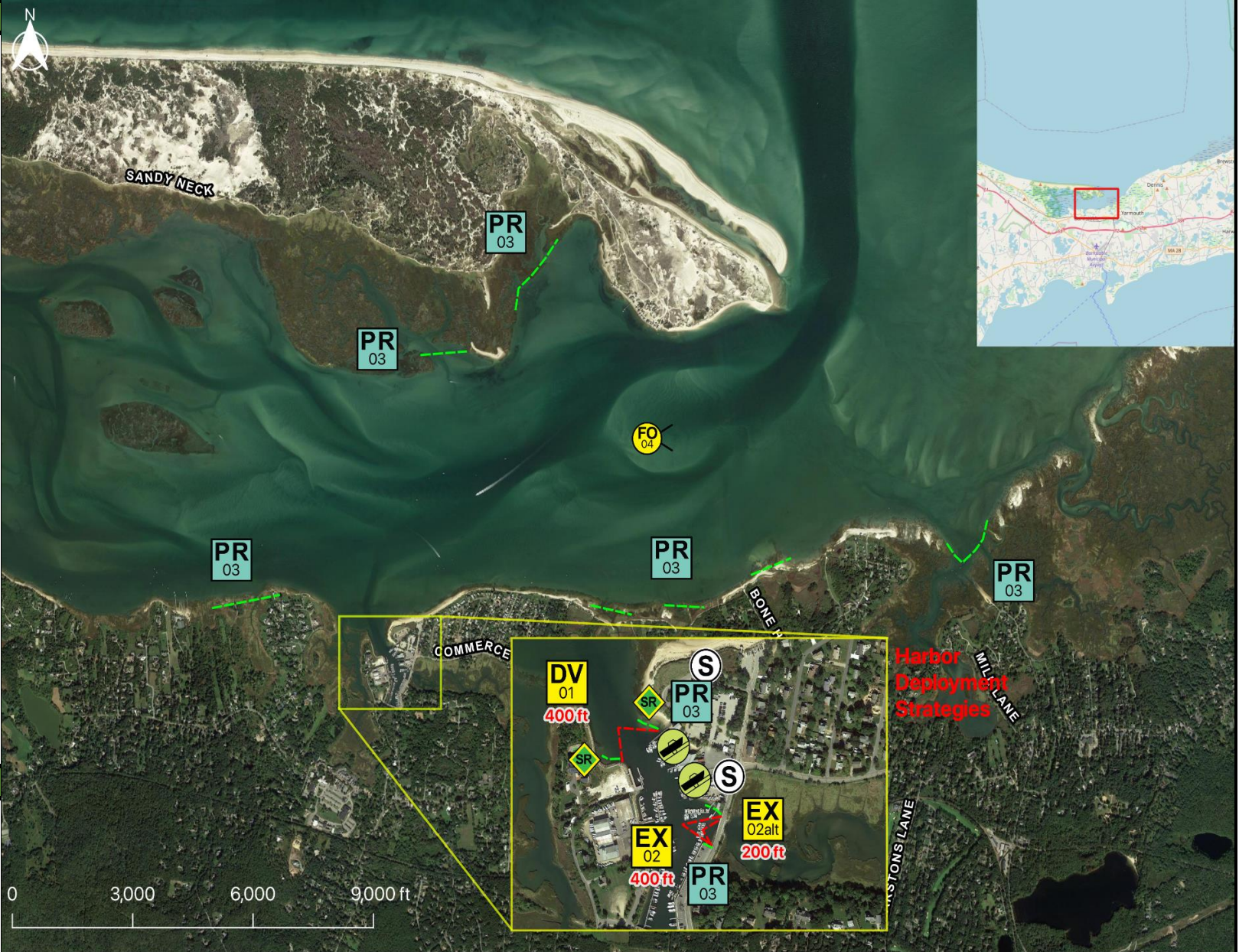
- DF** Deflection Booming
- DV** Diversion Booming
- EX** Exclusion Booming
- FO** Free Oil Recovery
- PR** Passive Recovery
- SR** Shoreside Recovery
- S** Staging Area
-  Boat Ramp
- BB** Beach Berm
- TG** Tide Gate
-  Protected-Water Boom
-  Open-Water Boom
-  Snare/ Sorbent Boom

Equipment - All Tactics

Boom(ft)	1000
Marine anchors	5
Shore anchors	6
Sorbent Boom(ft)	7100
FO Recovery Sys	1
Shore Responders	2
Boat Responders	3
Boats	2

Version

2/22/2022



Response Trailer, Tactics Deployment, and Responder Safety Information







A total of 1 state response trailers are required to implement all the tactics in this GRS.
 Responders should always consider on-scene conditions before deploying GRP tactics.
 Tactics may not be safe or effective under certain conditions.
 Responder safety should always be the first priority.

Location

Latitude: 41°43'8" N
Longitude: 70°17'18" W
NOAA Chart # 13251-1

Geographic Response Strategy

Barnstable CI03

Tactic #	Purpose	Response Equipment	Deployment Resources	Deployment Notes
 DV-01	Redirect spilled oil from one location or direction of travel to a specific site for recovery.	400 ft protected water boom 2 marine anchor system 4 shoreline anchor system	2 shore responders 1 response boats 3 boat responders	Tend through tidal changes. Deploy boom as depicted to divert incoming oil to the collection site. Anchor every 200-300'. Adjust angle as necessary to reduce entrainment. Set up shoreside recovery and tend throughout tide. Deploy shoreside anchor first.
		Testing Date	N Tested	
 EX-02	Prohibit oil slicks from entering a sensitive area	400 ft protected water boom 2 marine anchor system 4 shoreline anchor system	2 shore responders 1 response boats 3 boat responders	Tend through tidal changes. Deploy boom as depicted to exclude oil from sensitive areas. Anchor every 200-300'. Not tide dependent Deploy shoreside anchor first. Readjust boom angle as needed to reduce entrainment
		Testing Date	N Tested	
 EX-02alt	Prohibit oil slicks from entering a sensitive area	200 ft protected water boom 1 marine anchor system 4 shoreline anchor system	2 shore responders 1 response boats 3 boat responders	Tend through tidal changes. Deploy boom as depicted to exclude oil from sensitive areas. Anchor every 200-300'. Not tide dependent Deploy shoreside anchor first. Readjust boom angle as needed to reduce entrainment
		10/23/14 Testing Date	Y Tested	
 PR-03	Remove spilled oil by collecting it in a sorbent material	2100 ft sorbent boom 2100 ft sorbent pom-poms 60 anchor stakes	2 shore responders	Place and stake snare or sorbent boom in areas that are likely to pool and collect oil and across the mouths of the streams and intertidal areas. Use snare boom for persistent oils and sorbent boom for non-persistent oils. Approach the streams and intertidal areas on rising tide. Replace as necessary to maximize oil recovery.
		N/A Testing Date	Tested	
 PR-03	Remove spilled oil by collecting it in a sorbent material	1300 ft sorbent boom 1300 ft sorbent pom-poms 37 anchor stakes	2 shore responders	Place and stake snare or sorbent boom in areas that are likely to pool and collect oil and across the mouths of the streams and intertidal areas. Use snare boom for persistent oils and sorbent boom for non-persistent oils. Approach the streams and intertidal areas on rising tide. Replace as necessary to maximize oil recovery.
		N/A Testing Date	Tested	
 PR-03	Remove spilled oil by collecting it in a sorbent material	1200 ft sorbent boom 1200 ft sorbent pom-poms 34 anchor stakes	2 shore responders	Place and stake snare or sorbent boom in areas that are likely to pool and collect oil and across the mouths of the streams and intertidal areas. Use snare boom for persistent oils and sorbent boom for non-persistent oils. Approach the streams and intertidal areas on rising tide. Replace as necessary to maximize oil recovery.
		N/A Testing Date	Tested	
 PR-03	Remove spilled oil by collecting it in a sorbent material	1500 ft sorbent boom 1500 ft sorbent pom-poms 43 anchor stakes	2 shore responders	Place and stake snare or sorbent boom in areas that are likely to pool and collect oil and across the mouths of the streams and intertidal areas. Use snare boom for persistent oils and sorbent boom for non-persistent oils. Approach the streams and intertidal areas on rising tide. Replace as necessary to maximize oil recovery.
		N/A Testing Date	Tested	
 PR-03	Remove spilled oil by collecting it in a sorbent material	100 ft sorbent boom 100 ft sorbent pom-poms 3 anchor stakes	2 shore responders	Place and stake snare or sorbent boom in areas that are likely to pool and collect oil and across the mouths of the streams and intertidal areas. Use snare boom for persistent oils and sorbent boom for non-persistent oils. Approach the streams and intertidal areas on rising tide. Replace as necessary to maximize oil recovery.
		N/A Testing Date	Tested	
 PR-03	Remove spilled oil by collecting it in a sorbent material	800 ft sorbent boom 800 ft sorbent pom-poms 23 anchor stakes	2 shore responders	Place and stake snare or sorbent boom in areas that are likely to pool and collect oil and across the mouths of the streams and intertidal areas. Use snare boom for persistent oils and sorbent boom for non-persistent oils. Approach the streams and intertidal areas on rising tide. Replace as necessary to maximize oil recovery.
		N/A Testing Date	Tested	
 PR-03	Remove spilled oil by collecting it in a sorbent material	100 ft sorbent boom 100 ft sorbent pom-poms 3 anchor stakes	2 shore responders	Place and stake snare or sorbent boom in areas that are likely to pool and collect oil and across the mouths of the streams and intertidal areas. Use snare boom for persistent oils and sorbent boom for non-persistent oils. Approach the streams and intertidal areas on rising tide. Replace as necessary to maximize oil recovery.
		N/A Testing Date	Tested	
 FO-04	Contain and recover spilled oil on the water in the offshore & nearshore environment	1 or more onwater skimming systems		Deploy on-water recovery task force(s) in configuration suitable for types of vessels used and sea conditions, with skimming system(s) and temporary storage for recovered oil and water. Location not exact, will move to chase oil.
		N/A Testing Date	Tested	
 SR-05	Remove spilled oil that has been diverted to a designated recovery site accessible from shore	2 skimming system 2 storage tank or bladder 2 hoses, pumps, fittings	2 shore responders	Set up shoreside recovery tactic at general location depicted on map. Some access points located at private residences. Access may be difficult
		N/A Testing Date	Tested	

Local contacts

Barnstable Harbormaster	(508) 790-6272
Barnstable-Fire	(508) 362-3312
Yarmouth-Fire	(508) 398-2211
Yarmouth-DNR	(508) 760-4800
Yarmouth-Oil Spill Coordinator	(508) 760-4800
USFWS	(413) 539-3194



Barnstable Harbor looking south toward boat basin and Maraspin Creek

Resources Protected

Marine Mammals	Seals
Fish	Shellfish, finfish
Invertebrates	None identified
Birds	Waterfowl concentration,
Threat/End. Species	None identified
Cultural	None identified
Subsistence	None identified
Human Use	Commercial boat harbor, 50+ aquaculture grants, high-use recreation area
Commercial Fishing	None identified
Land Management	ACEC
Coastal Habitat	Marsh, sheltered tidal flats



Barnstable Boat Basin and bridge looking south

Special Considerations & Navigational Hazards

Use extreme caution. Shoal waters with numerous reefs rocks & continually shifting sand bars. Currents and winds are locally variable and can create dangerous operating environments. Vessel operators should have local knowledge.