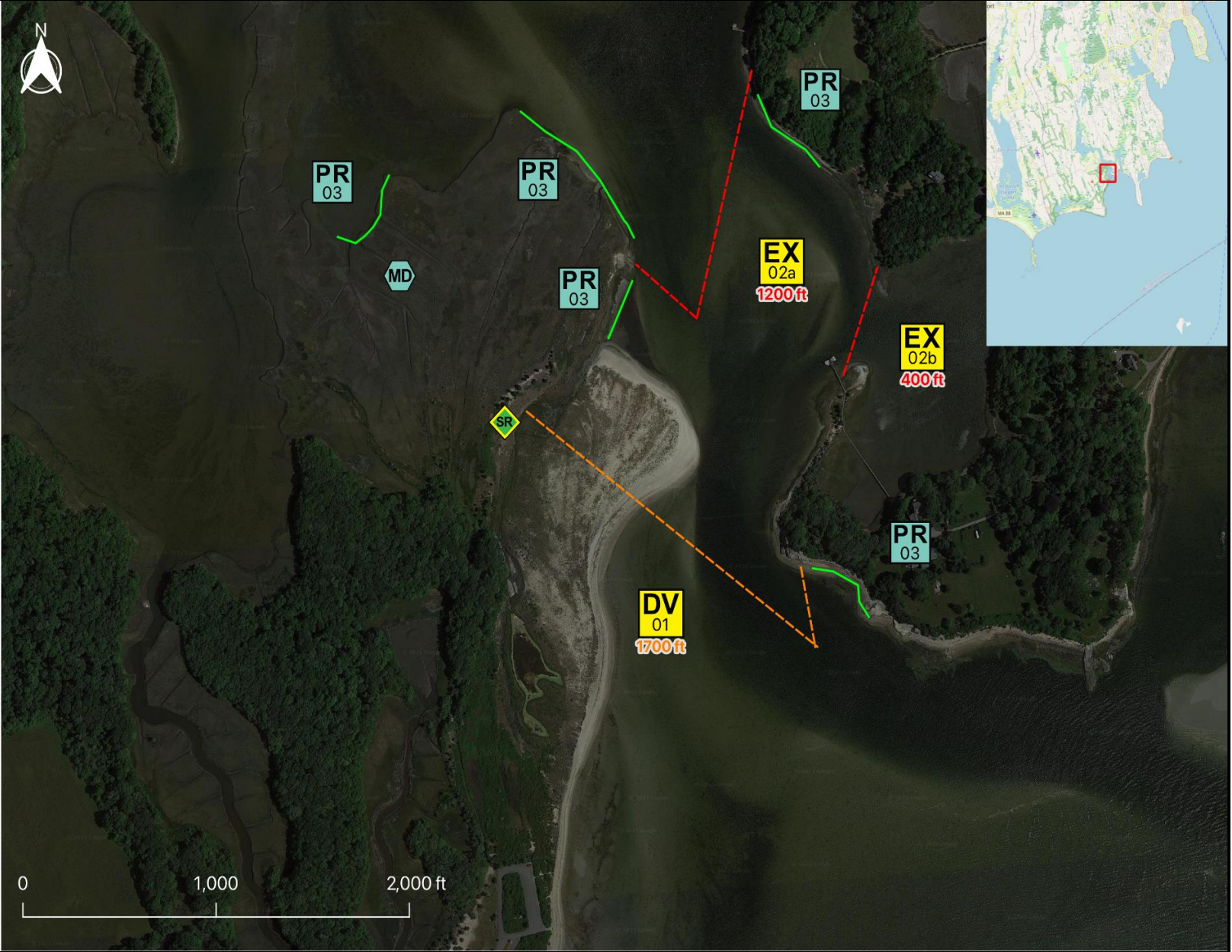


Tactics Legend

- DF** Deflection Booming
- DV** Diversion Booming
- EX** Exclusion Booming
- FO** Free Oil Recovery
- PR** Passive Recovery
- SR** Shoreside Recovery
- S** Staging Area
-  Boat Ramp
- BB** Beach Berm
- TG** Tide Gate
-  Protected-Water Boom
-  Open-Water Boom
-  Snare/ Sorbent Boom



Equipment - All Tactics

Boom(ft)	3300
Marine anchors	18
Shore anchors	6
Sorbent Boom(ft)	2000
FO Recovery Sys	0
Shore Responders	2
Boat Responders	6
Boats	2

Response Trailer, Tactics Deployment, and Responder Safety Information

A total of **4** state response trailers are required to implement all the tactics in this GRS. Responders should always consider on-scene conditions before deploying GRP tactics. Tactics may not be safe or effective under certain conditions. Responder safety should always be the first priority.

Location










Latitude: 41°31'57" N
Longitude: 70°58'46" W
NOAA Chart # 13229

Version

2/15/2023

Geographic Response Strategy

Slocum River System BB04

Tactic #	Purpose	Response Equipment	Deployment Resources	Deployment Notes
DV-01 	Redirect spilled oil from one location or direction of travel to a specific site for recovery.	1700 ft open water boom 9 marine anchor system 2 shoreline anchor system	2 shore responders 2 response boats 6 boat responders	Tend through tidal changes. Deploy boom as depicted to divert incoming oil to the collection site. Anchor every 200-300'. Adjust angle as necessary to reduce entrainment. Set up shoreside recovery and tend throughout tide. Deploy shoreside anchor first. 36" boom staged in New Bedford and MMA. 42" boom staged at USCG Base Cape Cod. Contact MassDEP to access.
		N/A	Testing Date	
EX-02a 	Prohibit oil slicks from entering a sensitive area	1200 ft protected water boom 7 marine anchor system 2 shoreline anchor system	2 shore responders 2 response boats 6 boat responders	Tend through tidal changes. Deploy boom as depicted to exclude oil from sensitive areas. Anchor every 200-300'. Not tide dependent. Deploy shoreside anchor first. Readjust boom angle as needed to reduce entrainment
		N/A	Testing Date	
EX-02b 	Prohibit oil slicks from entering a sensitive area	400 ft protected water boom 2 marine anchor system 2 shoreline anchor system	2 shore responders 1 response boats 3 boat responders	Tend through tidal changes. Deploy boom as depicted to exclude oil from sensitive areas. Anchor every 200-300'. Not tide dependent. Deploy shoreside anchor first.
		N/A	Testing Date	
PR-03 	Remove spilled oil by collecting it in a sorbent material	400 ft sorbent boom 400 ft sorbent pom-poms 11 anchor stakes	2 shore responders	Place and stake snare or sorbent boom in areas that are likely to pool and collect oil and across the mouths of the streams and intertidal areas. Use snare boom for persistent oils and sorbent boom for non-persistent oils. Approach the streams and intertidal areas on rising tide. Replace as necessary to maximize oil recovery.
		N/A	Testing Date	
PR-03 	Remove spilled oil by collecting it in a sorbent material	200 ft sorbent boom 200 ft sorbent pom-poms 6 anchor stakes	2 shore responders	Place and stake snare or sorbent boom in areas that are likely to pool and collect oil and across the mouths of the streams and intertidal areas. Use snare boom for persistent oils and sorbent boom for non-persistent oils. Approach the streams and intertidal areas on rising tide. Replace as necessary to maximize oil recovery.
		N/A	Testing Date	
PR-03 	Remove spilled oil by collecting it in a sorbent material	400 ft sorbent boom 400 ft sorbent pom-poms 11 anchor stakes	2 shore responders	Place and stake snare or sorbent boom in areas that are likely to pool and collect oil and across the mouths of the streams and intertidal areas. Use snare boom for persistent oils and sorbent boom for non-persistent oils. Approach the streams and intertidal areas on rising tide. Replace as necessary to maximize oil recovery.
		N/A	Testing Date	
PR-03 	Remove spilled oil by collecting it in a sorbent material	600 ft sorbent boom 600 ft sorbent pom-poms 17 anchor stakes	2 shore responders	Place and stake snare or sorbent boom in areas that are likely to pool and collect oil and across the mouths of the streams and intertidal areas. Use snare boom for persistent oils and sorbent boom for non-persistent oils. Approach the streams and intertidal areas on rising tide. Replace as necessary to maximize oil recovery.
		N/A	Testing Date	
PR-03 	Remove spilled oil by collecting it in a sorbent material	400 ft sorbent boom 400 ft sorbent pom-poms 11 anchor stakes	2 shore responders	Place and stake snare or sorbent boom in areas that are likely to pool and collect oil and across the mouths of the streams and intertidal areas. Use snare boom for persistent oils and sorbent boom for non-persistent oils. Approach the streams and intertidal areas on rising tide. Replace as necessary to maximize oil recovery.
		N/A	Testing Date	
SR-04 	Remove spilled oil that has been diverted to a designated recovery site accessible from shore	1 skimming system 1 storage tank or bladder 1 hoses, pumps, fittings	2 shore responders	Set up shoreside recovery tactic at general location depicted on map. Some access points located at private residences. Access may be difficult.
		N/A	Testing Date	

Local contacts

Environmental Affairs Coordinator	(508) 910-1822
Harbor Master	(508) 999-0759
Massachusetts Department of Fish and Wildlife	(508) 792-7270
Demarest Lloyd State Park (MA DEM)☒	(508) 636-8816
Massachusetts Audubon (Westport MA)	(508) 636-2497
The Coalition for Buzzards Bay	(508) 999-6363



Slocum River Inlet looking east near low tide on 30 May 2004. (RPI photo.)

Resources Protected

Marine Mammals	None identified
Fish	Shellfish, finfish
Invertebrates	None identified
Birds	Waterfowl concentration, Piping Plover (state threatened)
Threat/End. Species	None identified
Cultural	None identified
Subsistence	None identified
Human Use	Recreational Beaches, private docks, Demarest Lloyd Memorial State Park
Commercial Fishing	None identified
Land Management	None identified
Coastal Habitat	Extensive marsh system, marsh grasses, eel grass beds, sand and cobble beaches



View of river entrance looking east at low tide on 29 May 2004. (RPI photo.)

Special Considerations & Navigational Hazards

Maximum estimated current. 2.0 kts.