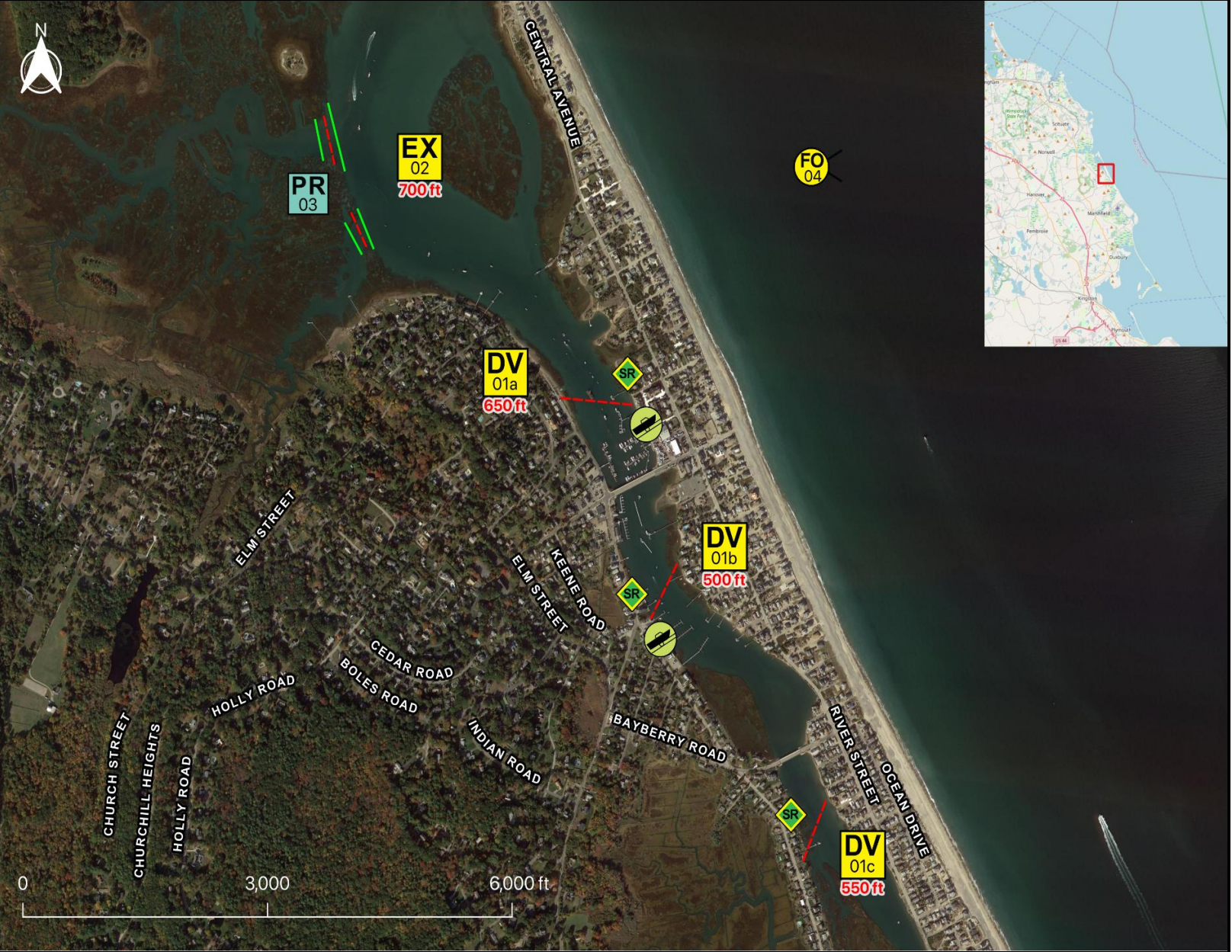


Tactics Legend

- DF** Deflection Booming
- DV** Diversion Booming
- EX** Exclusion Booming
- FO** Free Oil Recovery
- PR** Passive Recovery
- SR** Shoreside Recovery
- S** Staging Area
-  Boat Ramp
- BB** Beach Berm
- TG** Tide Gate
-  Protected-Water Boom
-  Open-Water Boom
-  Snare/ Sorbent Boom



Equipment - All Tactics

Boom(ft)	2400
Marine anchors	13
Shore anchors	8
Sorbent Boom(ft)	2200
FO Recovery Sys	1
Shore Responders	2
Boat Responders	3
Boats	2

Version
2/22/2022

Response Trailer, Tactics Deployment, and Responder Safety Information








A total of **3** state response trailers are required to implement all the tactics in this GRS. Responders should always consider on-scene conditions before deploying GRP tactics. Tactics may not be safe or effective under certain conditions. Responder safety should always be the first priority.

Location

Latitude: 42°8'13" N
Longitude: 70°41'37" W
NOAA Chart # 13267

Geographic Response Strategy

South River SS07

Tactic #	Purpose	Response Equipment	Deployment Resources	Deployment Notes
DV-01a 	Redirect spilled oil from one location or direction of travel to a specific site for recovery.	650 ft protected water boom 3 marine anchor system 4 shoreline anchor system	2 shore responders 1 response boats 3 boat responders	Tend through tidal changes. Deploy boom as depicted to divert incoming oil to the collection site. Anchor every 200-300'. Adjust angle as necessary to reduce entrainment. Set up shoreside recovery and tend throughout tide. Deploy shoreside anchor first.
		N/A	Testing Date	
DV-01b 	Redirect spilled oil from one location or direction of travel to a specific site for recovery.	500 ft protected water boom 3 marine anchor system 4 shoreline anchor system	2 shore responders 1 response boats 3 boat responders	Tend through tidal changes. Deploy boom as depicted to divert incoming oil to the collection site. Anchor every 200-300'. Adjust angle as necessary to reduce entrainment. Set up shoreside recovery and tend throughout tide. Deploy shoreside anchor first.
		N/A	Testing Date	
DV-01c 	Redirect spilled oil from one location or direction of travel to a specific site for recovery.	550 ft protected water boom 3 marine anchor system 4 shoreline anchor system	2 shore responders 1 response boats 3 boat responders	Tend through tidal changes. Deploy boom as depicted to divert incoming oil to the collection site. Anchor every 200-300'. Adjust angle as necessary to reduce entrainment. Set up shoreside recovery and tend throughout tide. Deploy shoreside anchor first.
		N/A	Testing Date	
EX-02 	Prohibit oil slicks from entering a sensitive area	700 ft protected water boom 4 marine anchor system 4 shoreline anchor system	2 shore responders 1 response boats 3 boat responders	Tend through tidal changes. Deploy boom as depicted to exclude oil from sensitive areas. Anchor every 200-300'. Not tide dependent Deploy shoreside anchor first.
		N/A	Testing Date	
PR-03 	Remove spilled oil by collecting it in a sorbent material	2200 ft sorbent boom 2200 ft sorbent pom-poms 63 anchor stakes	2 shore responders	Place and stake snare or sorbent boom in areas that are likely to pool and collect oil and across the mouths of the streams and intertidal areas. Use snare boom for persistent oils and sorbent boom for non-persistent oils. Approach the streams and intertidal areas on rising tide. Replace as necessary to maximize oil recovery.
		N/A	Testing Date	
FO-04 	Contain and recover spilled oil on the water in the offshore & nearshore environment	1 or more onwater skimming systems		Deploy on-water recovery task force(s) in configuration suitable for types of vessels used and sea conditions, with skimming system(s) and temporary storage for recovered oil and water. Location not exact, will move to chase oil.
		N/A	Testing Date	
SR-05 	Remove spilled oil that has been diverted to a designated recovery site accessible from shore	3 skimming system 3 storage tank or bladder 3 hoses, pumps, fittings	2 shore responders	Set up shoreside recovery tactic at general location depicted on map. Some access points located at private residences. Access may be difficult
		N/A	Testing Date	

Local contacts

Marshfield Conservation Commission	781-834-5573
Marshfield Emergency Management Agency	781-837-7100
Marshfield Fire Dept	781-837-1315
Marshfield Harbormaster	781-834-5541
Mass. Dept of Environmental Protection (24 Hours)	888-304-1133
North and South Rivers Watershed Association	781-659-8168
U.S. Coast Guard (24 Hours)	617-223-5750



View looking north towards DV-01a and the boat ramp at Humarock Marine Services

Resources Protected

Marine Mammals	None identified
Fish	Anadromous Fish, Finfish
Invertebrates	Lobster, crab, shrimp
Birds	Shorebirds, Seabirds
Threat/End. Species	None identified
Cultural	None identified
Subsistence	None identified
Human Use	Marina
Commercial Fishing	None identified
Land Management	None identified
Coastal Habitat	Beach, Marsh, Tidal Flats



View looking north towards DV-01b

Special Considerations & Navigational Hazards

South River is a shellfishing area. Vessel operators should have local knowledge.