

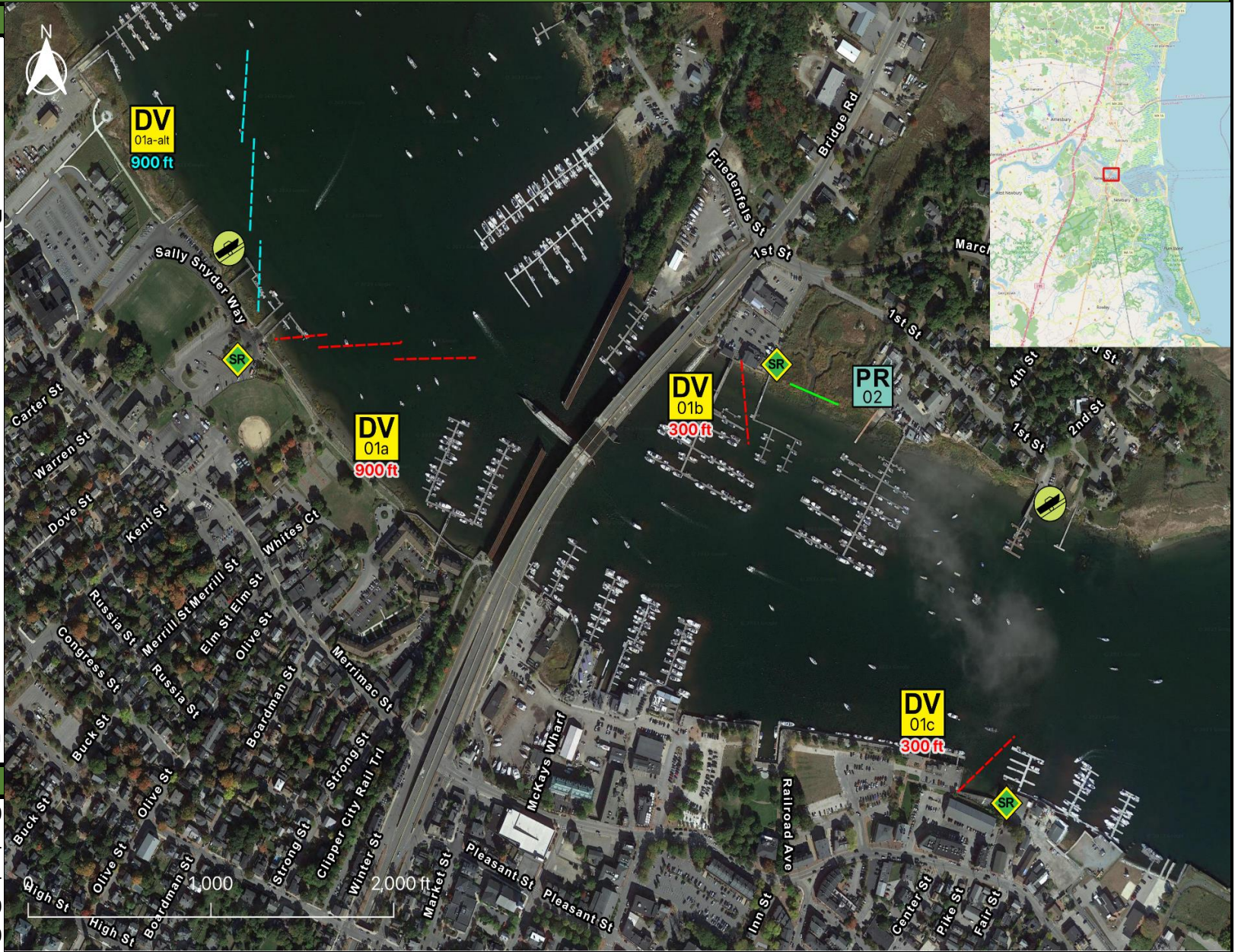
Tactics Legend

- DF** Deflection Booming
- DV** Diversion Booming
- EX** Exclusion Booming
- FO** Free Oil Recovery
- PR** Passive Recovery
- SR** Shoreside Recovery
- S** Staging Area
-  Boat Ramp
- BB** Beach Berm
- TG** Tide Gate
-  Protected-Water Boom
-  Open-Water Boom
-  Snare/ Sorbent Boom

Equipment - All Tactics

Boom(ft)	2400
Marine anchors	14
Shore anchors	4
Sorbent Boom(ft)	200
FO Recovery Sys	0
Shore Responders	2
Boat Responders	3
Boats	2

Version
12/31/25



Response Trailer, Tactics Deployment, and Responder Safety Information







A total of **3** state response trailers are required to implement all the tactics in this GRS. Responders should always consider on-scene conditions before deploying GRP tactics. Tactics may not be safe or effective under certain conditions. Responder safety should always be the first priority.

Location

Latitude: 42°48'56" N
Longitude: 70°52'21" W
NOAA Chart # 13282

Geographic Response Strategy

Newburyport NS02A

Tactic #	Purpose	Response Equipment	Deployment Resources	Deployment Notes
DV-01a 	Redirect spilled oil from one location or direction of travel to a specific site for recovery.	900 ft protected water boom 5 marine anchor system 1 shoreline anchor system	2 shore responders 1 response boats 3 boat responders	Tend through tidal changes. Deploy boom as depicted to divert incoming oil to the collection site. Anchor every 200-300'. Adjust angle as necessary to reduce entrainment. Set up shoreside recovery and tend throughout tide. Deploy shoreside anchor first.
		5/15/2025	Testing Date	
DV-01a-alt 	Redirect spilled oil from one location or direction of travel to a specific site for recovery.	900 ft protected water boom 5 marine anchor system 1 shoreline anchor system	2 shore responders 1 response boats 3 boat responders	Tend through tidal changes. Deploy boom as depicted to divert incoming oil to the collection site. Anchor every 200-300'. Adjust angle as necessary to reduce entrainment. Set up shoreside recovery and tend throughout tide. Deploy shoreside anchor first. Alternate deployment with tide - reset during slack.
		10/9/2012	Testing Date	
DV-01b 	Redirect spilled oil from one location or direction of travel to a specific site for recovery.	300 ft protected water boom 2 marine anchor system 1 shoreline anchor system	2 shore responders 1 response boats 3 boat responders	Tend through tidal changes. Deploy boom as depicted to divert incoming oil to the collection site. Anchor every 200-300'. Adjust angle as necessary to reduce entrainment. Set up shoreside recovery and tend throughout tide. Deploy shoreside anchor first.
			Testing Date	
DV-01c 	Redirect spilled oil from one location or direction of travel to a specific site for recovery.	300 ft protected water boom 2 marine anchor system 1 shoreline anchor system	2 shore responders 1 response boats 3 boat responders	Tend through tidal changes. Deploy boom as depicted to divert incoming oil to the collection site. Anchor every 200-300'. Adjust angle as necessary to reduce entrainment. Set up shoreside recovery and tend throughout tide. Deploy shoreside anchor first.
			Testing Date	
PR-02 	Remove spilled oil by collecting it in a sorbent material	200 ft sorbent boom 200 ft sorbent pom-poms 6 anchor stakes	2 shore responders	Place and stake snare or sorbent boom in areas that are likely to pool and collect oil and across the mouths of the streams and intertidal areas. Use snare boom for persistent oils and sorbent boom for non-persistent oils. Approach the streams and intertidal areas on rising tide. Replace as necessary to maximize oil recovery.
		N/A	Testing Date	
SR-03 	Remove spilled oil that has been diverted to a designated recovery site accessible from shore	3 skimming system 3 storage tank or bladder 3 hoses, pumps, fittings	2 shore responders	Set up shoreside recovery tactic at general location depicted on map. Some access points located at private residences. Access may be difficult.
		N/A	Testing Date	

Local contacts

Newburyport Fire Department	978-465-4427
Newburyport Harbormaster	978-462-3746
Salisbury Fire Department	978-465-3631
Salisbury Harbormaster	978-499-0740
Mass Bays Estuary Assn	978-374-0519
USCG Station Merrimack	978-462-3428
Mass Division of Marine Fisheries	617-626-1520
Environmental Police	800-632-8075



Cushman Park at high tide on 20 May 2009. Site of DV-01a

Resources Protected

Marine Mammals	None identified
Fish	Anadromous, finfish
Invertebrates	Shellfish, Crab, Shrimp
Birds	Bald Eagle, Seabirds, Roseate Tern
Threat/End. Species	None identified
Cultural	None identified
Subsistence	None identified
Human Use	Boat Ramps, Marinas
Commercial Fishing	None identified
Land Management	None identified
Coastal Habitat	Marsh/Swamp, Tidal Flats, Riprap



Newburyport waterfront looking south at high tide on 20 May 2009.

Special Considerations & Navigational Hazards

Two marine fueling stations and USCG station. Tidal range 7-10 ft. Extensive mud flats at low tide. Maximum currents of 3-4 kts. Surface current tends to flow counter clockwise off the water street site as it meets the outgoing freshwater river current. Tactic DV01a extends into active boat channel and extra caution should be taken to avoid nearby vessel traffic.

Tactics Legend

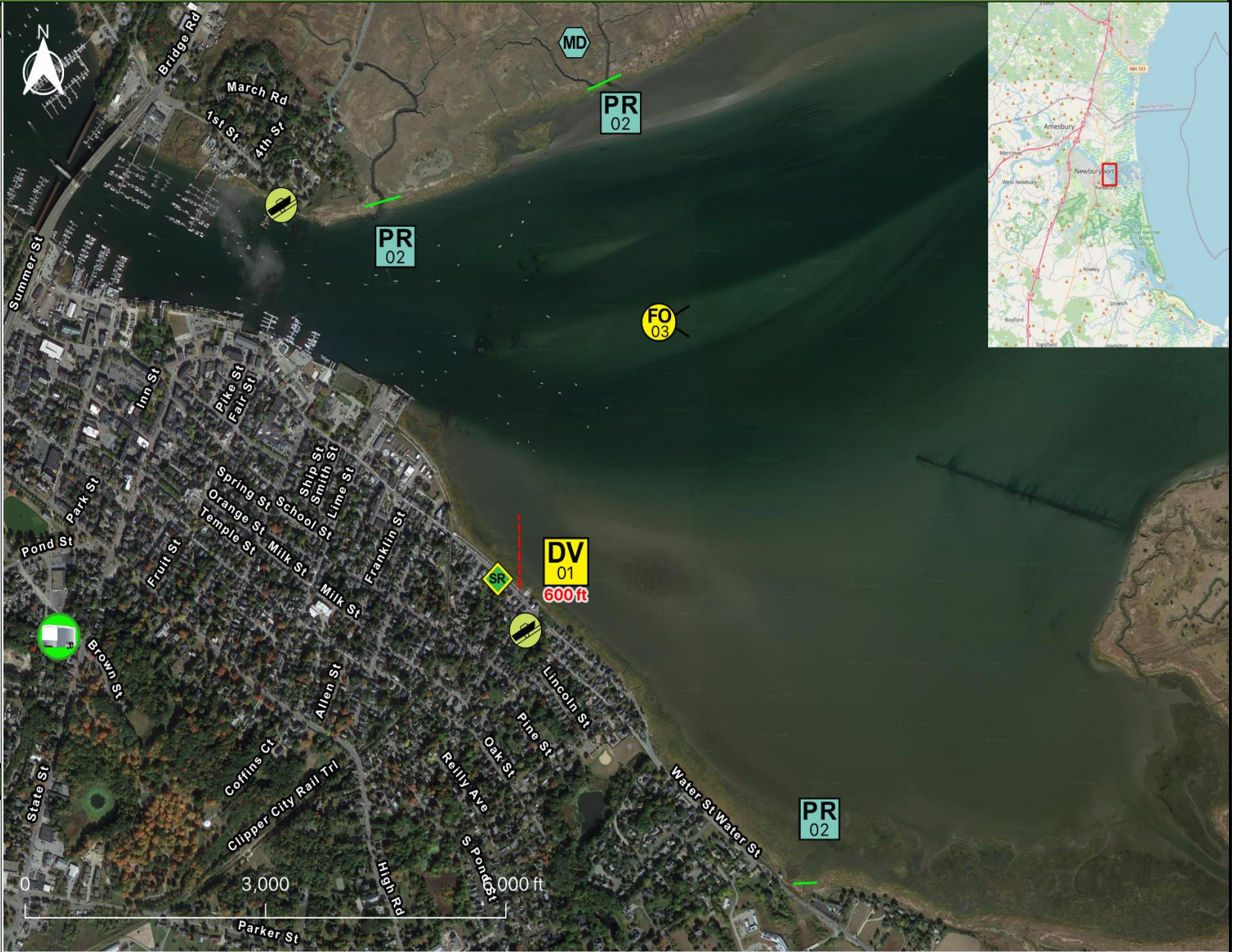
- DF** Deflection Booming
- DV** Diversion Booming
- EX** Exclusion Booming
- FO** Free Oil Recovery
- PR** Passive Recovery
- SR** Shoreside Recovery
- S** Staging Area
-  Boat Ramp
- BB** Beach Berm
- TG** Tide Gate
-  Protected-Water Boom
-  Open-Water Boom
-  Snare/ Sorbent Boom

Equipment - All Tactics

Boom(ft)	600
Marine anchors	3
Shore anchors	1
Sorbent Boom(ft)	800
FO Recovery Sys	1
Shore Responders	2
Boat Responders	3
Boats	2

Version

12/31/25



Response Trailer, Tactics Deployment, and Responder Safety Information







A total of 1 state response trailers are required to implement all the tactics in this GRS.
 Responders should always consider on-scene conditions before deploying GRP tactics.
 Tactics may not be safe or effective under certain conditions.
 Responder safety should always be the first priority.

Location

Latitude: 42°48'33" N
Longitude: 70°51'16" W
NOAA Chart # 13282

Geographic Response Strategy

Newburyport NS02B

Tactic #	Purpose	Response Equipment	Deployment Resources	Deployment Notes
DV-01 	Redirect spilled oil from one location or direction of travel to a specific site for recovery.	600 ft protected water boom 3 marine anchor system 1 shoreline anchor system	2 shore responders 1 response boats 3 boat responders	Tend through tidal changes. Deploy boom as depicted to divert incoming oil to the collection site. Anchor every 200-300'. Adjust angle as necessary to reduce entrainment. Set up shoreside recovery and tend throughout tide. Deploy shoreside anchor first.
		N/A	Testing Date	
PR-02 	Remove spilled oil by collecting it in a sorbent material	300 ft sorbent boom 300 ft sorbent pom-poms 9 anchor stakes	2 shore responders	Place and stake snare or sorbent boom in areas that are likely to pool and collect oil and across the mouths of the streams and intertidal areas. Use snare boom for persistent oils and sorbent boom for non-persistent oils. Approach the streams and intertidal areas on rising tide. Replace as necessary to maximize oil recovery.
		N/A	Testing Date	
PR-02 	Remove spilled oil by collecting it in a sorbent material	300 ft sorbent boom 300 ft sorbent pom-poms 9 anchor stakes	2 shore responders	Place and stake snare or sorbent boom in areas that are likely to pool and collect oil and across the mouths of the streams and intertidal areas. Use snare boom for persistent oils and sorbent boom for non-persistent oils. Approach the streams and intertidal areas on rising tide. Replace as necessary to maximize oil recovery.
		N/A	Testing Date	
PR-02 	Remove spilled oil by collecting it in a sorbent material	200 ft sorbent boom 200 ft sorbent pom-poms 6 anchor stakes	2 shore responders	Place and stake snare or sorbent boom in areas that are likely to pool and collect oil and across the mouths of the streams and intertidal areas. Use snare boom for persistent oils and sorbent boom for non-persistent oils. Approach the streams and intertidal areas on rising tide. Replace as necessary to maximize oil recovery.
		N/A	Testing Date	
FO-03 	Contain and recover spilled oil on the water in the offshore & nearshore environment	1 or more onwater skimming systems		Deploy on-water recovery task force(s) in configuration suitable for types of vessels used and sea conditions, with skimming system(s) and temporary storage for recovered oil and water. Location not exact, will move to chase oil.
		N/A	Testing Date	
SR-04 	Remove spilled oil that has been diverted to a designated recovery site accessible from shore	1 skimming system 1 storage tank or bladder 1 hoses, pumps, fittings	2 shore responders	Set up shoreside recovery tactic at general location depicted on map. Some access points located at private residences. Access may be difficult.
		N/A	Testing Date	

Local contacts

Newburyport Fire Department	978-465-4427
Newburyport Harbormaster	978-462-3746
Salisbury Fire Department	978-465-3631
Salisbury Harbormaster	978-499-0740
Mass Bays Estuary Assn	978-374-0519
USCG Station Merrimack	978-462-3428
Mass Division of Marine Fisheries	617-626-1520
Environmental Police	800-632-8075



Cushman Park at high tide on 20 May 2009. Site of DV-01a

Resources Protected

Marine Mammals	None identified
Fish	Anadromous, finfish
Invertebrates	Shellfish, Crab, Shrimp
Birds	Bald Eagle, Seabirds, Roseate Tern
Threat/End. Species	None identified
Cultural	None identified
Subsistence	None identified
Human Use	Boat Ramps, Marinas
Commercial Fishing	None identified
Land Management	None identified
Coastal Habitat	Marsh/Swamp, Tidal Flats, Riprap



Newburyport waterfront looking south at high tide on 20 May 2009.

Special Considerations & Navigational Hazards

Two marine fueling stations & USCG station. For DV-01 place a 600ft section of 18" boom to divert oil to collection site. Boom will capture inbound oil that has been diverted by outgoing fresh water current and/or will capture oil on an outbound tide. Set anchors every 200 ft. Tidal range 7-10 ft. Extensive mud flats at low tide. Maximum currents of 3-4 kts. Surface current tends to flow counter clockwise off the water street site as it meets the outgoing freshwater river current.