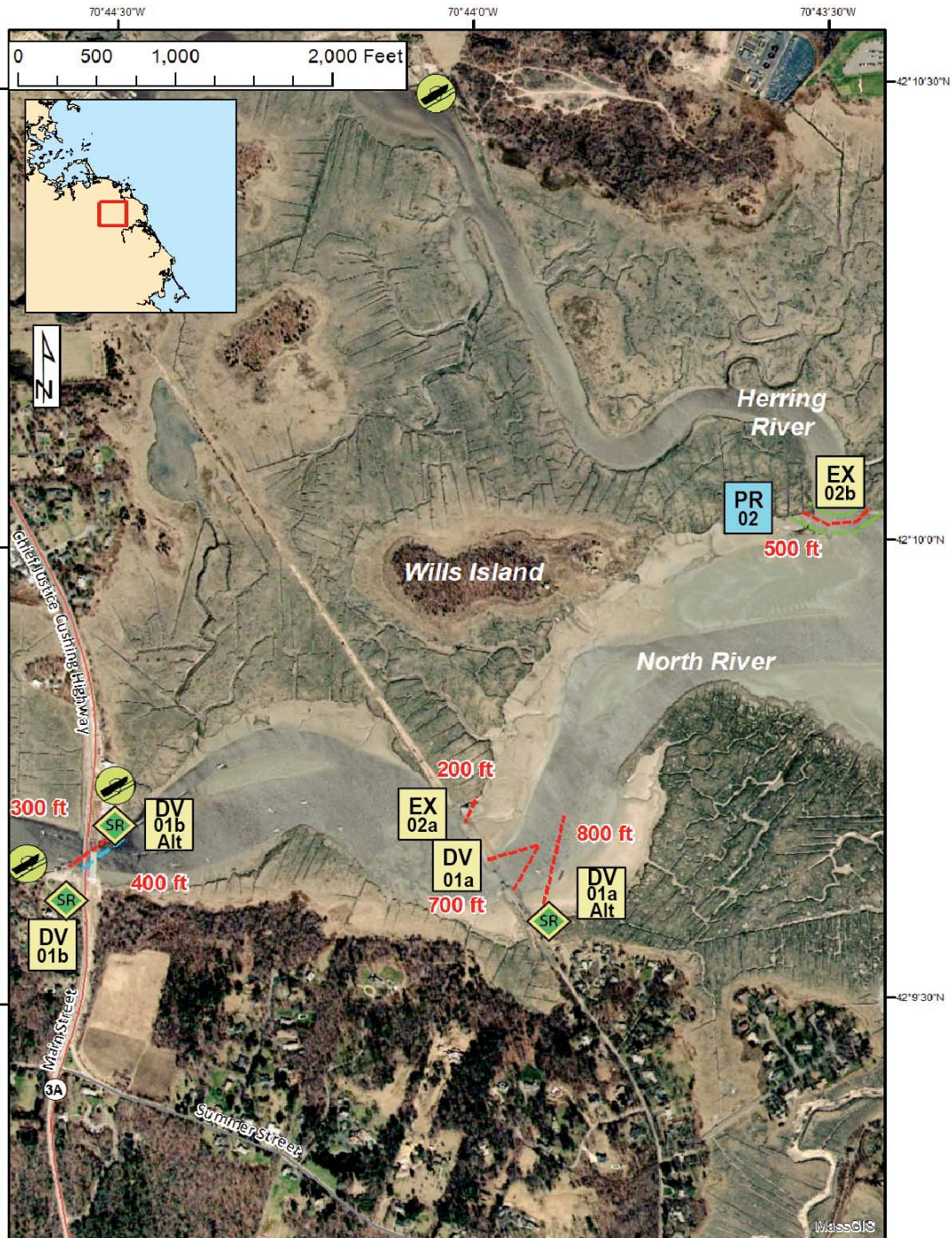




South Shore Geographic Response Plan

North River SS-06



Map Legend			
BB Beach Berm	DF Deflection Booming	TG Tide Gate	
CB Culvert Block	EX Exclusion Booming	Boat Ramp	
DV Diversion Booming	SR Shoreside Recovery	Beach Berm Material	Protected-water Boom (Flood Tide)
PR Passive Recovery	FO Free-oil Recovery	GRP Trailer Locations	Snare or Sorbent Boom

A total of 3 State Response Trailers are required to implement all of the tactics in this GRP.



Responders should always consider on-scene conditions before deploying GRP tactics. Tactics may not be safe or effective under certain conditions. Responder safety should always be the first priority. The strategies contained within this plan have been designed to mitigate a potential off-shore or off-site release that could impact the subject plan area. When responding to other types of spills these tactics will likely require significant modification.





South Shore Geographic Response Plan

North River SS-06

ID	Location and Description	Response Strategy	Implementation
<p>SS-06-01</p> 	<p>a.) Old Railroad Tracks Lat. 42° 9'38.19"N Lon. 70°43'57.51"W</p> <p>alt.) Old Railroad Tracks Lat. 42° 9'38.19"N Lon. 70°43'57.51"W</p> <p>b.) Rt 3A Bridge Lat. 42° 9'39.87"N Lon. 70°44'32.74"W</p>	<p>Divert & Collect On a flooding tide, divert oil to shoreside collection points.</p>	<p>a.) Deploy 700ft of boom in a closed chevron formation at the larger opening in the old railroad tracks located near Damons Point Drive. Shoreside recovery should be set up on the shore by Damons Point Drive.</p> <p>alt.) In the event that the chevron formation is not feasible, deploy the alternate tactic. Deploy 800ft of boom in a single leg from the shore in a northeasterly direction. Depending on conditions, a cascaded formation may be more effective.</p> <p>b.) Deploy 300ft of boom on west side of the Rt 3A Bridge during a flood tide or in the event of a spill that originates from the bridge. Shoreside recovery should be set up at the Roht Marine boat ramp.</p> <p>alt.) Deploy 400ft of boom on east side of the Rt 3A Bridge during an ebb tide or in the event of a spill that originates from the bridge. Shoreside recovery should be set up at the A to Z Boatworks/ North River Marine boat ramp.</p> <p>Deploy anchors every 200ft and tend boom throughout tidal cycle.</p>
<p>SS-06-02</p> 	<p>a.) Smaller opening in railroad tracks Lat. 42° 9'42.16"N Lon. 70°44'1.43"W</p> <p>b.) Herring River Lat. 42°10'4.96"N Lon. 70°43'30.29"W</p>	<p>Exclusion Booming Exclude oil from migrating further upstream in the North River or into Herring River.</p>	<p>a.) Deploy 200ft of boom across the smaller opening in the railroad tracks.</p> <p>b.) Deploy 500ft of boom across the mouth of Herring River. This area has extensive exposed tidal flats at low tide therefore; it would be necessary to deploy sorbent material on each side of the hard boom.</p> <p>Tend boom throughout the tidal cycle.</p> <p>During astronomically high tides, the entire marsh system may be submerged. Anchoring the boom during these high tides would be difficult.</p>





South Shore Geographic Response Plan

North River SS-06

ID	Response Resources	Staging Area Site Access	Resources Protected	Special Considerations
<p>SS-06-01</p> <p style="text-align: center;">DV</p>	<p>Deployment Equipment 1600 ft 18” boom 6 anchor systems 6 anchor stakes 3 shoreside recovery systems Vessels 2 skiffs Personnel/Shift 6-8 total (1 vessel operator + 1 responder per vessel, 4 shoreside responders) Tending Vessels 1 skiff Personnel/Shift 3-4 total (1 vessel operator + 1 responder per vessel, 2 shoreside responders)</p>	<p>The boat ramp located at Roht Marine/Mary’s Marine Livery is at 2205 Massachusetts 3A, Marshfield, MA.</p> <p>The boat ramp located at A to Z Boatworks/North River Marine is at 12 Chief Justice Cushing Highway, Scituate, MA.</p> <p>NOAA 13267</p>	<p>Fish – Anadromous Fish, Fin Fish</p> <p>Invertebrates – Lobster, crab, shrimp</p> <p>Birds – Seabirds, Shorebirds</p> <p>Human Use – Beach, Boat Ramp, Marina, Recreational Fishing</p> <p>Land Mgmt – State Management Area</p> <p>Habitat - Marsh, Tidal Flats</p>	<p>Vessel master should have local knowledge.</p> <p>Consider the time of year and relative presence of recreational boats when preparing to implement these strategies. Consult with the local harbormaster to develop a plan to address the presence of recreational boaters. Consider encouraging the immediate removal of recreational boats from target areas in the event of a spill if time allows.</p> <p>There are strong tidal currents at the opening in the railroad tracks.</p> <p>Tested: DV01b tested 09/24/13</p>
<p>SS-06-02</p> <p style="text-align: center;">EX</p>	<p>Deployment Equipment 700 ft 18” boom 2 anchor systems 4 anchor stakes 1000 ft sorbent material Vessels 2 skiffs Personnel/Shift 6-8 total (1 vessel operator + 1 responder per vessel, 4 shoreside responders) Tending Same as SS-06-01</p>	<p>To access the boat ramp located on the Driftway, turn on to Driftway from Rt 3A.</p>	<p>Same as SS-06-01</p>	<p>Same as SS-06-01</p>





Site Photographs and Contact Information



Boat ramp located at Roht Marine.



View looking north from the end of Damons Point Drive. (DV-01a)



View looking west towards the railroad tracks. (DV-01a & EX-02)



View looking west towards the Rt 3A bridge.

Contacts:

Marshfield Conservation Commission: 781-834-5573
Marshfield Emergency Management Agency: 781-837-7100
Marshfield Fire Dept: 781-837-1315
Marshfield Harbormaster: 781-834-5541
Mass. Dept of Environmental Protection (24 Hours):
888-304-1133
North and South Rivers Watershed Association: 781-659-8168
Scituate Harbormaster: 781-545-2130
Scituate Fire Dept: 781-545-8749
Scituate Conservation Commission: 781-545-8721
U.S. Coast Guard (24 Hours): 617-223-5750

Mutual Aid is available from other communities within the Buzzard's Bay GRP region that have state response trailers. More information can be found on the following MassDEP web site: <http://www.mass.gov/eea/agencies/massdep/cleanup/marine/#5>

Additional information regarding State Response Trailers, including locations and inventories can be found here: <http://www.mass.gov/eea/agencies/massdep/cleanup/marine/oil-spill-training-and-equipment-resources.html>

