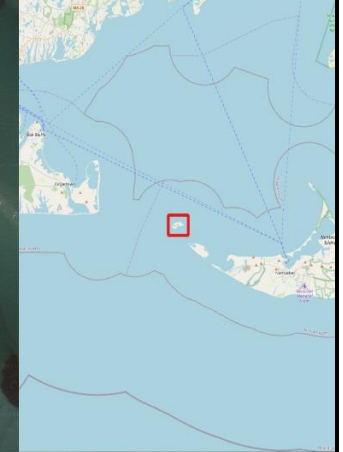


Tactics Legend

- DF** Deflection Booming
- DV** Diversion Booming
- EX** Exclusion Booming
- FO** Free Oil Recovery
- PR** Passive Recovery
- SR** Shoreside Recovery
- S** Staging Area
-  Boat Ramp
- BB** Beach Berm
- TG** Tide Gate
-  Protected-Water Boom
-  Open-Water Boom
-  Snare/ Sorbent Boom



Equipment - All Tactics

Boom(ft)	0
Marine anchors	0
Shore anchors	0
Sorbent Boom(ft)	10500
FO Recovery Sys	2
Shore Responders	2
Boat Responders	2
Boats	2

Response Trailer, Tactics Deployment, and Responder Safety Information

A total of 1 state response trailers are required to implement all the tactics in this GRS. Responders should always consider on-scene conditions before deploying GRP tactics. Tactics may not be safe or effective under certain conditions. Responder safety should always be the first priority.

Location







Latitude: 41°20'7" N
Longitude: 70°17'53" W
NOAA Chart # 13241-1

Version

2/16/2023

Geographic Response Strategy

Muskeget Island CI25

Tactic #	Purpose	Response Equipment	Deployment Resources	Deployment Notes
FO-01 	Contain and recover spilled oil on the water in the offshore & nearshore environment	1 or more onwater skimming systems		Deploy on-water recovery task force(s) in configuration suitable for types of vessels used and sea conditions, with skimming system(s) and temporary storage for recovered oil and water. Location not exact, will move to chase oil.
		N/A	Testing Date	
FO-01 	Contain and recover spilled oil on the water in the offshore & nearshore environment	1 or more onwater skimming systems		Deploy on-water recovery task force(s) in configuration suitable for types of vessels used and sea conditions, with skimming system(s) and temporary storage for recovered oil and water. Location not exact, will move to chase oil.
		N/A	Testing Date	
PR-02 	Remove spilled oil by collecting it in a sorbent material	3100 ft sorbent boom 3100 ft sorbent pom-poms 89 anchor stakes	2 shore responders	Place and stake snare or sorbent boom in areas that are likely to pool and collect oil and across the mouths of the streams and intertidal areas. Use snare boom for persistent oils and sorbent boom for non-persistent oils. Approach the streams and intertidal areas on rising tide. Replace as necessary to maximize oil recovery.
		N/A	Testing Date	
PR-02 	Remove spilled oil by collecting it in a sorbent material	2600 ft sorbent boom 2600 ft sorbent pom-poms 74 anchor stakes	2 shore responders	Place and stake snare or sorbent boom in areas that are likely to pool and collect oil and across the mouths of the streams and intertidal areas. Use snare boom for persistent oils and sorbent boom for non-persistent oils. Approach the streams and intertidal areas on rising tide. Replace as necessary to maximize oil recovery.
		N/A	Testing Date	
PR-02 	Remove spilled oil by collecting it in a sorbent material	2400 ft sorbent boom 2400 ft sorbent pom-poms 69 anchor stakes	2 shore responders	Place and stake snare or sorbent boom in areas that are likely to pool and collect oil and across the mouths of the streams and intertidal areas. Use snare boom for persistent oils and sorbent boom for non-persistent oils. Approach the streams and intertidal areas on rising tide. Replace as necessary to maximize oil recovery.
		N/A	Testing Date	
PR-02 	Remove spilled oil by collecting it in a sorbent material	2400 ft sorbent boom 2400 ft sorbent pom-poms 69 anchor stakes	2 shore responders	Place and stake snare or sorbent boom in areas that are likely to pool and collect oil and across the mouths of the streams and intertidal areas. Use snare boom for persistent oils and sorbent boom for non-persistent oils. Approach the streams and intertidal areas on rising tide. Replace as necessary to maximize oil recovery.
		N/A	Testing Date	

Local contacts

Madaket Harbormaster	(508) 958 1577
Nantucket-Fire	(508) 228-2324
Nantucket-Marine Department	(508) 228 7261
Nantucket Soundkeeper	(508) 775-9767
USFWS	(413) 539-3194



Muskeget Island looking east

Resources Protected

Marine Mammals	Grey seals
Fish	None identified
Invertebrates	None identified
Birds	None identified
Threat/End. Species	Piping Plovers (April 1- August 31), Roseate Terns (foraging mid-July thru Sept 30)
Cultural	None identified
Subsistence	None identified
Human Use	High-use recreational area
Commercial Fishing	None identified
Land Management	None identified
Coastal Habitat	Marsh, dunes



Sandbar northeast of Muskeget Island with seals present

Special Considerations & Navigational Hazards

Use caution in sandy dunes during months when plovers are present. Use caution operating in nearshore areas when Roseate Terns are foraging. Nesting areas may include beaches, sandspits, foredunes, & washover areas in dunes. Consult with USFWS as early as possible regarding shoreline collection areas and access plans. Vessel operators should have local knowledge.