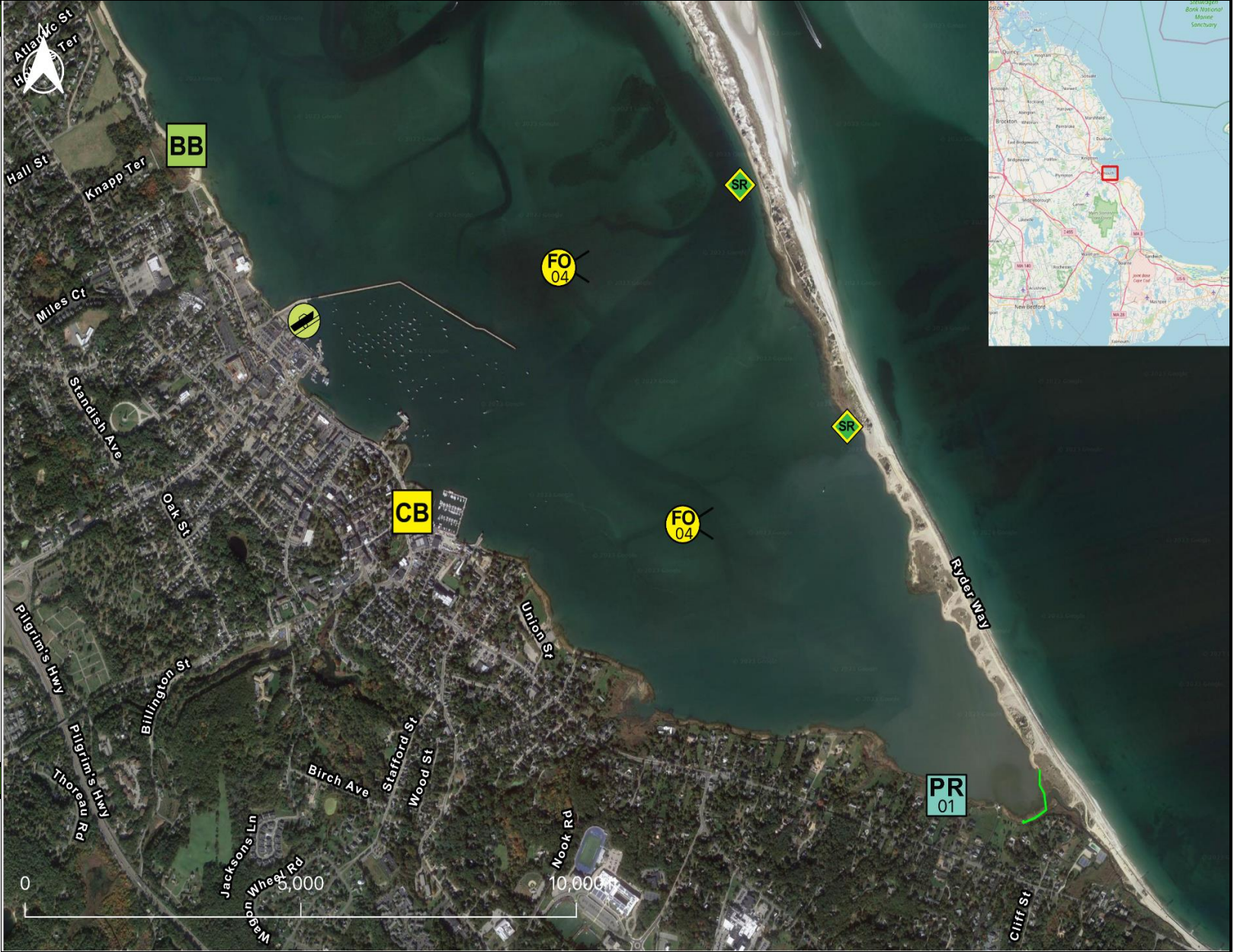


Tactics Legend

- DF** Deflection Booming
- DV** Diversion Booming
- EX** Exclusion Booming
- FO** Free Oil Recovery
- PR** Passive Recovery
- SR** Shoreside Recovery
- S** Staging Area
-  Boat Ramp
- BB** Beach Berm
- TG** Tide Gate
-  Protected-Water Boom
-  Open-Water Boom
-  Snare/ Sorbent Boom



Equipment - All Tactics

Boom(ft)	0
Marine anchors	0
Shore anchors	0
Sorbent Boom(ft)	900
FO Recovery Sys	2
Shore Responders	2
Boat Responders	2
Boats	2

**Version**  
2/15/2023







Response Trailer, Tactics Deployment, and Responder Safety Information

A total of 1 state response trailers are required to implement all the tactics in this GRS.  
 Responders should always consider on-scene conditions before deploying GRP tactics.  
 Tactics may not be safe or effective under certain conditions.  
 Responder safety should always be the first priority.

Location

**Latitude:** 41°57'30" N  
**Longitude:** 70°39'5" W  
**NOAA Chart #** 13253

**Geographic Response Strategy**

Tactic #	Purpose	Response Equipment	Deployment Resources	Deployment Notes
<b>PR-01</b> 	Remove spilled oil by collecting it in a sorbent material	900 ft sorbent boom 900 ft sorbent pom-poms 26 anchor stakes	2 shore responders	Place and stake snare or sorbent boom in areas that are likely to pool and collect oil and across the mouths of the streams and intertidal areas. Use snare boom for persistent oils and sorbent boom for non-persistent oils. Approach the streams and intertidal areas on rising tide. Replace as necessary to maximize oil recovery.
		N/A	Testing Date	
<b>BB-02</b> 	Exclude spilled oil from impacting sensitive areas by constructing a barrier from natural materials	Build a beach berm. Use local beach & inter-tidal bar sediments. Don't destroy any part of foredune. If berm is expected to remain in place for more than a few days, place one or more 20' x 12" pipe in the channel & build berm on top of pipe. Use culvert plugs to control water flow through the pipe. Permitting may be required.		Construction of beach berms typically require the use of heavy equipment and should only be attempted by professional responders. Beach berms should not be constructed without explicit direction from the UC. Permits for earth-moving to construct beach berms are required from state and federal agencies (MADEP, Army Corp. of Eng) and concurrence from Natural Resource Trustee Agencies may also be required.
		N/A	Testing Date	
<b>CB-03</b> 	Prevent oil that has entered drainage systems from impacting waterways and sensitive areas	1 inflatable plug, sand bag, or plywood	2 shore responders	At low tide deploy appropriate size inflatable culvert plug in the culvert. Monitor to ensure blocking integrity. Without culvert plug, place plywood or similar sheeting material across the culvert. Use plastic sheeting to ensure the seal. Stack sandbags against plywood to counter outflow pressure.
		N/A	Testing Date	
<b>FO-04</b> 	Contain and recover spilled oil on the water in the offshore & nearshore environment	1 or more onwater skimming systems		Deploy on-water recovery task force(s) in configuration suitable for types of vessels used and sea conditions, with skimming system(s) and temporary storage for recovered oil and water. Location not exact, will move to chase oil.
		N/A	Testing Date	
<b>FO-04</b> 	Contain and recover spilled oil on the water in the offshore & nearshore environment	1 or more onwater skimming systems		Deploy on-water recovery task force(s) in configuration suitable for types of vessels used and sea conditions, with skimming system(s) and temporary storage for recovered oil and water. Location not exact, will move to chase oil.
		N/A	Testing Date	
<b>SR-05</b> 	Remove spilled oil that has been diverted to a designated recovery site accessible from shore	2 skimming system 2 storage tank or bladder 2 hoses, pumps, fittings	2 shore responders	Set up shoreside recovery tactic at general location depicted on map. Some access points located at private residences. Access may be difficult.
		N/A	Testing Date	



## Geographic Response Strategy

Plymouth SS12

### Local contacts

Mass. Dept of Environmental Protection (24 Hours)	<a href="tel:888-304-1133">888-304-1133</a>
Plymouth Conservation Commission	<a href="tel:508-747-1620">508-747-1620</a>
Plymouth Dept of Emergency Management	<a href="tel:508-833-5801">508-833-5801</a>
Plymouth Environmental Manager	<a href="tel:508-747-1620">508-747-1620 (x134)</a>
Plymouth Fire Dept	<a href="tel:508-830-4213">508-830-4213</a>
Plymouth Harbormaster	<a href="tel:508-830-4182">508-830-4182</a>
U.S. Coast Guard (24 Hours)	<a href="tel:617-223-5750">617-223-5750</a>



*View looking southeast towards the opening of the Eel River. (PR-01)*

### Resources Protected

Marine Mammals	Harbor Seals
Fish	Anadromous Fish
Invertebrates	Lobster, crab, shrimp
Birds	Shorebirds, Seabirds, Nesting Areas
Threat/End. Species	Piping Plover, Roseate Tern
Cultural	<b>None identified</b>
Subsistence	<b>None identified</b>
Human Use	Beach, Boat Ramp, Ferry, Marina, Recreational Fishing, Water Intake
Commercial Fishing	<b>None identified</b>
Land Management	<b>None identified</b>
Coastal Habitat	Beach, Marsh, Rocky, Riprap, Tidal Flats



*Culvert at Water Street (CB-03)*

### Special Considerations & Navigational Hazards

Plovers and Terns nest on Long Beach from May- Sept. Town escort may be necessary to avoid nesting areas. Contact Plymouth Environmental Manager before using the beach. SR: Ryder way is an unpaved road and requires a 4WD vehicle. Vessel operators should have local knowledge.