

Tactics Legend

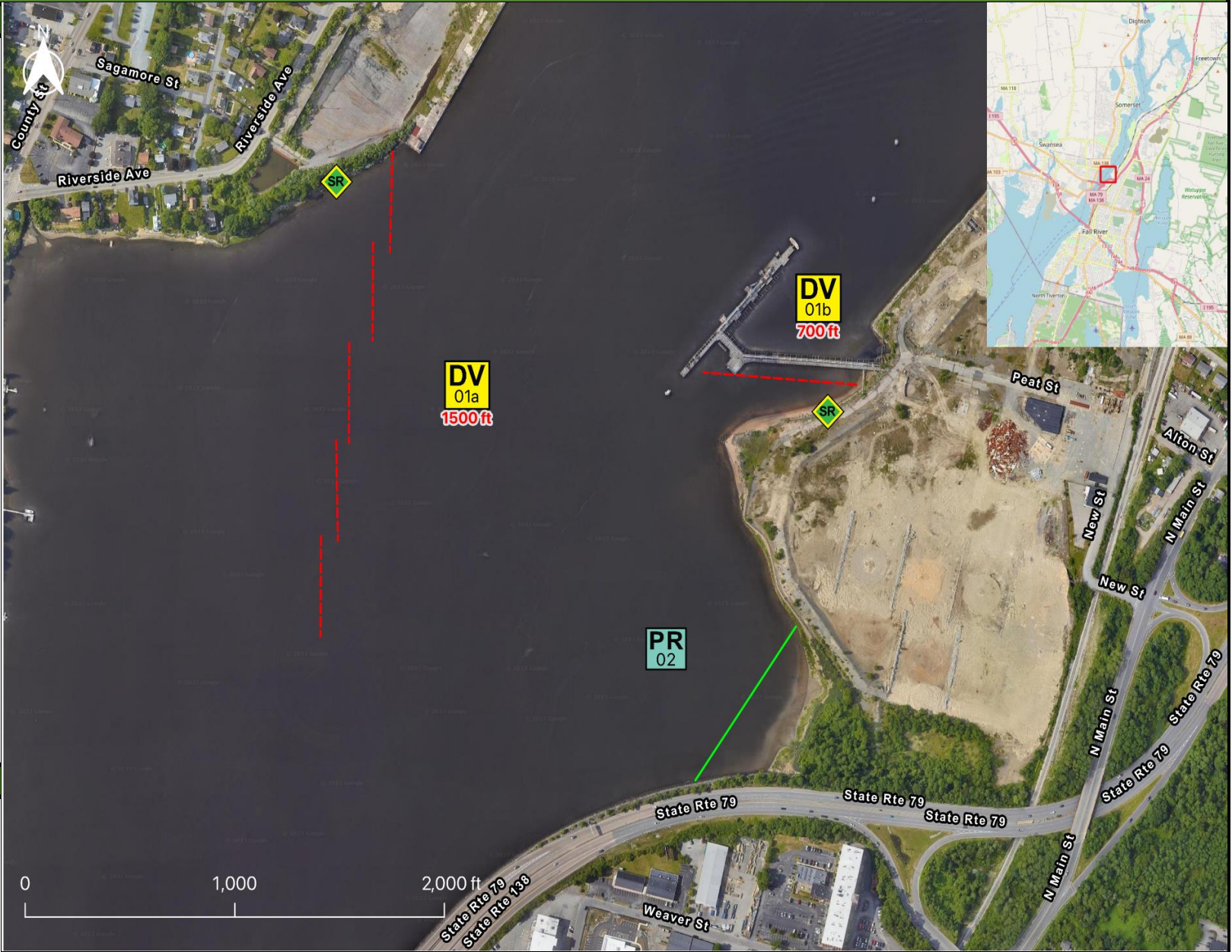
- DF** Deflection Booming
- DV** Diversion Booming
- EX** Exclusion Booming
- FO** Free Oil Recovery
- PR** Passive Recovery
- SR** Shoreside Recovery
- S** Staging Area
-  Boat Ramp
- BB** Beach Berm
- TG** Tide Gate
-  Protected-Water Boom
-  Open-Water Boom
-  Snare/ Sorbent Boom

Equipment - All Tactics

Boom(ft)	2200
Marine anchors	13
Shore anchors	2
Sorbent Boom(ft)	600
FO Recovery Sys	0
Shore Responders	2
Boat Responders	6
Boats	2

Version

2/15/2023



Response Trailer, Tactics Deployment, and Responder Safety Information





A total of **3** state response trailers are required to implement all the tactics in this GRS. Responders should always consider on-scene conditions before deploying GRP tactics. Tactics may not be safe or effective under certain conditions. Responder safety should always be the first priority.

Location

Latitude: 41°43'56" N
Longitude: 71°8'39" W
NOAA Chart # 13226

Geographic Response Strategy

Breeds Cove MHB06

Tactic #	Purpose	Response Equipment	Deployment Resources	Deployment Notes
DV-01a 	Redirect spilled oil from one location or direction of travel to a specific site for recovery.	1500 ft protected water boom 9 marine anchor system 1 shoreline anchor system	2 shore responders 2 response boats 6 boat responders	Tend through tidal changes. Deploy boom as depicted to divert incoming oil to the collection site. Anchor every 200-300'. Adjust angle as necessary to reduce entrainment. Set up shoreside recovery and tend throughout tide. Deploy shoreside anchor first.
		N/A	Testing Date	
DV-01b 	Redirect spilled oil from one location or direction of travel to a specific site for recovery.	700 ft protected water boom 4 marine anchor system 1 shoreline anchor system	2 shore responders 1 response boats 3 boat responders	Tend through tidal changes. Deploy boom as depicted to divert incoming oil to the collection site. Anchor every 200-300'. Adjust angle as necessary to reduce entrainment. Set up shoreside recovery and tend throughout tide. Deploy shoreside anchor first.
		N/A	Testing Date	
PR-02 	Remove spilled oil by collecting it in a sorbent material	600 ft sorbent boom 600 ft sorbent pom-poms 17 anchor stakes	2 shore responders	Place and stake snare or sorbent boom in areas that are likely to pool and collect oil and across the mouths of the streams and intertidal areas. Use snare boom for persistent oils and sorbent boom for non-persistent oils. Approach the streams and intertidal areas on rising tide. Replace as necessary to maximize oil recovery.
		N/A	Testing Date	
SR-03 	Remove spilled oil that has been diverted to a designated recovery site accessible from shore	2 skimming system 2 storage tank or bladder 2 hoses, pumps, fittings	2 shore responders	Set up shoreside recovery tactic at general location depicted on map. Some access points located at private residences. Access may be difficult.
		N/A	Testing Date	

Local contacts

Fall River Fire Department	508-675-7411
Fall River Harbormaster	508-324-2019
Fall River Conservation Commission	508-324-2340
Fall River Dept of Public Works	508-324-2564
Fall River LEPC	508-324-2733
Somerset Fire Department	508-646-2810
Somerset Conservation Commission	508-646-2806
Somerset EMA	508-673-1000
Dominion Energy Terminal	508-646-5000
Mass. Dept of Environmental Protection (24 Hours)	888-304-1133



Site of DV-01b at Breeds Cove

Resources Protected

Marine Mammals	None identified
Fish	Anadromous, Catadromous, Finfish
Invertebrates	Lobster, crab, shrimp, shellfish
Birds	None identified
Threat/End. Species	None identified
Cultural	None identified
Subsistence	None identified
Human Use	Boat Ramp, Marina
Commercial Fishing	None identified
Land Management	Wild and Scenic River
Coastal Habitat	Beach, Marsh/Swamp, Rocky, Tidal Flats, Man-made structures



Site of PR-02 at Weavers Cove. Summer photo showing Marsh grass

Special Considerations & Navigational Hazards

Vessel operators should have local knowledge.