

Tactics Legend

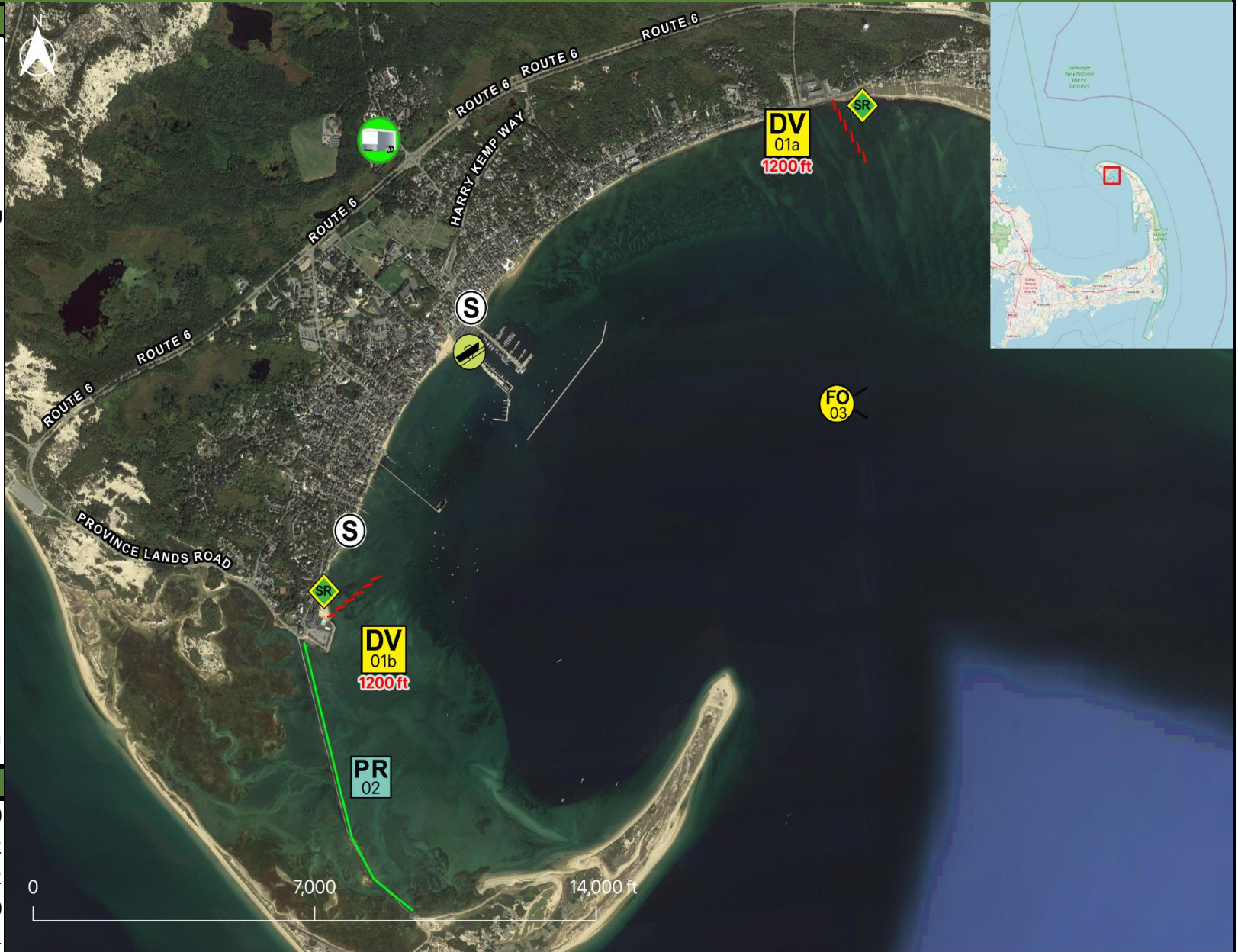
- DF** Deflection Booming
- DV** Diversion Booming
- EX** Exclusion Booming
- FO** Free Oil Recovery
- PR** Passive Recovery
- SR** Shoreside Recovery
- S** Staging Area
-  Boat Ramp
- BB** Beach Berm
- TG** Tide Gate
-  Protected-Water Boom
-  Open-Water Boom
-  Snare/ Sorbent Boom

Equipment - All Tactics

| | |
|------------------|------|
| Boom(ft) | 2400 |
| Marine anchors | 12 |
| Shore anchors | 2 |
| Sorbent Boom(ft) | 5000 |
| FO Recovery Sys | 1 |
| Shore Responders | 2 |
| Boat Responders | 6 |
| Boats | 2 |

Version

10/13/2022



Response Trailer, Tactics Deployment, and Responder Safety Information






A total of **3** state response trailers are required to implement all the tactics in this GRS. Responders should always consider on-scene conditions before deploying GRP tactics. Tactics may not be safe or effective under certain conditions. Responder safety should always be the first priority.

Location

Latitude: 42°2'34" N
Longitude: 70°10'25" W
NOAA Chart # 13249-1

Geographic Response Strategy

Provincetown CI07

| Tactic # | Purpose | Response Equipment | Deployment Resources | Deployment Notes |
|---|--|---|---|---|
| DV-01a  | Redirect spilled oil from one location or direction of travel to a specific site for recovery. | 1200 ft protected water boom 6 marine anchor system 2 shoreline anchor system | 2 shore responders 2 response boats 6 boat responders | Tend through tidal changes. Deploy boom as depicted to divert incoming oil to the collection site. Anchor every 200-300'. Adjust angle as necessary to reduce entrainment. Set up shoreside recovery and tend throughout tide. Deploy shoreside anchor first. |
| | | N/A | Testing Date | |
| DV-01b  | Redirect spilled oil from one location or direction of travel to a specific site for recovery. | 1200 ft protected water boom 6 marine anchor system 2 shoreline anchor system | 2 shore responders 2 response boats 6 boat responders | Tend through tidal changes. Deploy boom as depicted to divert incoming oil to the collection site. Anchor every 200-300'. Adjust angle as necessary to reduce entrainment. Set up shoreside recovery and tend throughout tide. Deploy shoreside anchor first. |
| | | N/A | Testing Date | |
| PR-02  | Remove spilled oil by collecting it in a sorbent material | 5000 ft sorbent boom 5000 ft sorbent pom-poms 143 anchor stakes | 2 shore responders | Place and stake snare or sorbent boom in areas that are likely to pool and collect oil and across the mouths of the streams and intertidal areas. Use snare boom for persistent oils and sorbent boom for non-persistent oils. Approach the streams and intertidal areas on rising tide. Replace as necessary to maximize oil recovery. |
| | | N/A | Testing Date | |
| FO-03  | Contain and recover spilled oil on the water in the offshore & nearshore environment | 1 or more onwater skimming systems | | Deploy on-water recovery task force(s) in configuration suitable for types of vessels used and sea conditions, with skimming system(s) and temporary storage for recovered oil and water. Location not exact, will move to chase oil. |
| | | N/A | Testing Date | |
| SR-04  | Remove spilled oil that has been diverted to a designated recovery site accessible from shore | 2 skimming system 2 storage tank or bladder 2 hoses, pumps, fittings | 2 shore responders | Set up shoreside recovery tactic at general location depicted on map. Some access points located at private residences. Access may be difficult. |
| | | N/A | Testing Date | |

Local contacts

| | |
|---------------------------|---|
| CCNS | (508) 349-3785 |
| Provincetown-Fire | (508) 487-7023 |
| Provincetown-Harbormaster | (508) 487-7030 |
| Provincetown-Shellfish | (508) 487-7030 |
| USFWS | (413) 539-3194 |



Provincetown Harbor looking east

Resources Protected

| | |
|---------------------|---|
| Marine Mammals | Seals |
| Fish | Shellfish, finfish |
| Invertebrates | None identified |
| Birds | Waterfowl concentration |
| Threat/End. Species | Piping Plovers (April 1 - August 31) |
| Cultural | None identified |
| Subsistence | None identified |
| Human Use | Commercial boat harbor, aquaculture, high-use recreation area |
| Commercial Fishing | None identified |
| Land Management | CCNS |
| Coastal Habitat | Marsh, sheltered tidal flats |



Provincetown Harbor looking southeast

Special Considerations & Navigational Hazards

Federal and State listed threatened wildlife may be present particularly from March through August limiting site access especially near Long Point and along Cape Cod Bay beaches. Coordinate with CCNS USFWS and the Mass. Natural Heritage and Endangered Species Program. Use caution in sandy dunes during months when plovers are present. Nesting areas may include beaches sand spits foredunes and washover areas in dunes. Consult with USFWS as early as possible regarding shoreline collection areas and access plans. Vessel operators should have local knowledge.