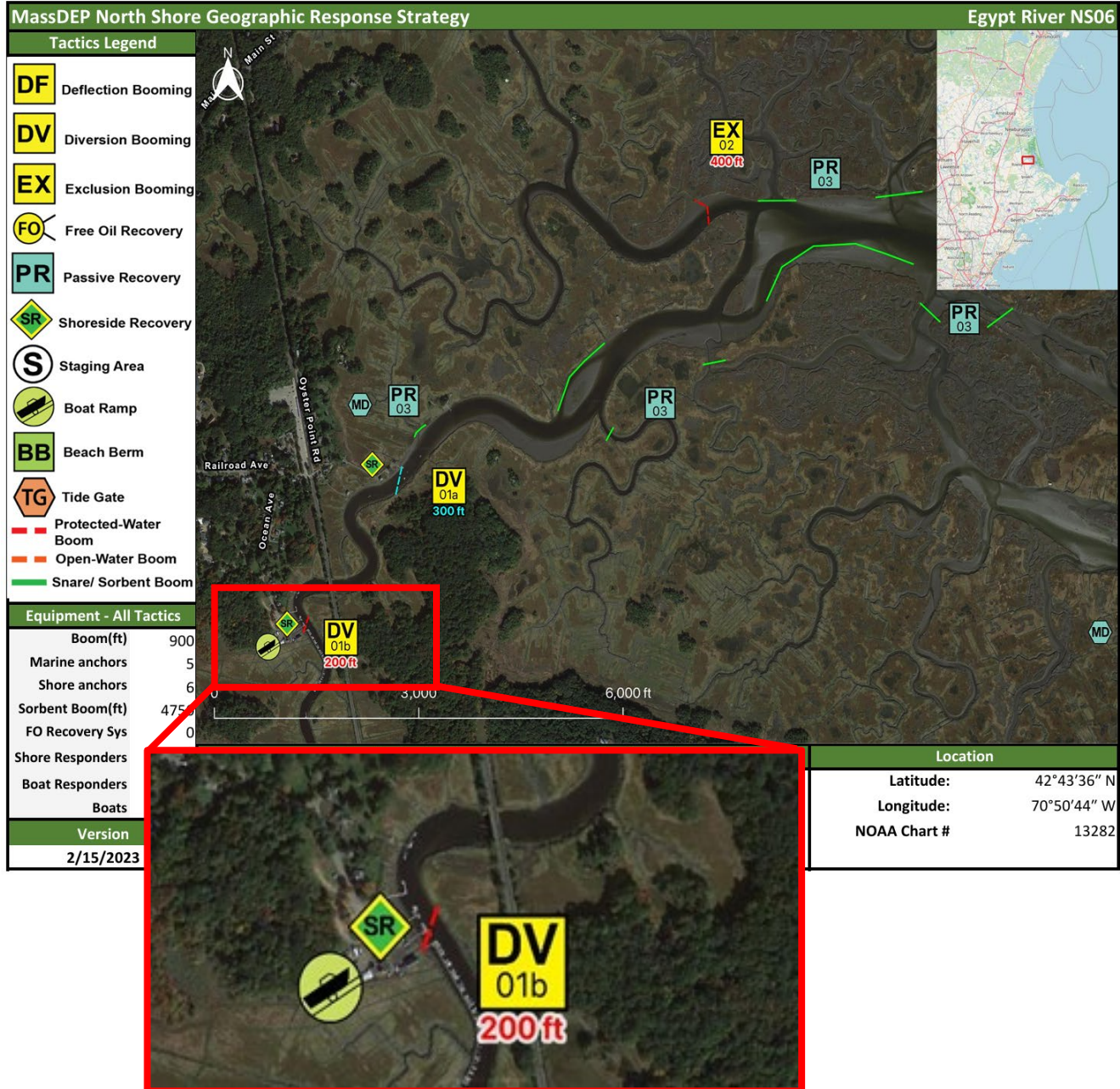


INCIDENT BRIEFING (ICS 201)

1. Incident Name: 2025 Essex/Ipswich/Rowley GRS EX	2. Incident Number: EIR-25	3. Date: 12MAY2025
--	--------------------------------------	------------------------------

4. Tactic Map/FR Deployment Drills



5. Situation Summary and Health and Safety Briefing (for briefings or transfer of command):

An oil spill has occurred that threatens **Egypt River** and the adjacent shorelines. The **Essex, Ipswich, and Rowley** Fire Departments and Harbormasters will utilize various common Geographic Response Strategy (GRS) tactics to protect sensitive resources in **Egypt River** and the surrounding area.

6. Prepared by: MassDEP	Position/Title: Exercise Controller
ICS 201, Page 1	Date/Time: 12MAY2025

INCIDENT BRIEFING (ICS 201)

1. Incident Name: 2025 Essex/Ipswich/Rowley GRS EX	2. Incident Number: EIR-25	3. Date: 12MAY2025
--	--------------------------------------	------------------------------

7. Current and Planned Objectives:

Program Objective: Demonstrate the ability of local first responders to conduct initial response activities within the first 4-6 hours of an oil spill incident by deploying MassDEP oil spill response equipment and implementing common Geographic Response Strategy (GRS) tactics.

Exercise Objective: Complete test of DVO1b tactic as outlined in Egypt River GRS (NS06), ICS-201 Section 4, and Ops Brief, then, as time allows, conduct containment booming around a docked vessel.

Tidal Information (approx.) for Plum Island Sound, MA on 12MAY2025							
Egypt River, Rowley tide cycles approximately 40 minutes behind Plum Island Sound.							
High tide at GRS site expected around approximately 1:00pm							
HIGH				LOW			
AM	ft	PM	ft	AM	ft	PM	ft
-		12:19	8.0	6:16	0.5	6:22	1.5

Wind Speed	Wind Direction	Wind Average	Air Temp	Sky Condition
10-15 mph	SW	11 mph	72	Partly cloudy

8. Current and Planned Actions, Strategies, and Tactics:

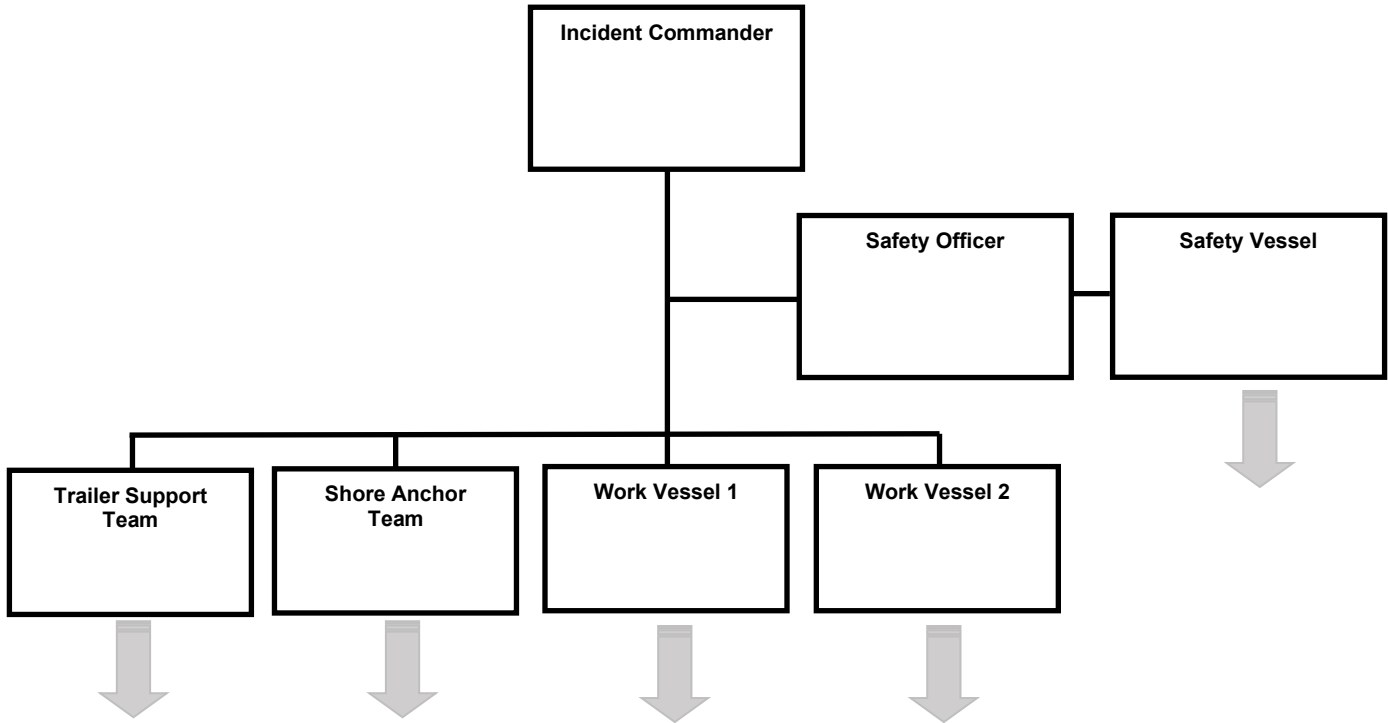
Time:	Actions:
0830	<u>All Personnel Mobilize and Stage Equipment:</u> Rowley Fire Station (473 Haverhill Street, Rowley)
0900	Intro, Sign-In, and Exercise Overview
0915	Classroom Session
1015	Trailer Equipment Familiarization and Hands-on Training
1115	LUNCH
1145	<u>All Personnel Transit to Deployment Staging Location:</u> Town Launch Boat Ramp (101 Warehouse Lane, Rowley)
1200	Final Safety and Operational Brief
1215	Initiate Test of DVO1b Tactic (and containment booming around a docked Rowley HM vessel)
1345	Demobilize, Rinse, Repack Equipment
1415	Conduct Hot Wash
1430	Secure from Exercise

Prepared by: MassDEP	Position/Title: Exercise Controller
ICS 201, Page 2	Date/Time: 12MAY2025

INCIDENT BRIEFING (ICS 201)

1. Incident Name: 2025 Essex/Ipswich/Rowley GRS EX	2. Incident Number: EIR-25	3. Date: 12MAY2025
---	-------------------------------	-----------------------

9. Current Organization (fill in additional organization as appropriate):



6. Prepared by: MassDEP	Position/Title: Exercise Controller
ICS 201, Page 3	Date/Time: 12MAY2025

INCIDENT BRIEFING (ICS 201)

1. Incident Name: 2025 Essex/Ipswich/Rowley GRS EX	2. Incident Number: EIR-25	3. Date: 12MAY2025
10. Resource Summary:		
Resource:	Resource Identifier:	Notes (location/assignment/status):
Essex FD	Personnel	3
Essex HM	Personnel	3
Essex Police	Personnel	2-3 (Observer)
Ipswich FD	Personnel	6-8
Ipswich HM	Personnel	6-8
Rowley FD	Personnel	3-7 (3-4 will be on-duty)
Rowley HM	Personnel	3
Rowley Police	Personnel	3-4 (Observer)
Rowley Board of Selectmen	Personnel	TBD
Manchester HM	Personnel	2 (Observer)
USCG	Personnel	TBD
MassDEP/MassDEP NERO	Personnel	2-4
Nuka Research	Personnel	2
MER	Personnel	3
19 ft Ribcraft center console	Vessel	Ipswich FD – can stage at Perley’s Marina if desired
25 ft Safeboat	Vessel	Ipswich HM – can stage at Perley’s Marina if desired
Exact vessel TBD	Vessel	Rowley HM (3 vessels on site)
Boom Rinse	Support	Hydrant on site
Radios	Support	Channel TBD
Drone Team and Mobile EOC	Support	Ipswich HM – also providing dispatching equipment
MassDEP Trailer – Ipswich	Response Equipment	On-water deployment – can bring directly to Perley’s Marina for staging
MassDEP Trailer – Rowley	Response Equipment	Trailer training
6. Prepared by: MassDEP		Position/Title: Exercise Controller
ICS 201, Page 4		Date/Time: 12MAY2025

SAFETY MESSAGE/PLAN (ICS 208)

KNOWN SAFETY HAZARDS:

- **Lines under tension** Boom towing and shoreside anchoring.
- **Pinch points** Connecting boom, boom towing, vessel operations.
- **Heavy lifting** Boom and anchors - observe safe lifting practices.
- **Entanglement** - Working around lines, anchors, and boom during shoreside and on-water deployment operations. Do not stand in the bight of lines or where boom is flaked out for deployment.
- **Loose clothing and jewelry** - Refrain from wearing loose clothing that may snag or become entangled on equipment. Jewelry including necklaces and rings should be removed.
- **Slips, trips, and falls** - Exercise caution in wet, muddy, and rocky areas and when working on piers, docks, or boat ramps near water. When working in, on, or near equipment trailers during boom retrieval and deployment, special precautions must be taken to avoid injury. For example, caution tape (provided in each trailer) should be tied to trailer ramp cables to mark their location.
- **Crushing injuries** - Exercise caution when working with anchors, while driving shoreside stakes with sledge or slide hammers, and when working alongside other vessels to avoid crushing injuries.
- **Vessel Operations** - Exercise caution when working near other vessels in boom deployment, towing, and rigging operations. Use caution when working near outboard motors and propellers.
- **Flotsam and debris** - Exercise Safety Officers shall conduct shoreside walkdowns to identify and remove dangerous objects (glass, sharp materials, or debris washed up on shore) that may endanger participants and/or impede exercise activities. Medical waste should only be retrieved by on-scene medical personnel. Flotsam should only be removed if it can be done safely and only if it impedes exercise activities.
- **Hypothermia** - Dependent on water temperature. If a participant is immersed in water, extricate safely and quickly, and treat them as appropriate.
- **Heat Stress/Stroke** - Dependent upon air temperature and humidity. Exposure may put participants at risk for heat stress, which can result in heat stroke, heat exhaustion, heat cramps, or rashes. Participants exhibiting heat stress symptoms must be treated immediately.

SPECIFIC PRECAUTIONS:

- An Exercise Safety Officer will be identified and responsible for all participant safety.
- First-Aid equipment should be made available. EMTs/Paramedics will be available on-scene.
- Personal Flotation Devices (PFDs) are required for all vessel crews and all shoreside personnel working along shorelines, boat ramps, and piers.
- All working personnel shall wear the appropriate foot gear during operations (waders, steel-toe boots)
- Sufficient personnel shall engage in loading and unloading boom from trailers to prevent injury.
- Hearing protection should be worn when working around generators and air compressors.
- Vessel operators shall conduct a safety brief with passengers to review vessel-specific safety precautions.
- An on-vessel spotter shall be assigned to provide guidance to the vessel operator.
- Utilize fenders when mooring alongside piers/docks and when rafting with other vessels.
- Person overboard - vessel spotter must maintain constant visual contact with the person overboard and provide position and direction assistance to the vessel operator. "Emergency" phrases must be communicated to all exercise participants via radio. Incident Commander will halt all exercise activity.
- Vessel load balancing - Each vessel operator must ensure that personnel and equipment are stationed and distributed appropriately on deck.
- Vessel occupancy – Vessel operators must adhere to the vessel's occupancy limits to avoid overloading.
- Hydration – Participants should ensure they remain properly hydrated throughout the exercise, especially in extreme heat situations. Water will be provided.
- Sunscreen – Participants should ensure proper sunscreen application based on weather conditions.

3. Prepared by: MassDEP

Position/Title: Exercise Controller

ICS 208, Page 1

Date: 12MAY2025