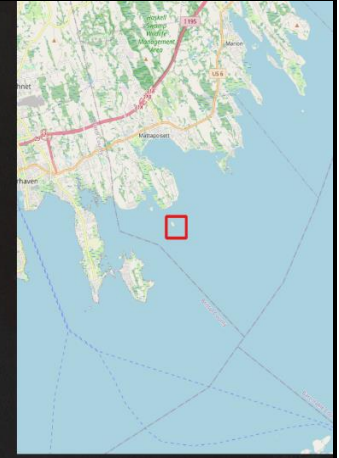
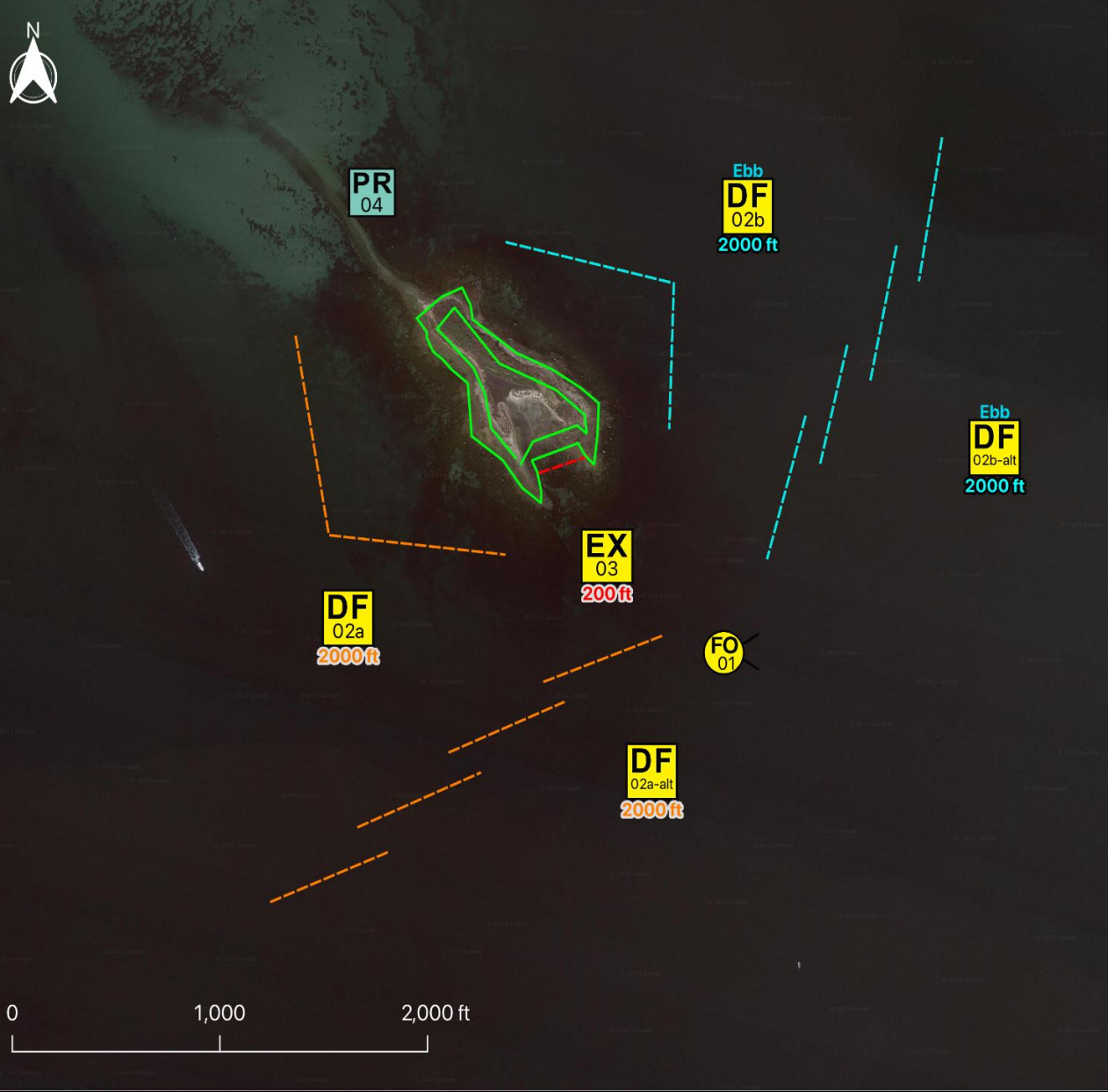


Tactics Legend

- DF** Deflection Booming
- DV** Diversion Booming
- EX** Exclusion Booming
- FO** Free Oil Recovery
- PR** Passive Recovery
- SR** Shoreside Recovery
- S** Staging Area
-  Boat Ramp
- BB** Beach Berm
- TG** Tide Gate
-  Protected-Water Boom
-  Open-Water Boom
-  Snare/ Sorbent Boom



Equipment - All Tactics

Boom(ft)	8200
Marine anchors	41
Shore anchors	2
Sorbent Boom(ft)	1200
FO Recovery Sys	1
Shore Responders	2
Boat Responders	9
Boats	3

Response Trailer, Tactics Deployment, and Responder Safety Information

A total of **9** state response trailers are required to implement all the tactics in this GRS. Responders should always consider on-scene conditions before deploying GRP tactics. Tactics may not be safe or effective under certain conditions. Responder safety should always be the first priority.

Location








**Latitude:** 41°36'59" N  
**Longitude:** 70°48'5" W  
**NOAA Chart #** 13230

Version

12/31/2025

# Geographic Response Strategy

Ram Island BB15

Tactic #	Purpose	Response Equipment	Deployment Resources	Deployment Notes
<b>FO-01</b> 	Contain and recover spilled oil on the water in the offshore & nearshore environment	1 or more onwater skimming systems		Deploy on-water recovery task force(s) in configuration suitable for types of vessels used and sea conditions, with skimming system(s) and temporary storage for recovered oil and water. Location not exact, will move to chase oil.
		N/A	Testing Date	
<b>DF-02a</b> 	Direct spilled oil away from a location to be protected or to change the course of the slick.	2000 ft open water boom 10 marine anchor system 0 shoreline anchor system	0 shore responders 2 response boats 6 boat responders	Tend through tidal changes. Deploy boom as depicted to deflect incoming oil away from sensitive areas. Anchor every 200-300'. Readjust boom angle as needed to reduce entrainment 36" boom staged in New Bedford and MMA. 42" boom staged at USCG Base Cape Cod. Contact MassDEP to access.
		10/22/15	Testing Date	
<b>DF-02a-alt</b> 	Direct spilled oil away from a location to be protected or to change the course of the slick.	2000 ft open water boom 10 marine anchor system 0 shoreline anchor system	0 shore responders 2 response boats 6 boat responders	Tend through tidal changes. Deploy boom as depicted to deflect incoming oil away from sensitive areas. Anchor every 200-300'. 36" boom staged in New Bedford and MMA. 42" boom staged at USCG Base Cape Cod. Contact MassDEP to access.
			Testing Date	
<b>DF-02b</b> 	Direct spilled oil away from a location to be protected or to change the course of the slick.	2000 ft open water boom 10 marine anchor system 0 shoreline anchor system	0 shore responders 2 response boats 6 boat responders	Tend through tidal changes. Deploy boom as depicted to deflect incoming oil away from sensitive areas. Anchor every 200-300'. Alternate deployment with tide - reset during slack. Readjust boom angle as needed to reduce entrainment 36" boom staged in New Bedford and MMA. 42" boom staged at USCG Base Cape Cod. Contact MassDEP to access.
			Testing Date	
<b>DF-02b-alt</b> 	Direct spilled oil away from a location to be protected or to change the course of the slick.	2000 ft open water boom 10 marine anchor system 0 shoreline anchor system	0 shore responders 2 response boats 6 boat responders	Tend through tidal changes. Deploy boom as depicted to deflect incoming oil away from sensitive areas. Anchor every 200-300'. Alternate deployment with tide - reset during slack. 36" boom staged in New Bedford and MMA. 42" boom staged at USCG Base Cape Cod. Contact MassDEP to access.
			Testing Date	
<b>EX-03</b> 	Prohibit oil slicks from entering a sensitive area	200 ft protected water boom 1 marine anchor system 2 shoreline anchor system	2 shore responders 1 response boats 3 boat responders	Tend through tidal changes. Deploy boom as depicted to exclude oil from sensitive areas. Anchor every 200-300'. Not tide dependent. Deploy shoreside anchor first.
			Testing Date	
<b>PR-04</b> 	Remove spilled oil by collecting it in a sorbent material	1200 ft sorbent boom 1200 ft sorbent pom-poms 34 anchor stakes	2 shore responders	Place and stake snare or sorbent boom in areas that are likely to pool and collect oil and across the mouths of the streams and intertidal areas. Use snare boom for persistent oils and sorbent boom for non-persistent oils. Approach the streams and intertidal areas on rising tide. Replace as necessary to maximize oil recovery.
		N/A	Testing Date	

**Local contacts**

Mattapoissett Fire Dept.	<a href="tel:5087584150">(508) 758-4150</a>
Mattapoissett Harbor Master	<a href="tel:5087584191">(508) 758-4191</a>
Marion Harbor Master	<a href="tel:5087483535">(508) 748-3535</a>
Marion Fire Department	<a href="tel:5087481177">(508) 748-1177</a>
Mass. DEP (24 Hours)	<a href="tel:8883041133">888-304-1133</a>
Mass. Division of Fisheries and Wildlife	<a href="tel:5087593406">(508) 759-3406</a>
Massachusetts Audubon IBA Program	<a href="tel:7812599500">(781) 259-9500</a>
The Coalition for Buzzards Bay	<a href="tel:5089996363">(508) 999-6363</a>
USCG Sector Southeastern New England	<a href="tel:5014573211">(501) 457-3211</a>



*Ram Island shoreline at low tide looking west on 08 Sep 2004.*

**Resources Protected**

Marine Mammals	None identified
Fish	Shellfish, finfish
Invertebrates	None identified
Birds	Waterfowl concentration, Roseate Tern (state/federally endangered)
Threat/End. Species	None identified
Cultural	None identified
Subsistence	None identified
Human Use	Aquaculture site SW of island
Commercial Fishing	None identified
Land Management	None identified
Coastal Habitat	Extensive tidal flat and eel grass beds, sand and cobble beaches

**Special Considerations & Navigational Hazards**

Managed nesting breeding staging site for Roseate Terns. Spring: Nesting/breeding. Mid-July thru Mid-Sep: Staging prior to migration. Waters around Ram Island are shallow and rocky. Use extreme caution when operating a vessel around and near the island.